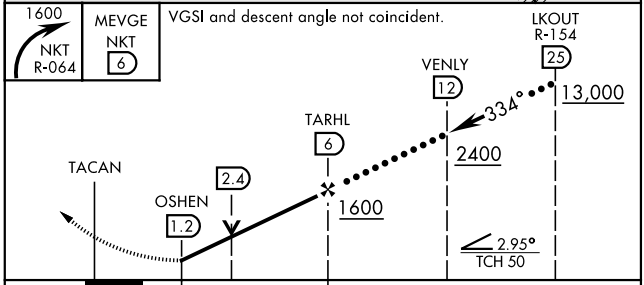
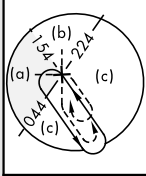
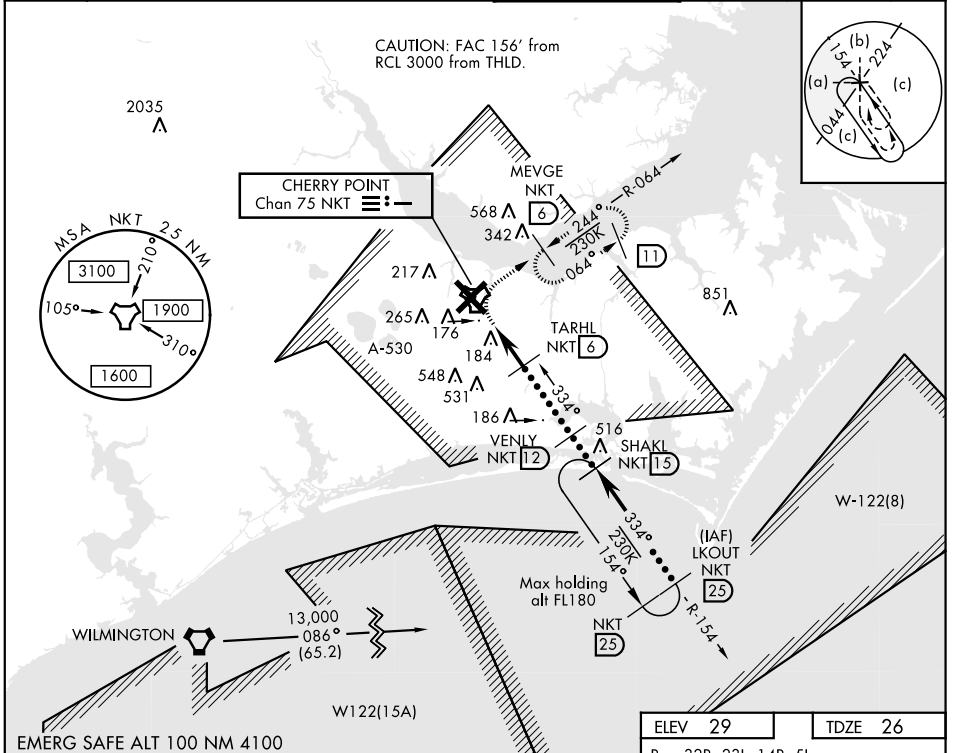


TACAN NKT Chan 75	APCH CRS 334°	Rwy ldg TDZE 26 Arpt Elev 29	JAL-471 [USN]	CHERRY POINT MCAS (CUNNINGHAM FLD) (KNKT)
--------------------------	----------------------	---	---------------	---

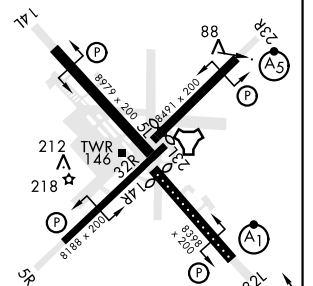
▼ * When ALS inop, increase CAT CDE vis to 1 1/2 miles. **ALSF-1**
 ** Circling to land Rwy 5L NA at night.

ATIS 127.475 244.875	CHERRY POINT APP CON (E) 124.1 268.7 (abv 2600') (E) 132.575 299.6 (at/blw 2600') (W) 119.35 377.175 (N) 119.75 360.775	CHERRY POINT TOWER 121.3 340.2	GND CON 128.625 239.025	CLNC DEL 125.95 316.125	ASR/PAR
--	---	--	---	---	---------



ELEV 29	TDZE 26
---------	---------

Rwy 32R, 23L, 14R, 5L marked in center mat area.



HIRL all Rwy
 REIL Rwy 5L and 14R
 Rwy 5L-23R ldg 7553',
 14R-32L ldg 7551'

SE-2, 16 JUL 2020 to 13 AUG 2020

SE-2, 16 JUL 2020 to 13 AUG 2020