

TACAN NKT Chan 75	APCH CRS 334°	Rwy ldg TDZE 26 Arprt Elev 29
-----------------------------	-------------------------	---

JAL-471 [USN]

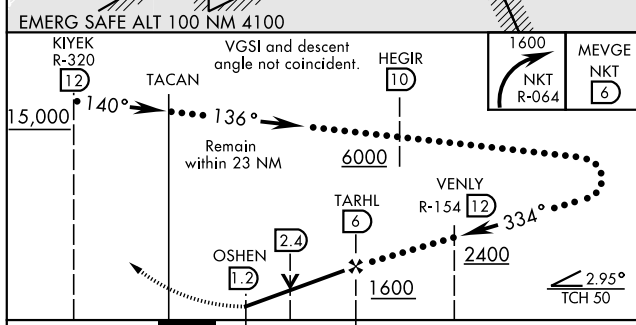
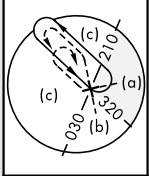
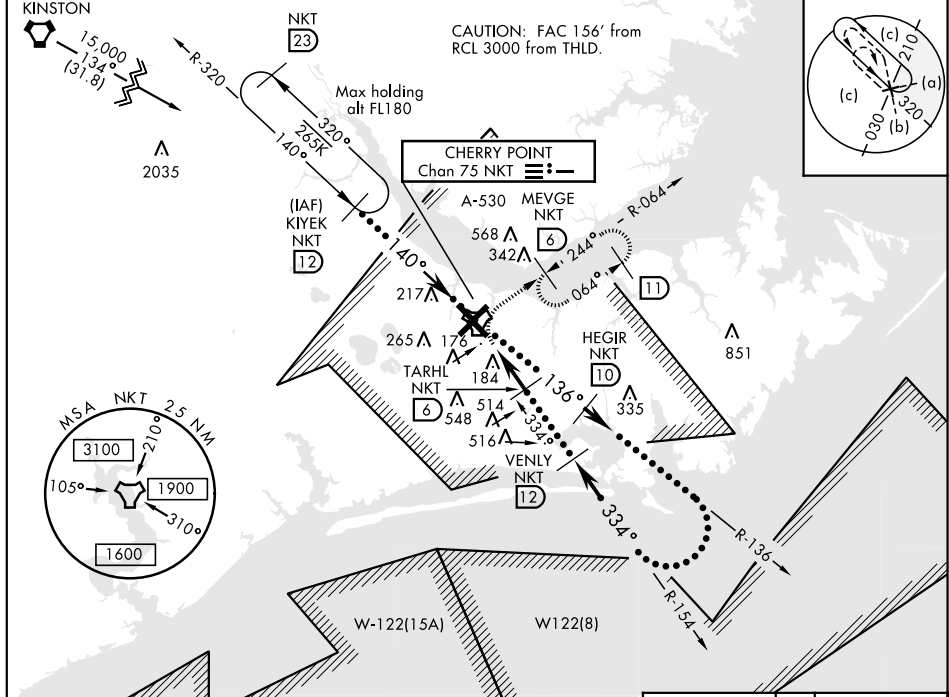
CERRY POINT MCAS (CUNNINGHAM FLD) (KNKT)

∇ * When ALS inop, increase vis CAT CDE to 1 3/8 miles.
 ** Circling to land Rwy 5L NA at night.

ALSF-1

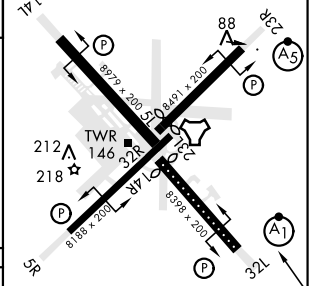
MISSED APPROACH: Climbing right turn to 1600
direct MEVGE and hold.

ATIS 127.475 244.875	(E) 124.1 268.7 (abv 2600') (E) 132.575 299.6 (at/blw 2600') (W) 119.35 377.175 (N) 119.75 360.775	CHERRY POINT TOWER 121.3 340.2	GND CON 128.625 239.025	CLNC DEL 125.95 316.125	ASR/ PAR
--	--	---	---	---	-------------



ELEV	29	TDZE	26
------	----	------	----

Rwy 32R, 23L, 14R, 5L marked in center mat area.



CATEGORY	C	D	E
S-32L *	480-7/8	454 (500-7/8)	
** CIRCLING	600-1 1/2 571 (600-1 1/2)	600-2 571 (600-2)	700-2 1/2 671 (700-2 1/2)

HIRL all Rwy
REIL Rwy 5L and 14R
Rwy 5L-23R ldg 7553',
14R-32L ldg 7551'

SE-2, 16 JUL 2020 to 13 AUG 2020

SE-2, 16 JUL 2020 to 13 AUG 2020