

CHERRY POINT, NORTH CAROLINA

ILS or LOC/DME RWY 23R

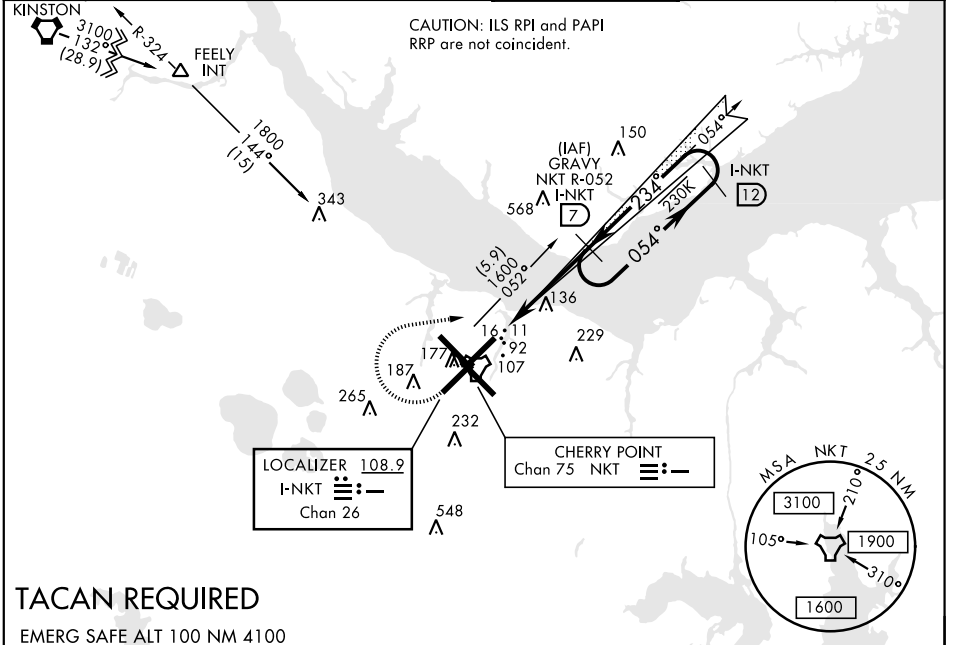
LOC/DME I-NKT 108.9 Chan 26	APCH CRS 234°	Rwy ldg 7553 TDZE 23 Arprt Elev 29	AL-471 [USN]	CHERRY POINT MCAS (CUNNINGHAM FLD) (KNKT)
---	-------------------------	---	--------------	---

▼ * When ALS inop, increase CAT ABCD vis to 3/4 mile.
 ** When ALS inop, increase CAT ABCD vis to 1 mile.

MALS R (A5)

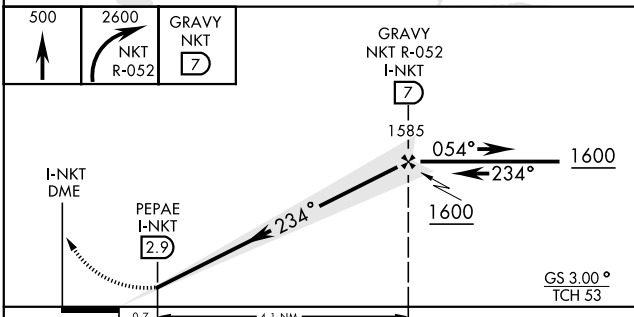
MISSED APPROACH: Climb to 500, then climbing right turn to 2600 via NKT TACAN R-052 to GRAYV and hold.

ATIS 127.475 244.875	CHERRY POINT APP CON (E) 124.1 268.7 (abv 2600') (E) 132.575 299.6 (at/blw 2600') (W) 119.35 377.175 (N) 119.75 360.775	CHERRY POINT TOWER 121.3 340.2	GND CON 128.625 239.025	CLNC DEL 125.95 316.125	ASR/PAR
--	---	--	---	---	---------

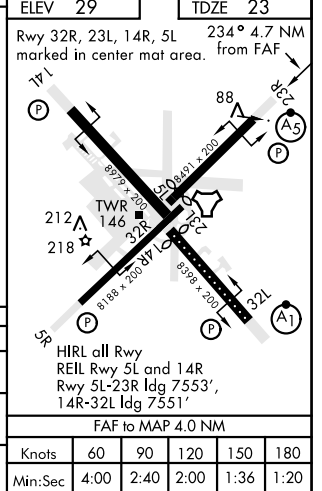


TACAN REQUIRED

EMERG SAFE ALT 100 NM 4100



CATEGORY	A	B	C	D
S-ILS 23R*	223-1/2		200	(200-1/2)
S-LOC 23R**	400-1/2	377 (400-1/2)	400-5/8	377 (400-5/8)
C CIRCLING	540-1	511 (600-1)	600-1 1/2 571 (600-1 1/2)	600-2 571 (600-2)



CHERRY POINT, NORTH CAROLINA 34° 54' N-76° 53' W CHERRY POINT MCAS (CUNNINGHAM FLD) (KNKT)

Amtd 3 09NOV17

ILS or LOC/DME RWY 23R

SE-2, 16 JUL 2020 to 13 AUG 2020

SE-2, 16 JUL 2020 to 13 AUG 2020