

CHERRY POINT, NORTH CAROLINA

# RNAV (GPS) RWY 14L

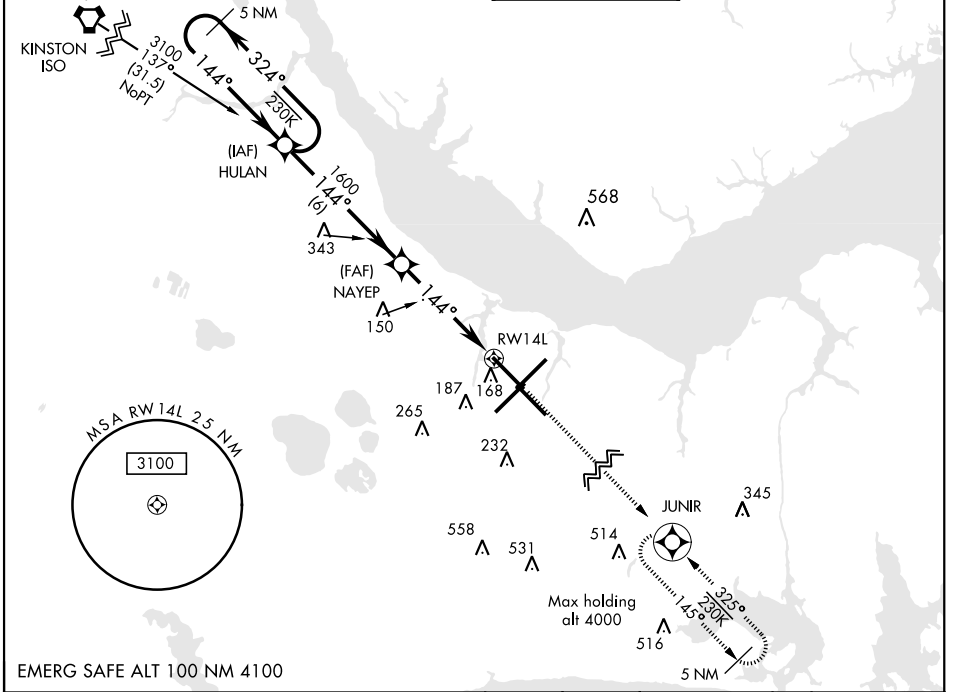
WAAS Chan <b>41117</b> <b>W14A</b>	APCH CRS <b>144°</b>	Rwy ldg TDZE Arpt Elev <b>8979</b> <b>26</b> <b>29</b>
--	-------------------------	---

AL-471 [USN] CHERRY POINT MCAS (CUNNINGHAM FLD) (KNKT)

▼ For uncompensated Baro-VNAV systems, LNAV/VNAV NA below -15°C (5°F) or above 53°C (128°F). DME/DME RNP-0.3 NA.

MISSED APPROACH: Climb to 3100 direct JUNIR and hold.

ATIS <b>127.475</b> <b>244.875</b>	CHERRY POINT APP CON (E) <b>124.1 268.7</b> (abv 2600') (E) <b>132.575 299.6</b> (at/blw 2600') (W) <b>119.35 377.175</b> (N) <b>119.75 360.775</b>	CHERRY POINT TOWER <b>121.3 340.2</b>	GND CON <b>128.625</b> <b>239.025</b>	CLNC DEL <b>125.95</b> <b>316.125</b>	ASR/ PAR
--	--	--	---	---	-------------



SE-2, 16 JUL 2020 to 13 AUG 2020

SE-2, 16 JUL 2020 to 13 AUG 2020

EMERG SAFE ALT 100 NM 4100

VGSI and RNAV glidepath not coincident

3100	JUNIR	ELEV 29	TDZE 26
------	-------	---------	---------

Diagram showing the approach path from HULAN to NAYEP and then to RWY 14L. Key altitudes and distances are shown: 3100 at HULAN, 1600 at NAYEP, and 4.7 NM from NAYEP to RWY 14L. A 1.1 NM distance is also marked from NAYEP to RWY 14L. The diagram also shows the GP (Ground Profile) with a 3.04° TCH of 55 feet.

CATEGORY	A	B	C	D
LPV DA	226- <sup>3</sup> / <sub>4</sub>		200 (200- <sup>3</sup> / <sub>4</sub> )	
LNAV/VNAV DA	300- <sup>7</sup> / <sub>8</sub> 274 (300- <sup>7</sup> / <sub>8</sub> )	311- <sup>7</sup> / <sub>8</sub> 285 (300- <sup>7</sup> / <sub>8</sub> )	319- <sup>7</sup> / <sub>8</sub> 293 (300- <sup>7</sup> / <sub>8</sub> )	330-1 304 (400-1)
LNAV MDA	440-1	414 (500-1)	440-1 <sup>1</sup> / <sub>8</sub>	414 (500-1 <sup>1</sup> / <sub>8</sub> )
CIRCLING	540-1	511 (600-1)	600-1 <sup>1</sup> / <sub>2</sub> 571 (600-1 <sup>1</sup> / <sub>2</sub> )	600-2 571 (600-2)

Plan view diagram of the RWY 14L area showing runway layout, taxiways, and various obstructions (A, P, S). Key features include RWY 14L, RWY 32R, 23L, 14R, and 5L. Obstructions are marked with their MSL altitudes (e.g., 212, 218, 184, 85, 88, 362, 272, 278, 279, 280, 281, 282, 283, 284, 285, 286, 287, 288, 289, 290, 291, 292, 293, 294, 295, 296, 297, 298, 299, 300, 301, 302, 303, 304, 305, 306, 307, 308, 309, 310, 311, 312, 313, 314, 315, 316, 317, 318, 319, 320, 321, 322, 323, 324, 325, 326, 327, 328, 329, 330, 331, 332, 333, 334, 335, 336, 337, 338, 339, 340, 341, 342, 343, 344, 345, 346, 347, 348, 349, 350, 351, 352, 353, 354, 355, 356, 357, 358, 359, 360, 361, 362, 363, 364, 365, 366, 367, 368, 369, 370, 371, 372, 373, 374, 375, 376, 377, 378, 379, 380, 381, 382, 383, 384, 385, 386, 387, 388, 389, 390, 391, 392, 393, 394, 395, 396, 397, 398, 399, 400, 401, 402, 403, 404, 405, 406, 407, 408, 409, 410, 411, 412, 413, 414, 415, 416, 417, 418, 419, 420, 421, 422, 423, 424, 425, 426, 427, 428, 429, 430, 431, 432, 433, 434, 435, 436, 437, 438, 439, 440, 441, 442, 443, 444, 445, 446, 447, 448, 449, 450, 451, 452, 453, 454, 455, 456, 457, 458, 459, 460, 461, 462, 463, 464, 465, 466, 467, 468, 469, 470, 471, 472, 473, 474, 475, 476, 477, 478, 479, 480, 481, 482, 483, 484, 485, 486, 487, 488, 489, 490, 491, 492, 493, 494, 495, 496, 497, 498, 499, 500, 501, 502, 503, 504, 505, 506, 507, 508, 509, 510, 511, 512, 513, 514, 515, 516, 517, 518, 519, 520, 521, 522, 523, 524, 525, 526, 527, 528, 529, 530, 531, 532, 533, 534, 535, 536, 537, 538, 539, 540, 541, 542, 543, 544, 545, 546, 547, 548, 549, 550, 551, 552, 553, 554, 555, 556, 557, 558, 559, 560, 561, 562, 563, 564, 565, 566, 567, 568, 569, 570, 571, 572, 573, 574, 575, 576, 577, 578, 579, 580, 581, 582, 583, 584, 585, 586, 587, 588, 589, 590, 591, 592, 593, 594, 595, 596, 597, 598, 599, 600, 601, 602, 603, 604, 605, 606, 607, 608, 609, 610, 611, 612, 613, 614, 615, 616, 617, 618, 619, 620, 621, 622, 623, 624, 625, 626, 627, 628, 629, 630, 631, 632, 633, 634, 635, 636, 637, 638, 639, 640, 641, 642, 643, 644, 645, 646, 647, 648, 649, 650, 651, 652, 653, 654, 655, 656, 657, 658, 659, 660, 661, 662, 663, 664, 665, 666, 667, 668, 669, 670, 671, 672, 673, 674, 675, 676, 677, 678, 679, 680, 681, 682, 683, 684, 685, 686, 687, 688, 689, 690, 691, 692, 693, 694, 695, 696, 697, 698, 699, 700, 701, 702, 703, 704, 705, 706, 707, 708, 709, 710, 711, 712, 713, 714, 715, 716, 717, 718, 719, 720, 721, 722, 723, 724, 725, 726, 727, 728, 729, 730, 731, 732, 733, 734, 735, 736, 737, 738, 739, 740, 741, 742, 743, 744, 745, 746, 747, 748, 749, 750, 751, 752, 753, 754, 755, 756, 757, 758, 759, 760, 761, 762, 763, 764, 765, 766, 767, 768, 769, 770, 771, 772, 773, 774, 775, 776, 777, 778, 779, 780, 781, 782, 783, 784, 785, 786, 787, 788, 789, 790, 791, 792, 793, 794, 795, 796, 797, 798, 799, 800, 801, 802, 803, 804, 805, 806, 807, 808, 809, 810, 811, 812, 813, 814, 815, 816, 817, 818, 819, 820, 821, 822, 823, 824, 825, 826, 827, 828, 829, 830, 831, 832, 833, 834, 835, 836, 837, 838, 839, 840, 841, 842, 843, 844, 845, 846, 847, 848, 849, 850, 851, 852, 853, 854, 855, 856, 857, 858, 859, 860, 861, 862, 863, 864, 865, 866, 867, 868, 869, 870, 871, 872, 873, 874, 875, 876, 877, 878, 879, 880, 881, 882, 883, 884, 885, 886, 887, 888, 889, 890, 891, 892, 893, 894, 895, 896, 897, 898, 899, 900, 901, 902, 903, 904, 905, 906, 907, 908, 909, 910, 911, 912, 913, 914, 915, 916, 917, 918, 919, 920, 921, 922, 923, 924, 925, 926, 927, 928, 929, 930, 931, 932, 933, 934, 935, 936, 937, 938, 939, 940, 941, 942, 943, 944, 945, 946, 947, 948, 949, 950, 951, 952, 953, 954, 955, 956, 957, 958, 959, 960, 961, 962, 963, 964, 965, 966, 967, 968, 969, 970, 971, 972, 973, 974, 975, 976, 977, 978, 979, 980, 981, 982, 983, 984, 985, 986, 987, 988, 989, 990, 991, 992, 993, 994, 995, 996, 997, 998, 999, 1000).

HIRL all Rwy  
REIL Rwy 5L and 14R  
Rwy 5L-23R ldg 7553'  
Rwy 14R-32L ldg 7551'

CHERRY POINT, NORTH CAROLINA

34° 54'N-76° 53'W

CHERRY POINT MCAS (CUNNINGHAM FLD) (KNKT)

Amdt 2 09NOV17

# RNAV (GPS) RWY 14L