

RNAV (GPS) RWY 23R

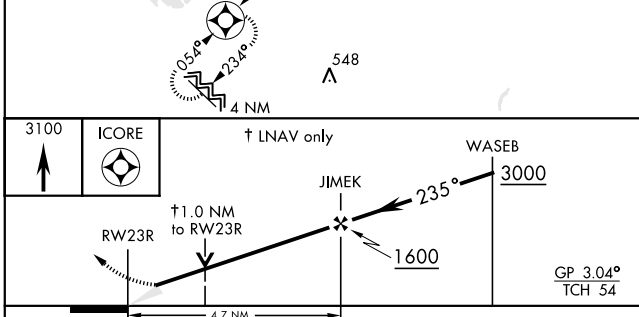
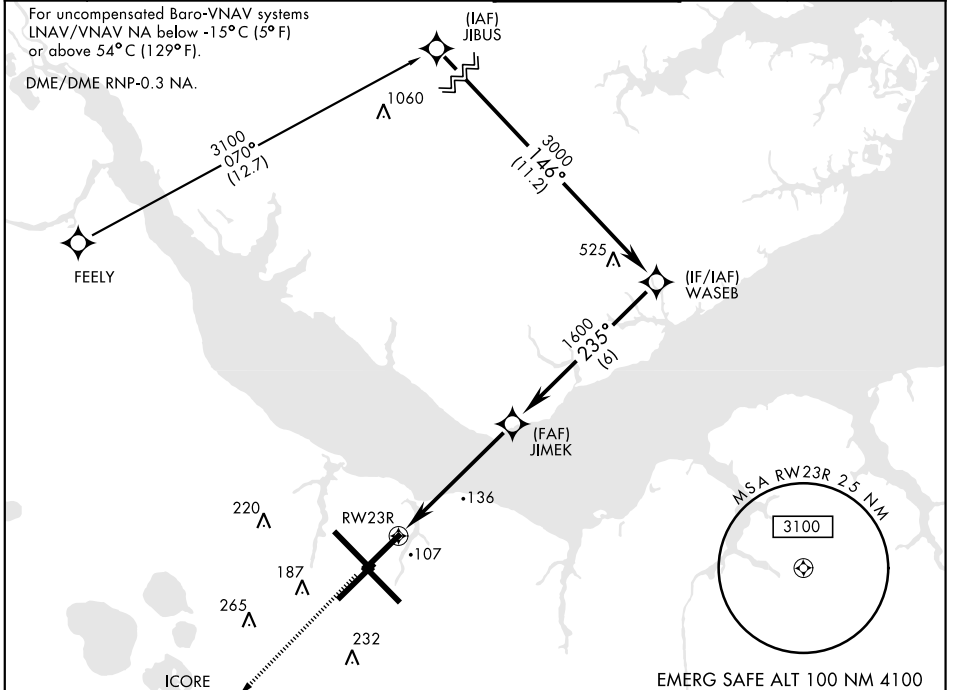
APCH CRS	Rwy ldg	7553
235°	TDZE	23
	Arprt Elev	29

AL-471 [USN] CHERRY POINT MCAS (CUNNINGHAM FLD) (KNKT)

▼ * When ALS inop, increase CAT ABCD vis to ¾ mile.
** When ALS inop, increase CAT ABCD to 1 mile.

MALSR 	Missed Approach: Climb to 3100 direct ICORE and hold. Continue climb in hold to 3100.
-----------	---

ATIS	CHERRY POINT APP CON	CHERRY POINT TOWER	GND CON	CLNC DEL	ASR/PAR
127.475	(E) 124.1 268.7 (abv 2600')	121.3 340.2	128.625	125.95	
244.875	(W) 119.35 377.175 (N) 119.75 360.775		239.025	316.125	



CATEGORY	A	B	C	D
LNAV/VNAV DA*	273-½	250	(300-½)	278-½ 255 (300-½)
LNAV MDA**	400-½	377 (400-½)	400-5/8	377 (400-5/8)
Ⓢ CIRCLING	540-1	511 (600-1)	600-1½ 571 (600-1½)	600-2 571 (600-2)

EMERG SAFE ALT 100 NM 4100

ELEV 29	TDZE 23
---------	---------

Rwy 32R, 23L, 14R, 5L
marked in center mat area.

235° to RWY 23R

TWR 146

HIRL all Rwy
REIL Rwy 5L and 14R
Rwy 5L-23R ldg 7553',
14R-32L ldg 7551'

RNAV (GPS) RWY 23R

SE-2, 16 JUL 2020 to 13 AUG 2020

SE-2, 16 JUL 2020 to 13 AUG 2020