

CHERRY POINT, NORTH CAROLINA

# RNAV (GPS) RWY 32L

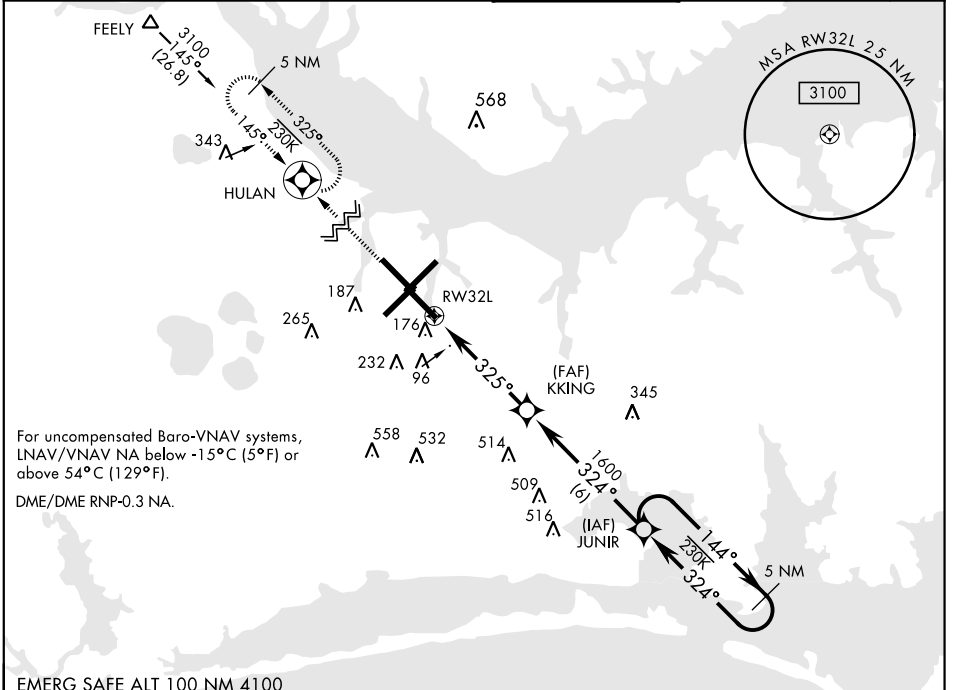
WAAS Chan <b>54304</b> <b>W32A</b>	APCH CRS <b>325°</b>	Rwy ldg TDZE Arprt Elev	<b>7551</b> <b>26</b> <b>29</b>
--	-------------------------	-------------------------------	---------------------------------------

AL-471 [USN] CHERRY POINT MCAS (CUNNINGHAM FLD) (KNKT)

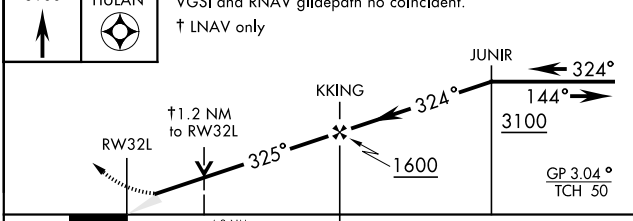
ALSF-1  
 MISSED APPROACH: Climb to 3100 direct HULAN and hold.

\*When ALS inop, increase CAT ABCD vis to ¾ mile.  
 \*\*When ALS inop, increase CAT ABCD vis to 1 ¼ mile.  
 \*\*\*When ALS inop, increase CAT AB vis to 1 mile, CAT CD vis to 1 ¾ miles.

ATIS <b>127.475</b> <b>244.875</b>	CHERRY POINT APP CON (E) <b>124.1 268.7</b> (abv 2600') (E) <b>132.575 299.6</b> (at/blw 2600') (W) <b>119.35 377.175</b> (N) <b>119.75 360.775</b>	CHERRY POINT TOWER <b>121.3 340.2</b>	GND CON <b>128.625</b> <b>239.025</b>	CLNC DEL <b>125.95</b> <b>316.125</b>	ASR/ PAR
--	--	--	---	---	-------------

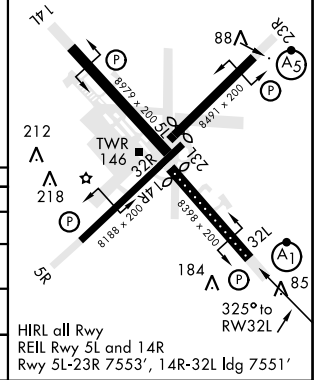


EMERG SAFE ALT 100 NM 4100



ELEV 29	TDZE 26
---------	---------

Rwy 32R, 23L, 14R, 5L marked in center mat area.



CATEGORY	A	B	C	D
LPV DA*	226-½		200	(200-½)
LNAV/ VNAV DA**	406-¾		380	(400-¾)
LNAV MDA***	480-½	454 (500-½)	480-¾	454 (500-¾)
CIRCLING	540-1	511 (600-1)	600-1½ 571 (600-1½)	600-2 571 (600-2)

HIRL all Rwy  
 REIL Rwy 5L and 14R  
 Rwy 5L-23R 7553', 14R-32L ldg 7551'

CHERRY POINT, NORTH CAROLINA 34°54'N-76°53'W CHERRY POINT MCAS (CUNNINGHAM FLD) (KNKT)

Amtd 6 09NOV17

# RNAV (GPS) RWY 32L

SE-2, 16 JUL 2020 to 13 AUG 2020

SE-2, 16 JUL 2020 to 13 AUG 2020