

RNAV (GPS) RWY 5R

WAAS Chan 71199 W05A	APCH CRS 054°	Rwy Idg TDZE Arprt Elev	8188 27 29
--	-------------------------	-------------------------------	---------------------------------------

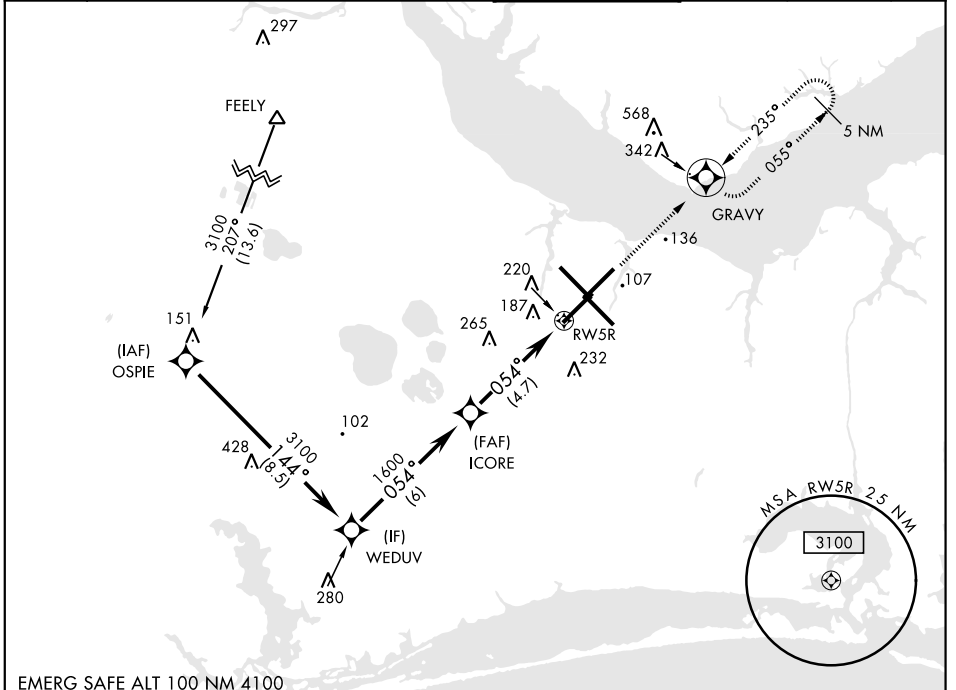
AL-471 [USN]

CHERRY POINT MCAS (CUNNINGHAM FLD) (KNKT)

▼ For uncompensated Baro-VNAV systems, LNAV/VNAV NA below -15°C (5°F) or above 52°C (126°F). DME/DME RNP-0.3 NA.

MISSED APPROACH: Climb to 3100 direct GRAVY and hold. Continue climb in hold to 3100.

ATIS 127.475 244.875	CHERRY POINT APP CON (E) 124.1 268.7 (abv 2600') (E) 132.575 299.6 (at/blw 2600') (W) 119.35 377.175 (N) 119.75 360.775	CHERRY POINT TOWER 121.3 340.2	GND CON 128.625 239.025	CLNC DEL 125.95 316.125	ASR/PAR
--	--	--	---	---	---------



SE-2, 16 JUL 2020 to 13 AUG 2020

SE-2, 16 JUL 2020 to 13 AUG 2020

EMERG SAFE ALT 100 NM 4100

VGSI and RNAV glidepath not coincident.

ELEV	29	TDZE	27
------	----	------	----

Rwy 32R, 23L, 14R, 5L marked in center mat area.

CATEGORY	A	B	C	D
LPV DA	227- $\frac{3}{4}$		200 (200- $\frac{3}{4}$)	
LNAV/VNAV DA	367-1 $\frac{1}{8}$ 340 (400-1 $\frac{1}{8}$)	378-1 $\frac{1}{8}$ 351 (400-1 $\frac{1}{8}$)	386-1 $\frac{1}{8}$ 359 (400-1 $\frac{1}{8}$)	397-1 $\frac{1}{4}$ 370 (400-1 $\frac{1}{4}$)
LNAV MDA	500-1	473 (500-1)	500-1 $\frac{3}{8}$	473 (500-1 $\frac{3}{8}$)
CIRCLING	540-1	511 (600-1)	600-1 $\frac{1}{2}$ 571 (600-1 $\frac{1}{2}$)	600-2 571 (600-2)

HIRL all Rwy
REL Rwy 5L and 14R
Rwy 5L-23R Idg 7553',
14R-32L Idg 7551'

RNAV (GPS) RWY 5R