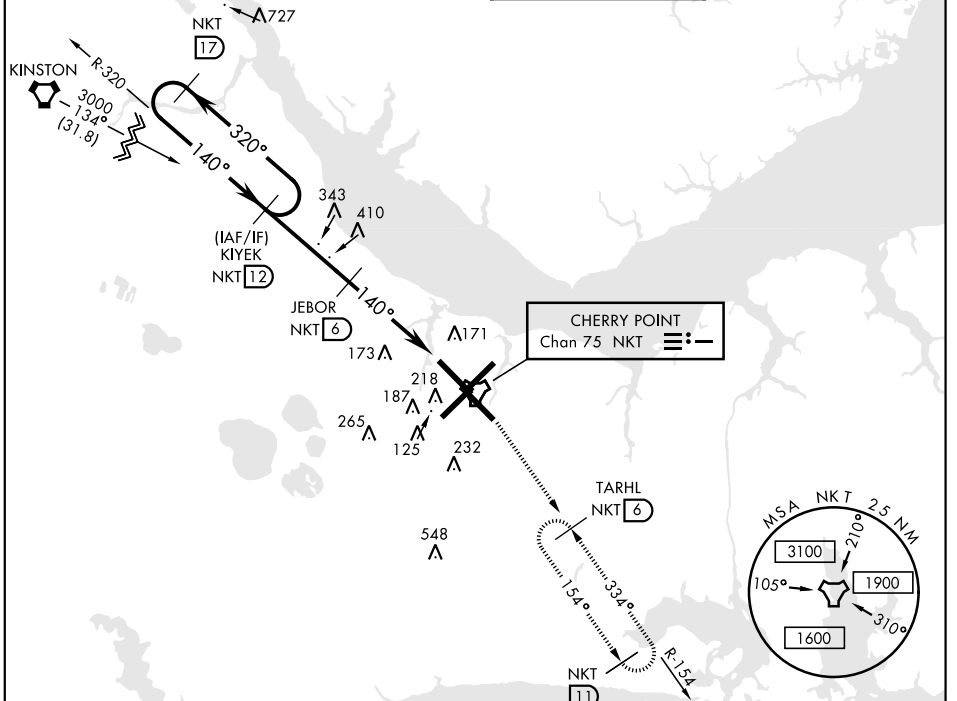


TACAN RWY 14L

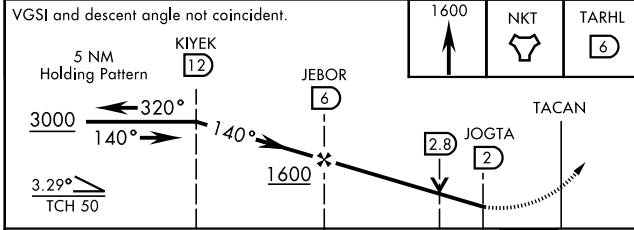
TACAN NKT Chan 75	APCH CRS 140°	Rwy ldg TDZE 8979 Arprt Elev 26 29	AL-471 [USN] CHERRY POINT MCAS (CUNNINGHAM FLD) (KNKT)
-----------------------------	-------------------------	--	--

MISSED APPROACH: Climb to 1600 direct NKT TACAN, then direct TARHL and hold.

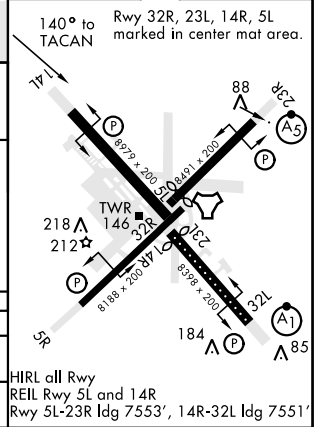
ATIS 127.475 244.875	(E) 124.1 (E) 132.575 (W) 119.35	CHERRY POINT APP CON 268.7 (abv 2600') 299.6 (at/blw 2600') 377.175 (N) 119.75 360.775	CHERRY POINT TOWER 121.3 340.2	GND CON 128.625 239.025	CLNC DEL 125.95 316.125	ASR/ PAR
--	---	---	--	---	---	-------------



EMERG SAFE ALT 100 NM 4100



ELEV 29	TDZE 26
---------	---------



CATEGORY	A	B	C	D
S-14L	460-1 434 (500-1)		460-1 1/4 434 (500-1 1/4)	
CIRCLING	540-1	511 (600-1)	600-1 1/2 571 (600-1 1/2)	600-2 571 (600-2)

HIRL all Rwy
REIL Rwy 5L and 14R
Rwy 5L-23R ldg 7553', 14R-32L ldg 7551'

TACAN RWY 14L

SE-2, 16 JUL 2020 to 13 AUG 2020

SE-2, 16 JUL 2020 to 13 AUG 2020