

CHERRY POINT, NORTH CAROLINA

TACAN RWY 32L

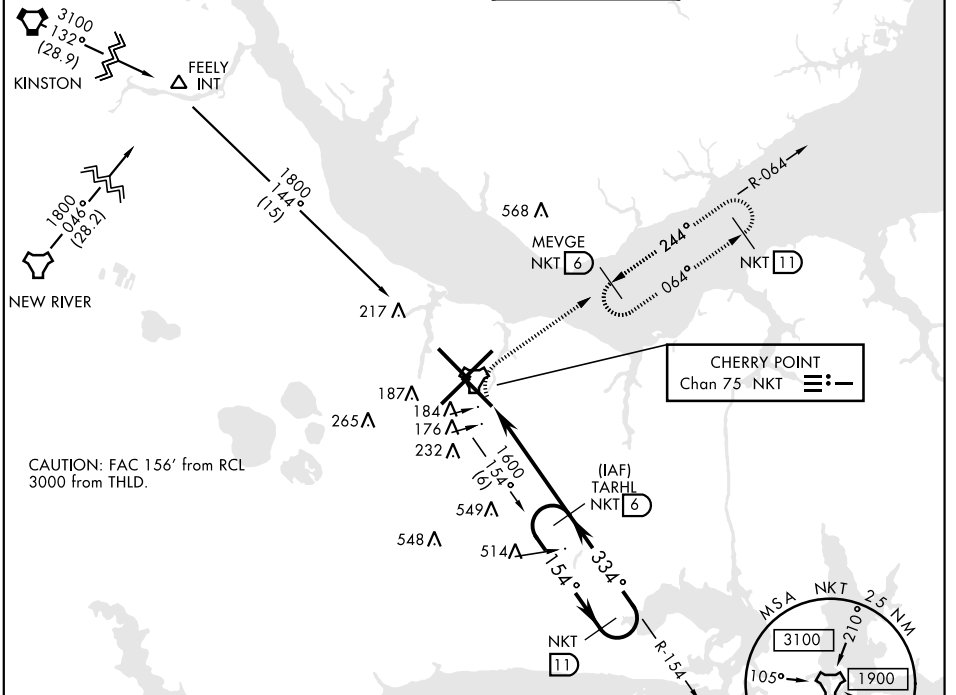
TACAN NKT Chan 75	APCH CRS 334°	Rwy ldg 7551 TDZE 26 Arprt Elev 29	AL-471 [USN]	CHERRY POINT MCAS (CUNNINGHAM FLD) (KNKT)
----------------------	------------------	---	--------------	---

▼ * When ALS inop, increase vis CAT AB to 1 mile, CAT CD to 1 3/8 miles.
 ** Circling to land Rwy 5L NA at night.



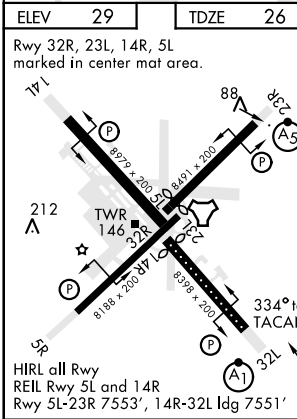
MISSED APPROACH: Climb on hdg 334°. At 500 climbing right turn to 1600 direct MEVGE and hold.

ATIS 127.475 244.875	CHERRY POINT APP CON (E) 124.1 268.7 (abv 2600') (E) 132.575 299.6 (at/blw 2600') (W) 119.35 377.175 (N) 119.75 360.775	CHERRY POINT TOWER 121.3 340.2	GND CON 128.625 239.025	CLNC DEL 125.95 316.125	ASR/ PAR
----------------------------	--	-----------------------------------	-------------------------------	-------------------------------	-------------



CAUTION: FAC 156' from RCL 3000 from THLD.

EMERG SAFE ALT 100 NM 4100



ELEV 29	TDZE 26			
Rwy 32R, 23L, 14R, 5L marked in center mat area.				
500	1600	MEVGE NKT 6		
↑ hdg 334°	↷			
TACAN	OSHEN 1.2	TARHL 6		
	334°	154°		
	1600	1600		
	4.8 NM	2.95° TCH 50		
CATEGORY	A	B	C	D
S-32L *	480-1/2	454 (500-1/2)	480-7/8 454 (500-7/8)	
** CIRCLING	540-1	511 (600-1)	600-1 1/2 571 (600-1 1/2)	600-2 571 (600-2)

CHERRY POINT, NORTH CAROLINA 34° 54'N-76° 53'W CHERRY POINT MCAS (CUNNINGHAM FLD) (KNKT)

Amtd 4 09NOV17

TACAN RWY 32L

SE-2, 16 JUL 2020 to 13 AUG 2020

SE-2, 16 JUL 2020 to 13 AUG 2020