


LOC I-CDR <b>110.9</b>	APP CRS <b>028°</b>	Rwy ldg <b>5211</b>
		TDZE <b>3294</b>
		Apt Elev <b>3298</b>

# ILS or LOC RWY 3

CHADRON MUNI (CDR)

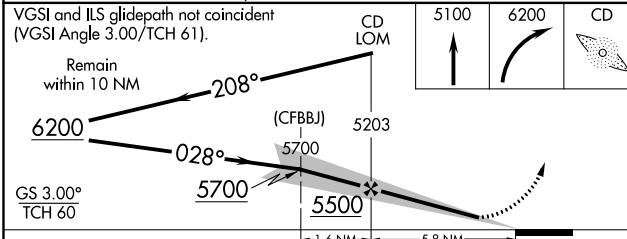
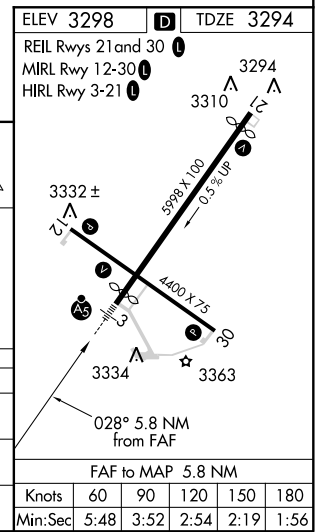
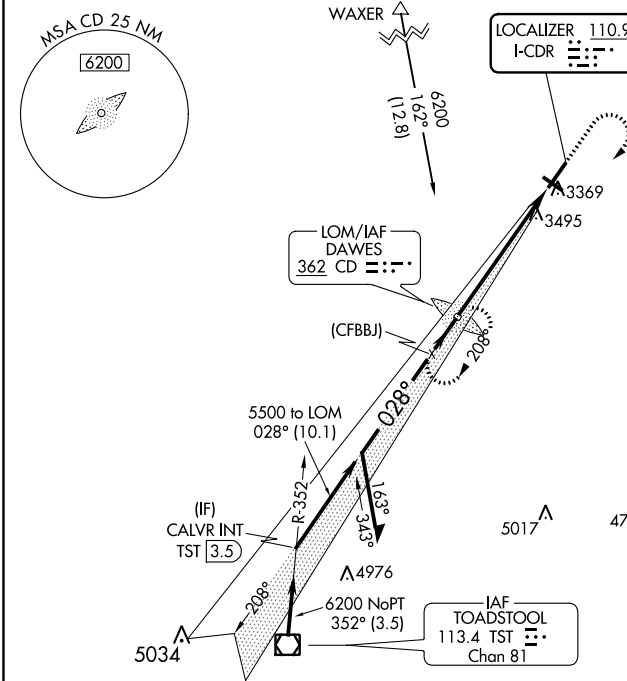
ADF required. When local altimeter setting not received, use Pine Ridge altimeter setting and increase all DA 70 feet and all MDA 80 feet; increase S-LOC 3 Cats B/C/D visibility ¼ mile, Circling Cat B visibility ¼ mile and Cat C visibility ⅜ mile and Cat D visibility ½ mile. For inop MALSRS increase S-LOC 3 Cats C and D visibility to 1 ⅞ mile. For inop MALSRS when using Pine Ridge altimeter setting increase S-ILS 3 all Cats visibility to ⅞ mile and S-LOC 3 Cats C and D visibility to 2 miles.

**MALSRS**  
  
**MISSED APPROACH:**  
 Climb to 5100 then climbing right turn to 6200 direct DAWES LOM and hold.

ASOS  
**118.05**

DENVER CENTER  
**127.95 338.2**

UNICOM  
**122.8 (CTAF) 0**



CATEGORY	A	B	C	D
S-ILS 3		3494-½	200 (200-½)	
S-LOC 3	3960-½	666 (700-½)	3960-1½	666 (700-1½)
CIRCLING	3960-1	662 (700-1)	3960-1⅞	3960-2 662 (700-2)

NC-2, 16 JUL 2020 to 13 AUG 2020

NC-2, 16 JUL 2020 to 13 AUG 2020