

WAAS CH <b>90523</b> <b>W21A</b>	APP CRS <b>208°</b>	Rwy Idg TDZE Apt Elev	<b>5500</b> <b>3286</b> <b>3298</b>
--	------------------------	-----------------------------	---

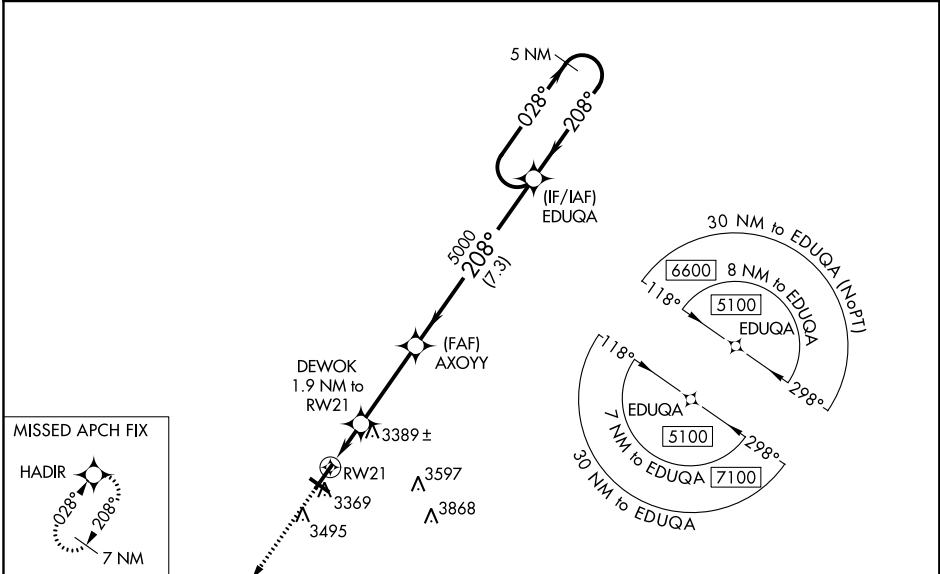
# RNAV (GPS) RWY 21

CHADRON MUNI (CDR)

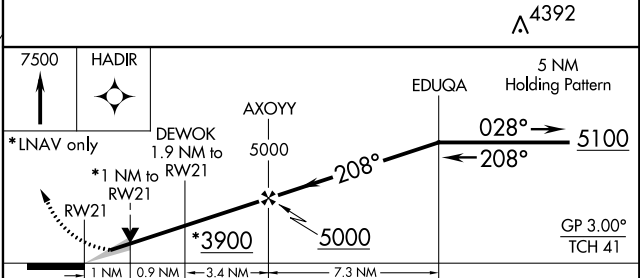
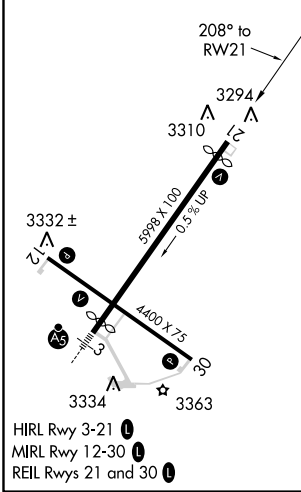
Baro-VNAV NA when using Pine Ridge altimeter setting. For uncompensated Baro-VNAV systems, LNAV/VNAV NA below -21°C (-5°F) or above 23°C (73°F). DME/DME RNP-0.3 NA. VDP NA with Pine Ridge altimeter setting. When local altimeter setting not received, use Pine Ridge altimeter setting and increase all DA 70 feet and all MDA 80 feet; increase LPV and LNAV/VNAV all Cats visibility 1/4 mile, LNAV Cats C and D visibility 3/8 mile and Circling Cats C and D visibility 1/4 mile.

MISSED APPROACH: Climb to 7500 direct HADIR and hold, continue climb-in-hold to 7500.

ASOS <b>118.05</b>	DENVER CENTER <b>127.95 338.2</b>	UNICOM <b>122.8 (CTAF)</b>
-----------------------	--------------------------------------	-------------------------------



ELEV <b>3298</b>	<b>D</b>	TDZE <b>3286</b>
------------------	----------	------------------



CATEGORY	A	B	C	D
LPV DA		3536-7/8	250 (300-7/8)	
LNAV/VNAV DA		3684-1 3/8	398 (400-1 3/8)	
LNAV MDA		3640-1	354 (400-1)	
CIRCLING	3820-1 522 (600-1)	3880-1 582 (600-1)	3920-1 3/4 622 (700-1 3/4)	3920-2 622 (700-2)

NC-2, 16 JUL 2020 to 13 AUG 2020

NC-2, 16 JUL 2020 to 13 AUG 2020