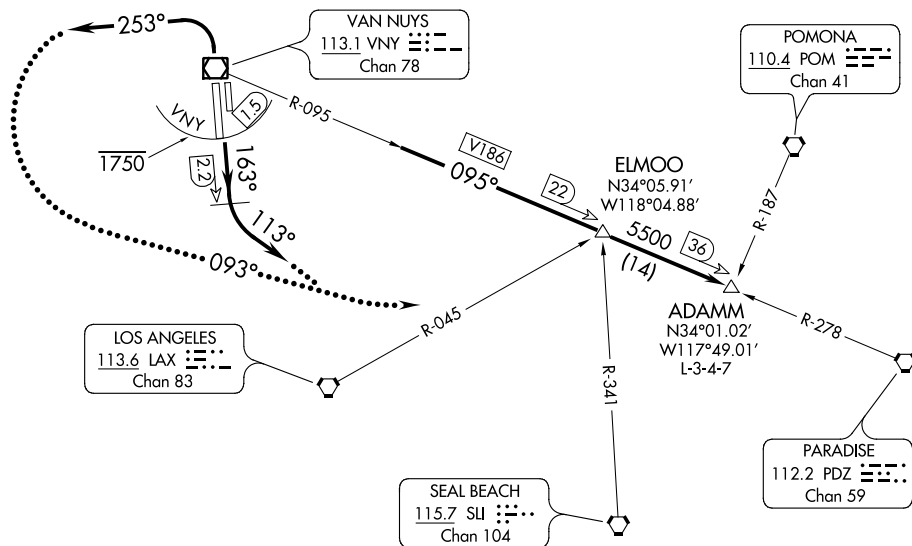


ATIS  
127.55  
CLNC DEL  
126.6 239.0  
CPDLC  
GND CON  
121.7  
SOCAL DEP CON  
124.6 298.85

**TOP ALTITUDE:  
ASSIGNED BY ATC**

### TAKEOFF MINIMUMS

Rwy 16L: Standard with minimum climb of 380' per NM to 2600.  
Rwy 16R: Standard with minimum climb of 450' per NM to 2600.  
Rwys 34L/R: Standard with minimum climb of 480' per NM to 4200.



NOTE: RADAR required.  
NOTE: DME required.  
NOTE: Cross VNY DME 1.5 DME south at or below 1750.

NOTE: Chart not to scale.

### DEPARTURE ROUTE DESCRIPTION

**TAKEOFF RUNWAYS 16L/R:** Climb on heading 163° until VNY 2.2 DME, then climbing left turn heading 113°, FOR RADAR VECTORS to VNY R-095 to ADAMM, thence. . . .  
**TAKEOFF RUNWAYS 34L/R:** Climbing left turn heading 253°, FOR RADAR VECTORS to VNY R-095 to ADAMM, thence. . . .  
. . . .on (transition) or (assigned route). Maintain ATC assigned altitude, expect filed altitude/flight level 10 minutes after departure.  
**LOST COMMUNICATIONS:** If not in contact with departure control within 3 NM, turn left heading 093° to intercept VNY R-095 to ADAMM INT maintain 5500' or as assigned.

SW-3, 16 JUL 2020 to 13 AUG 2020

SW-3, 16 JUL 2020 to 13 AUG 2020