

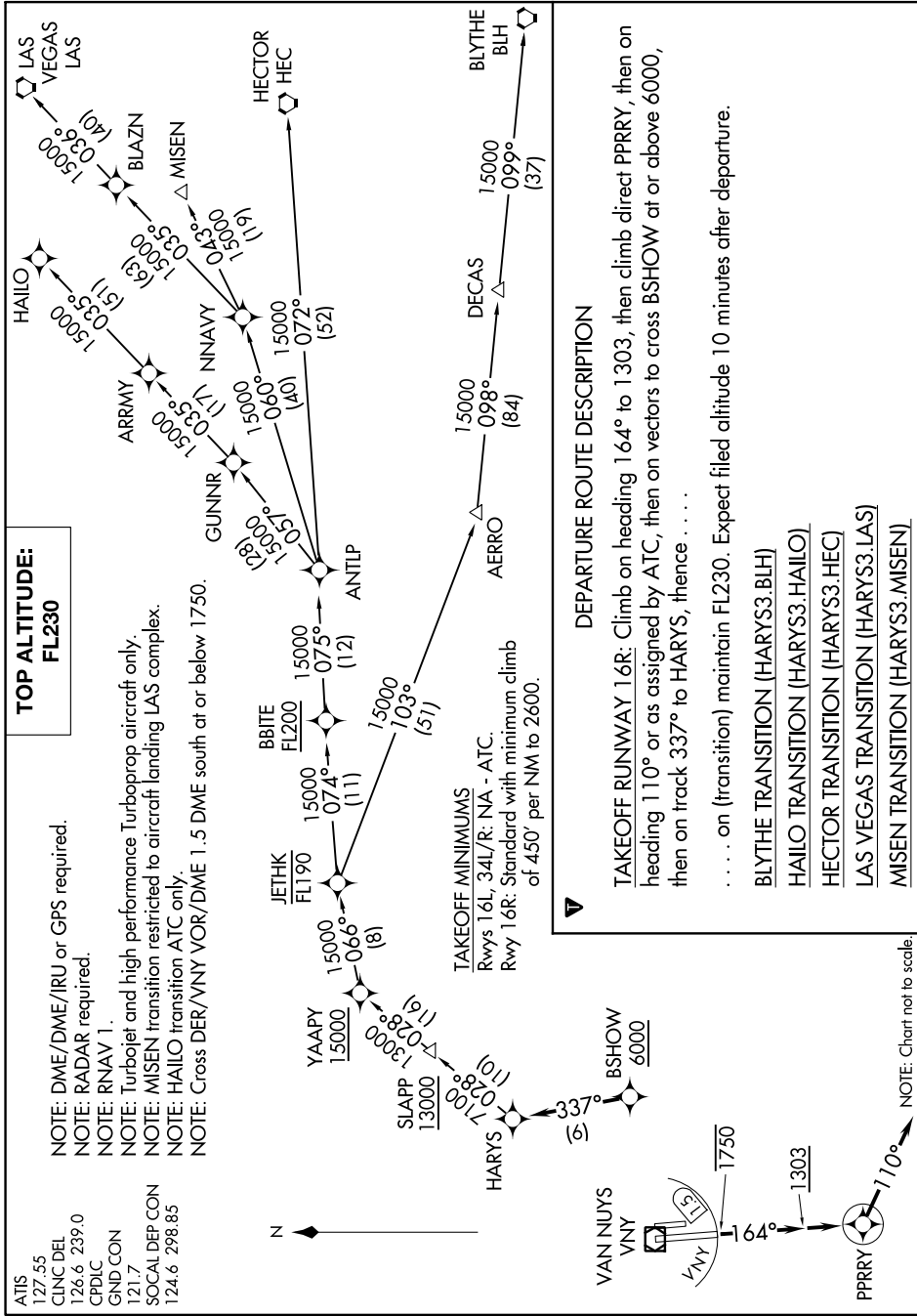
SW-3, 16 JUL 2020 to 13 AUG 2020

**TOP ALTITUDE:
FL230**

- NOTE: DME/DME/IRU or GPS required.
- NOTE: RADAR required.
- NOTE: RNAV 1.
- NOTE: Turboplet and high performance Turboprop aircraft only.
- NOTE: MISEN transition restricted to aircraft landing LAS complex.
- NOTE: HAILO transition ATC only.
- NOTE: Cross DER/VNY VOR/DME 1.5 DME south of or below 17500.

ATIS 127.55
 CLNC DEL 126.6 239.0
 CPDLC
 GND CON 121.7
 SOCIAL DEP CON 124.6 298.85

HARYS THREE DEPARTURE (RNAV)
 (HARYS3.HARYS) 05DEC19



NOTE: Chart not to scale.