

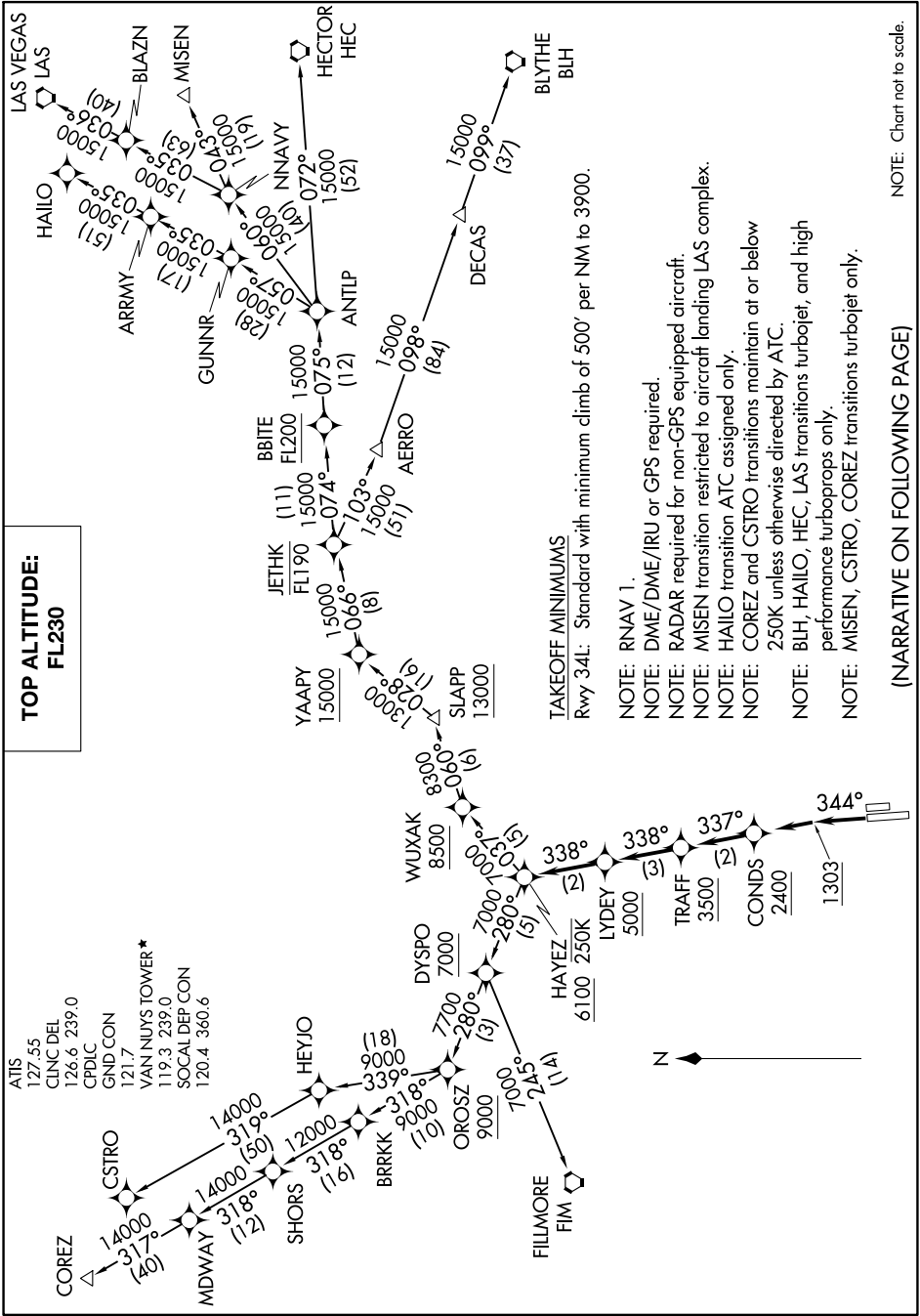
HAYEZ EIGHT DEPARTURE (RNAV)

AL-552 (FAA)

VAN NUYS (VNY)
VAN NUYS, CALIFORNIA

SW-3, 16 JUL 2020 to 13 AUG 2020

**TOP ALTITUDE:
FL230**



TAKEOFF MINIMUMS
Rwy 34L: Standard with minimum climb of 500' per NM to 3900.

- NOTE: RNAV 1.
- NOTE: DME/DME/IRU or GPS required.
- NOTE: RADAR required for non-GPS equipped aircraft.
- NOTE: MISEN transition restricted to aircraft landing LAS complex.
- NOTE: HAYEZ transition ATC assigned only.
- NOTE: COREZ and CSTRO transitions maintain at or below 250K unless otherwise directed by ATC.
- NOTE: BLH, HAYEZ, HEC, LAS transitions turbojet, and high performance turboprops only.
- NOTE: MISEN, CSTRO, COREZ transitions turbojet only.

(NARRATIVE ON FOLLOWING PAGE)

NOTE: Chart not to scale.

HAYEZ EIGHT DEPARTURE (RNAV)

SW-3, 16 JUL 2020 to 13 AUG 2020