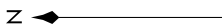


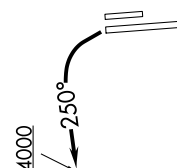
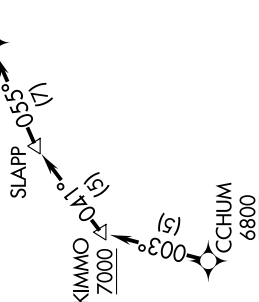
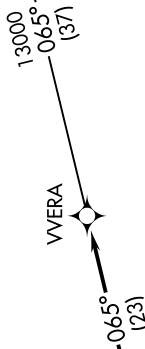
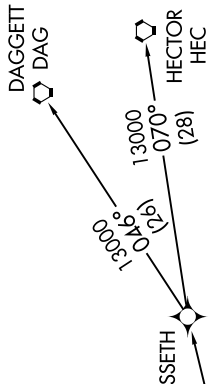
SW-3, 16 JUL 2020 to 13 AUG 2020

SOCAL DEP CON
134.2 338.2
CLNC DEL
126.6 239.0
CPDLC

NOTE: DME/DME/IRU or GPS required.
NOTE: RNAV 1.
NOTE: RADAR required.
NOTE: This departure procedure authorized
for turboprop aircraft only.



TOP ALTITUDE:
13000



TAKEOFF MINIMUMS
Rwys 16L/R, 34R: NA-ATC.
Rwy 34L: Standard with minimum climb of 370' per NM to 7100.

NOTE: Chart not to scale.

DEPARTURE ROUTE DESCRIPTION

TAKEOFF RUNWAY 34L: Climbing left turn heading 250° to 4000, expect vectors to cross CCHUM at or above 6800, then on track 003° to cross KIMMO at or above 7000, then on depicted route to VVERA, thence

. . . . on (transition). Maintain 13000. Expect filed altitude 10 minutes after departure.

DAGGETT TRANSITION (VVERA2.DAG)

HECTOR TRANSITION (VVERA2.HEC)

SW-3, 16 JUL 2020 to 13 AUG 2020