

FORT RUCKER, ALABAMA

ILS or LOC RWY 6

LOC I-OZR 109.7 Chan 34	APCH CRS 064°	Rwy Idg TDZE Arprt Elev 4546 298 301
---	-------------------------	--

AL-577 [USA]

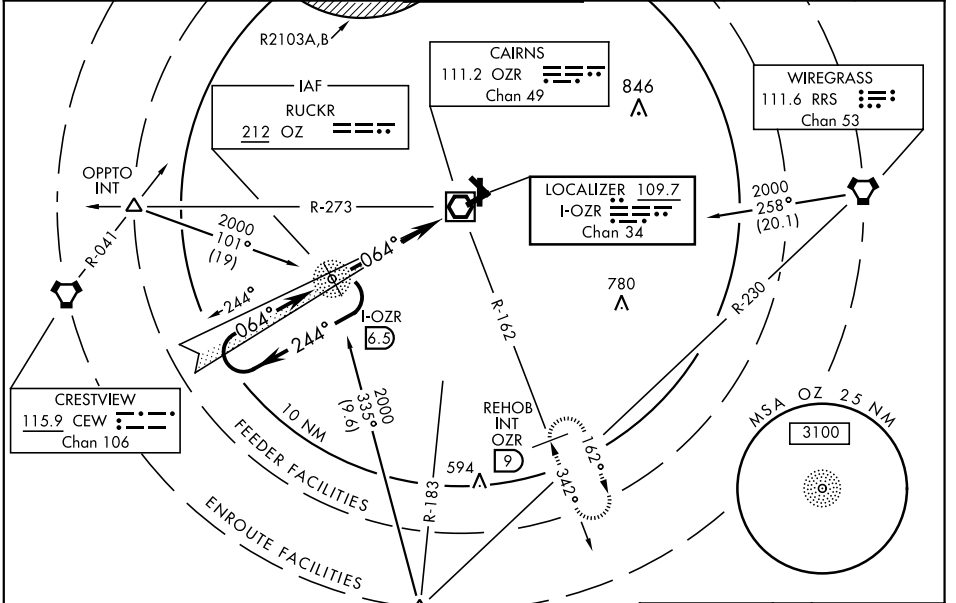
CAIRNS AAF (KOZR)

▼ * When ALS inop, increase CAT ABC vis to 1 mile, CAT D RVR to 60 and vis to 1¼ miles.

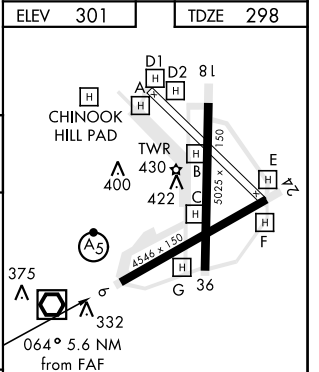
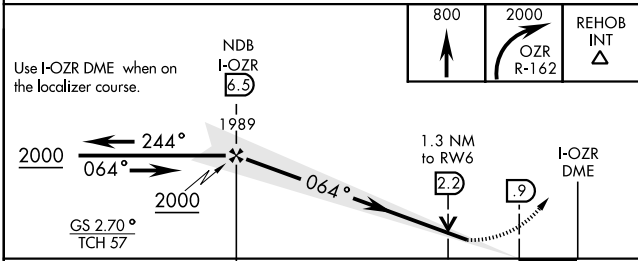


MISSED APPROACH: Climb to 800 then climbing right turn to 2000 via OZR VOR/DME R-162 to REHOB INT (OZR 9 DME) and hold; or when directed by ATC, climb to 800 then climbing left turn to 2000 heading 290° within 10 NM (RADAR required).

CAIRNS APP CON	CAIRNS TOWER ★	GND CON	CLNC DEL	PAR
ATIS 111.2 316.15	021°-120° 125.4 327.125 121°-219° 133.75 270.35 220°-340° 133.45 239.275 341°-020° 121.1 319.25	135.2 (CTAF) 248.55	121.9 288.25	118.075 380.1



ADF or DME REQUIRED



CATEGORY	A	B	C	D
S-ILS 6		498/24	200 (200-½)	
S-LOC 6 *	760/24	462 (500-½)	760/40 462 (500-¾)	760/50 462 (500-1)
CIRCLING	760-1 459 (500-1)	780-1 479 (500-1)	860-1½ 559 (600-1½)	860-2 559 (600-2)

HIRL Rwy 6-24	MIRL Rwy 18-36				
FAF to MAP 5.6 NM					
Knots	60	90	120	150	180
Min:Sec	5:36	3:44	2:48	2:14	1:52

FORT RUCKER, ALABAMA

31° 16' N-85° 43' W

CAIRNS AAF (KOZR)

Amdt 2A 13SEP18

ILS or LOC RWY 6

SE-4, 16 JUL 2020 to 13 AUG 2020

SE-4, 16 JUL 2020 to 13 AUG 2020