

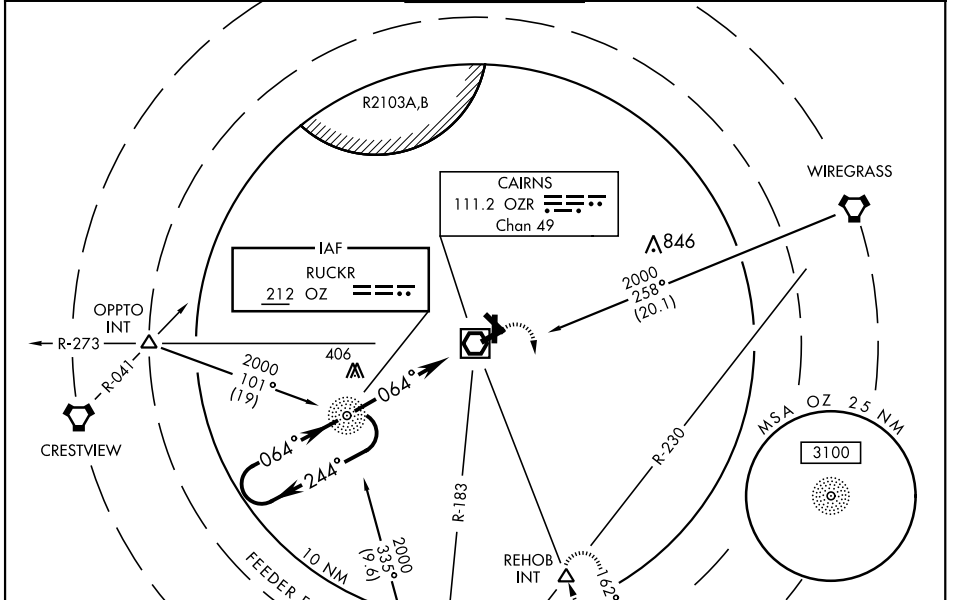
NDB RWY 6

NDB OZ 212	APCH CRS 064°	Rwy Idg TDZE Arprt Elev 4546 298 301	AL-577 [USA]	CAIRNS AAF (KOZR)
----------------------	-------------------------	--	--------------	-------------------

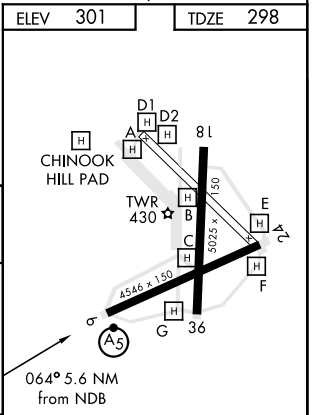
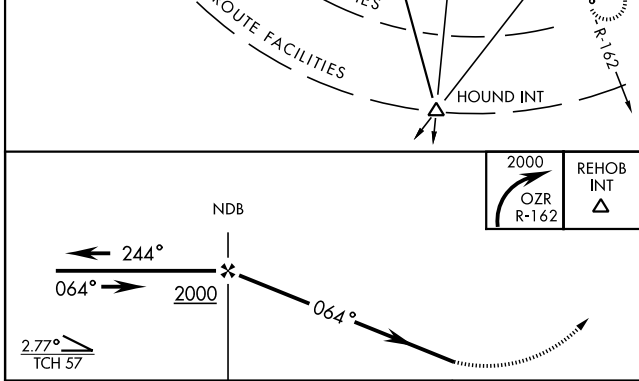
▼ * When ALS inop, increase CAT AB RVR to 50 and vis to 1 mile, CAT CD RVR to 60 and vis to 1 1/4 miles. Visibility reduction by helicopters NA.

MALS R MISSED APPROACH: Climbing right turn to 2000 via OZR VOR/DME R-162 to REHOB INT and hold; or when directed by ATC, climbing left turn to 2000 heading 290° within 10 NM (RADAR required).

ATIS 111.2 316.15	CAIRNS APP CON 021°-120° 125.4 327.125 121°-219° 133.75 270.35 220°-340° 133.45 239.275 341°-020° 121.1 319.25	CAIRNS TOWER ★ 135.2 (CTAF) 248.55	GND CON 121.9 288.25	CLNC DEL 118.075 380.1	PAR
---------------------------------------	--	--	--	--	-----



ELEV 301	TDZE 298
----------	----------



CATEGORY	A	B	C	D
S-6 *	720/40 422 (500-3/4)			
CIRCLING	780/40 479 (500-3/4)	860-1 1/2 559 (600-1 1/2)	900-2 599 (600-2)	
FAF to MAP 5.6 NM				
Knots	60	90	120	150 180
Min:Sec	5:36	3:44	2:48	2:14 1:52

FORT RUCKER, ALABAMA 31° 16' N-85° 43' W CAIRNS AAF (KOZR)

NDB RWY 6

SE-4, 16 JUL 2020 to 13 AUG 2020

SE-4, 16 JUL 2020 to 13 AUG 2020