

FORT RUCKER, ALABAMA

# RNAV (GPS) RWY 36

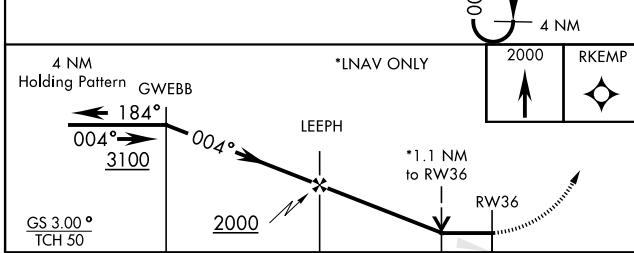
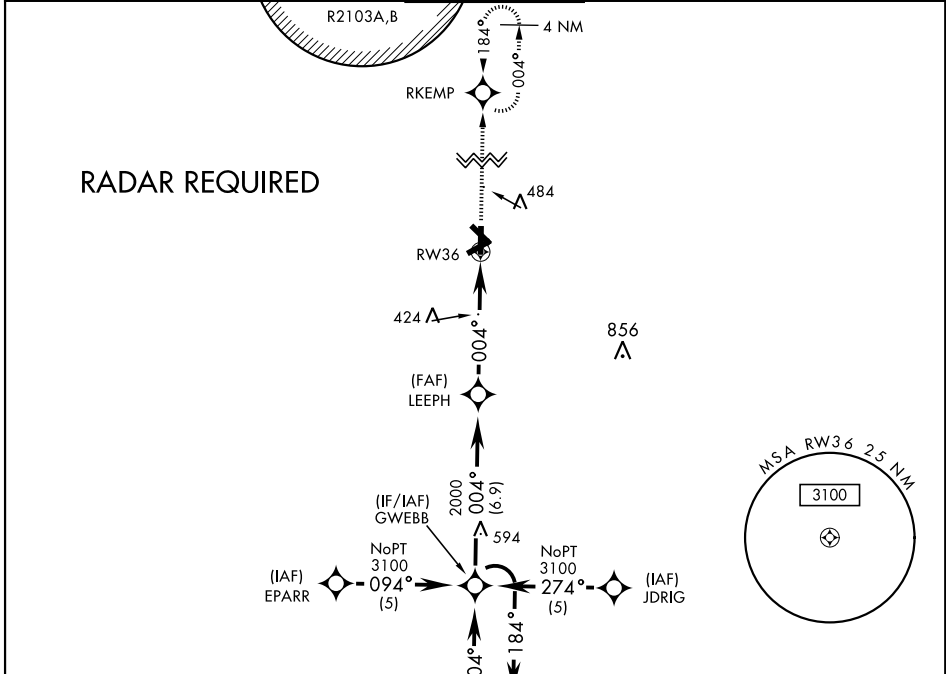
WAAS CH <b>63110</b> <b>W36A</b>	APCH CRS <b>004°</b>	Rwy Idg TDZE Arprt Elev	<b>5025</b> <b>298</b> <b>301</b>
--	-------------------------	-------------------------------	---

AL-577 [USA]

CAIRNS AAF (KOZR)

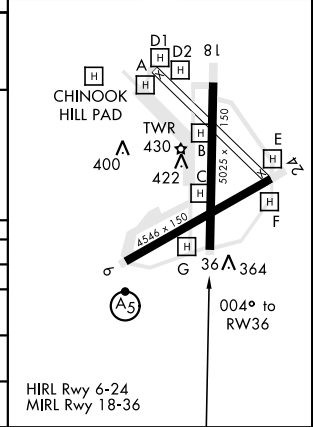
**▼** DME/DME RNP-0.3 NA.  
For uncompensated BARO-VNAV systems, LNAV/VNAV NA MISSED APPROACH: Climb to 2000 direct RKEMP and hold.

ATIS <b>111.2</b> <b>316.15</b>	CAIRNS APP CON 021°-120° <b>125.4</b> <b>327.125</b> 121°-219° <b>133.75</b> <b>270.35</b> 220°-340° <b>133.45</b> <b>239.275</b> 341°-020° <b>121.1</b> <b>319.25</b>	CAIRNS TOWER ★ <b>135.2</b> (CTAF) <b>248.55</b>	GND CON <b>121.9</b> <b>288.25</b>	CLNC DEL <b>118.075</b> <b>380.1</b>	PAR
---------------------------------------	--	--	--	--	-----



ELEV 301	TDZE 298
----------	----------

CATEGORY	A	B	C	D
LPV DA		565-1	267 (300-1)	
LNAV/VNAV DA		634-1¼	336 (400-1¼)	
LNAV MDA	680-1	382 (400-1)		680-1¼ 382 (400-1¼)
CIRCLING	740-1 439 (500-1)	780-1 479 (500-1)	800-1½ 499 (500-1½)	860-2 559 (600-2)



FORT RUCKER, ALABAMA

31° 16'N-85° 43'W

CAIRNS AAF (KOZR)

Orig 15232

# RNAV (GPS) RWY 36

SE-4, 16 JUL 2020 to 13 AUG 2020

SE-4, 16 JUL 2020 to 13 AUG 2020