

FORT RUCKER, ALABAMA

RNAV (GPS) RWY 6

WAAS CH 50537 W06A	APCH CRS 064°	Rwy Idg 4546 TDZE 298 Arprt Elev 301	AL-577 [USA]	CAIRNS AAF (KOZR)
--	-------------------------	---	--------------	-------------------

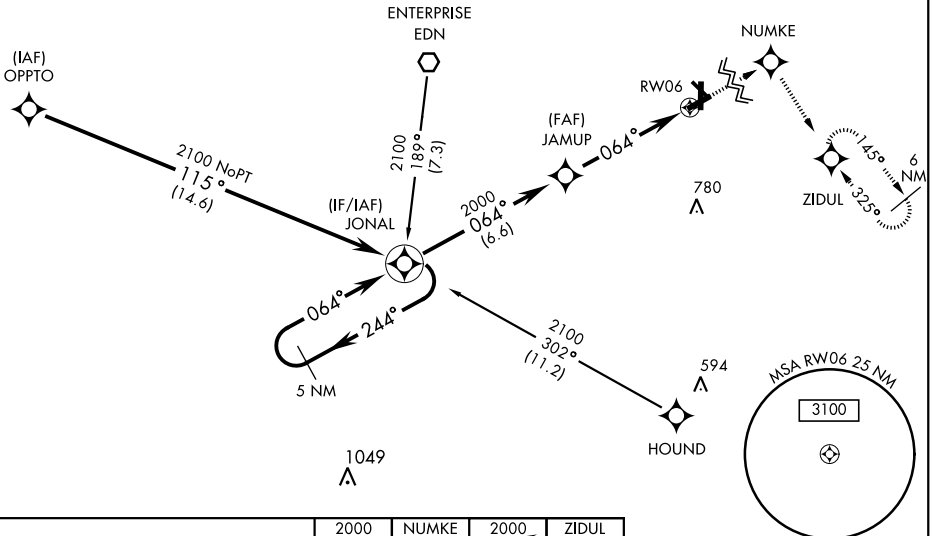
▼ * When ALS inop, increase LNAV/VNAV visibility all CATS to RVR 40, increase LNAV CAT AB visibility to RVR 55 and CAT CD visibility to 1 $\frac{3}{8}$.

MALSRL MISSED APPROACH: Climb to 2000 direct NUMKE then climbing right turn on track 148° to ZIDUL and hold.

ATIS 111.2 316.15	CAIRNS APP CON 021°-120° 125.4 327.125 121°-219° 133.75 270.35 220°-340° 133.45 239.275 341°-020° 121.1 319.25	CAIRNS TOWER ★ 135.2 (CTAF) 248.55	GND CON 121.9 288.25	CLNC DEL 118.075 380.1	PAR
---------------------------------------	--	--	--	--	-----

DME/DME RNP-0.3 NA.

For uncompensated BARO-VNAV systems, LNAV/VNAV NA below -5C (23F) or above 54C (130F).



SE-4, 16 JUL 2020 to 13 AUG 2020

SE-4, 16 JUL 2020 to 13 AUG 2020

		ELEV 301	TDZE 298	
CATEGORY	A	B	C	D
LPV DA	498/24		200	(200- $\frac{1}{2}$)
LNAV/VNAV DA*	560/24		262	(300- $\frac{1}{2}$)
LNAV MDA*	760/24 462 (500- $\frac{1}{2}$)		760/50 462 (500-1)	
CIRCLING	760-1 459 (500-1)	780-1 479 (500-1)	860-1 $\frac{1}{2}$ 559 (600-1 $\frac{1}{2}$)	900-2 599 (600-2)

FORT RUCKER, ALABAMA

31° 16'N-85° 43'W

CAIRNS AAF (KOZR)

Amdt 1 25JUN15

RNAV (GPS) RWY 6

HIRL Rwy 6-24
MIRL Rwy 18-36