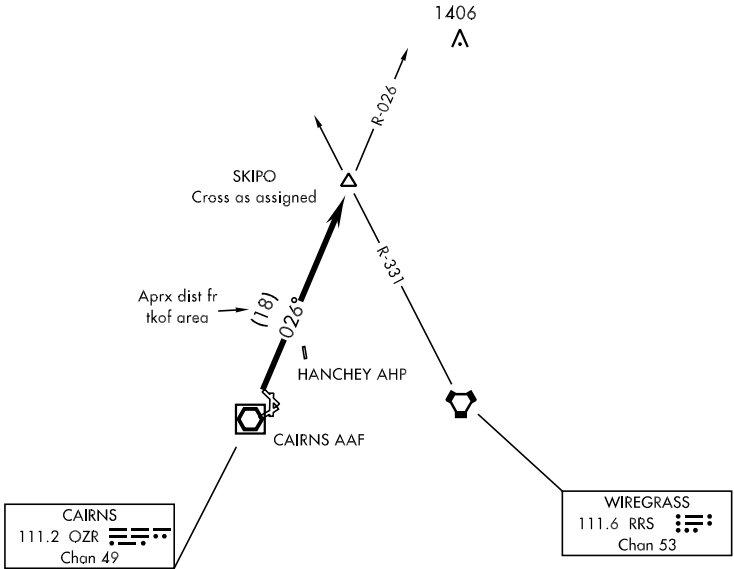


SKIPO-TWO DEPARTURE (SKIPO2•SKIPO)

ATIS 111.2 316.15
 CLNC DEL
 118.075 380.1
 GND CON
 121.9 288.25
 CAIRNS TOWER ★
 135.2 (CTAF) 248.55
 DEP CON
 125.4 327.125
 JACKSONVILLE CENTER
 120.2 346.4

SL-577 [USA]

RADAR REQUIRED



SE-4, 16 JUL 2020 to 13 AUG 2020

SE-4, 16 JUL 2020 to 13 AUG 2020

DEPARTURE ROUTE DESCRIPTION

TAKE-OFF RWY 6 or RWY 18: Climbing left turn heading 360°

TAKE-OFF RWY 24: Climbing right turn heading 050°

TAKE-OFF RWY 36: Climb heading 360°

TAKE-OFF PAD D1: Climb heading 015°

TAKE-OFF PAD D2: Climb heading 360°

Maintain 2000, expect clearance to requested altitude/flight level ten (10) minutes after departure.

.... Intercept OZR VOR/DME R-026 to SKIPO INT.