

FORT RUCKER, ALABAMA

# VOR RWY 6

CAIRNS AAF (KOZR)

VOR/DME OZR <b>111.2</b> Chan <b>49</b>	APCH CRS <b>056°</b>	Rwy Idg TDZE Arprt Elev <b>4546</b> <b>298</b> <b>301</b>
---	-------------------------	--

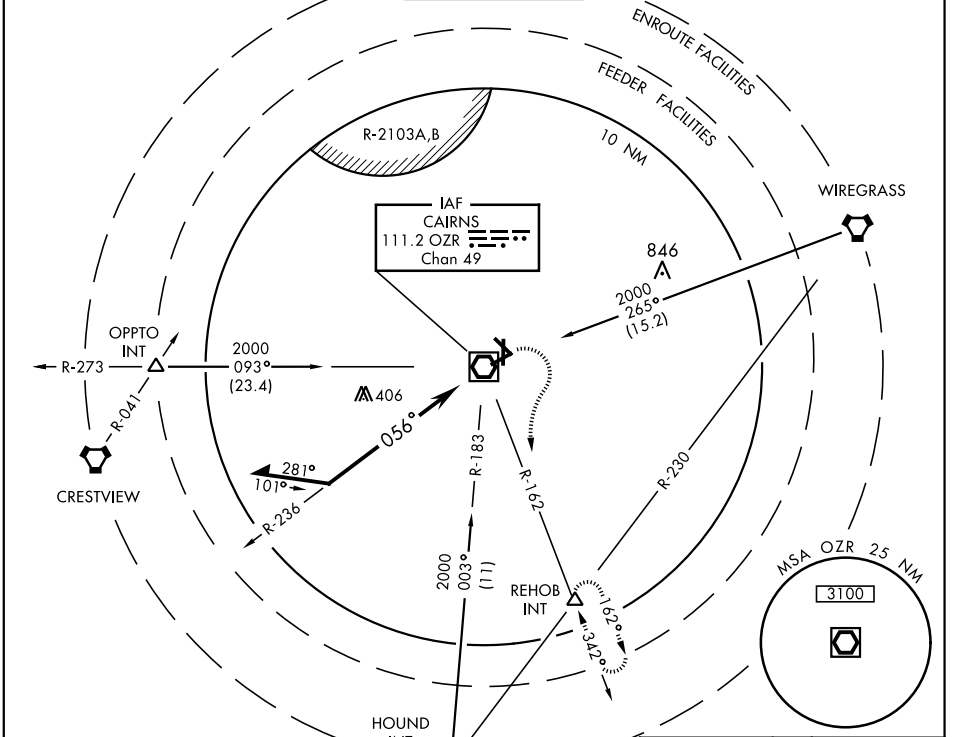
AL-577 [USA]

Visibility reduction by helicopters NA.  
 \* When ALS inop, increase CAT AB RVR to 5000, vis to 1 mile, CAT CD RVR to 6000 and vis to 1½ miles.

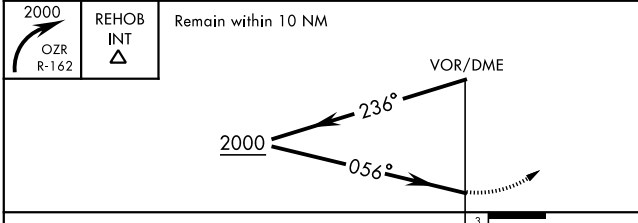


MISSED APPROACH: Climbing right turn to 2000 via OZR VOR/DME R-162 to REHOB INT and hold; or when directed by ATC, climbing left turn to 2000 heading 290° within 10 NM (RADAR required).

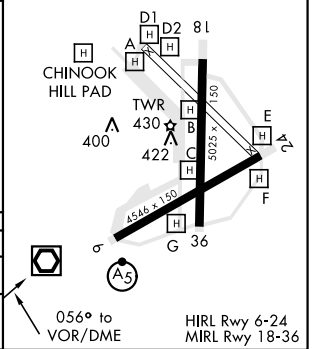
CAIRNS APP CON	CAIRNS TOWER *	GND CON	CLNC DEL	PAR
ATIS <b>111.2</b> <b>316.15</b>	021°-120° <b>125.4</b> <b>327.125</b> 121°-219° <b>133.75</b> <b>270.35</b> 220°-340° <b>133.45</b> <b>239.275</b> 341°-020° <b>121.1</b> <b>319.25</b>	<b>135.2</b> (CTAF) <b>248.55</b>	<b>121.9</b> <b>288.25</b>	<b>118.075</b> <b>380.1</b>



ELEV	301	TDZE	298
------	-----	------	-----



CATEGORY	A	B	C	D
S-6 *	740/40 442 (500-¾)			
CIRCLING	740-1 439 (500-1)	780-1 479 (500-1)	860-1½ 559 (600-1½)	900-2 599 (600-2)



FORT RUCKER, ALABAMA

31° 16'N-85°43'W

CAIRNS AAF (KOZR)

# VOR RWY 6

Amdt 15B 13SEP18

SE-4, 16 JUL 2020 to 13 AUG 2020

SE-4, 16 JUL 2020 to 13 AUG 2020