

LOC I-RGO 109.5	APP CRS 189°	Rwy Idg 7000
		TDZE 1218
		Apt Elev 1226

ILS or LOC RWY 19

AKRON-CANTON RGNL (CAK)

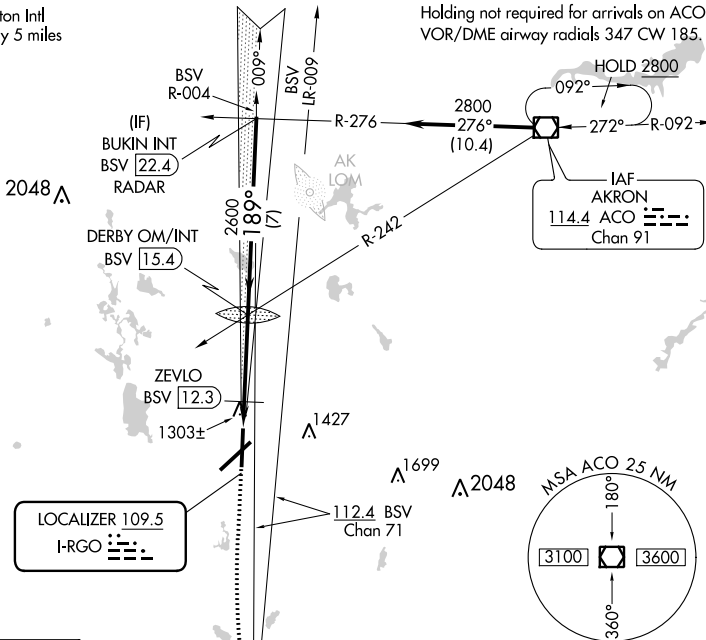
MALSR

MISSED APPROACH: Climb to 1700 then climbing left turn to 3000 direct BSV VOR/DME and hold.

ATIS 121.05	CLEVELAND APP CON * 125.5 269.25	AKRON-CANTON TOWER 134.75 279.575	GND CON 121.7 348.6	CLNC DEL 132.05
-----------------------	--	---	-------------------------------	---------------------------

CAUTION: OM for Akron Fulton Intl may be received approximately 5 miles north of DERBY OM.

Holding not required for arrivals on ACO VOR/DME airway radials 347 CW 185.

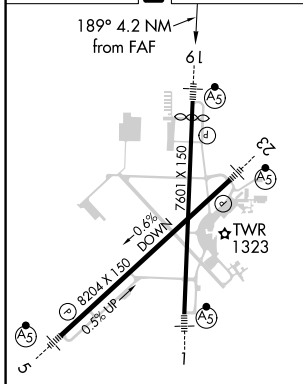


MISSED APCH FIX

BRIGGS BSV 112.4 Chan 71

R-188-008°

ELEV 1226	D	TDZE 1218
-----------	----------	-----------



HIRL Rwy 1-19 and 5-23

FAF to MAP 4.2 NM					
Knots	60	90	120	150	180
Min:Sec	4:12	2:48	2:06	1:41	1:24

CATEGORY	A	B	C	D
S-ILS 19	**1418/24 200 (200-½)			
S-LOC 19	1620/24	402 (400-½)	1620/40	402 (400-¾)
CIRCLING	1760-1	534 (600-1)	1760-1½ 534 (600-1½)	1780-2 554 (600-2)
ZEVLO FIX MINIMUMS				
S-LOC 19	1580/24 362 (400-½)		1580/40 362 (400-¾)	
CIRCLING	1760-1	534 (600-1)	1760-1½ 534 (600-1½)	1780-2 554 (600-2)

EC-2, 16 JUL 2020 to 13 AUG 2020

EC-2, 16 JUL 2020 to 13 AUG 2020