

WAAS CH <b>70420</b> <b>W01A</b>	APP CRS <b>009°</b>	Rwy Idg TDZE <b>1209</b> Apt Elev <b>1228</b>	<b>7007</b>
--	------------------------	---	-------------

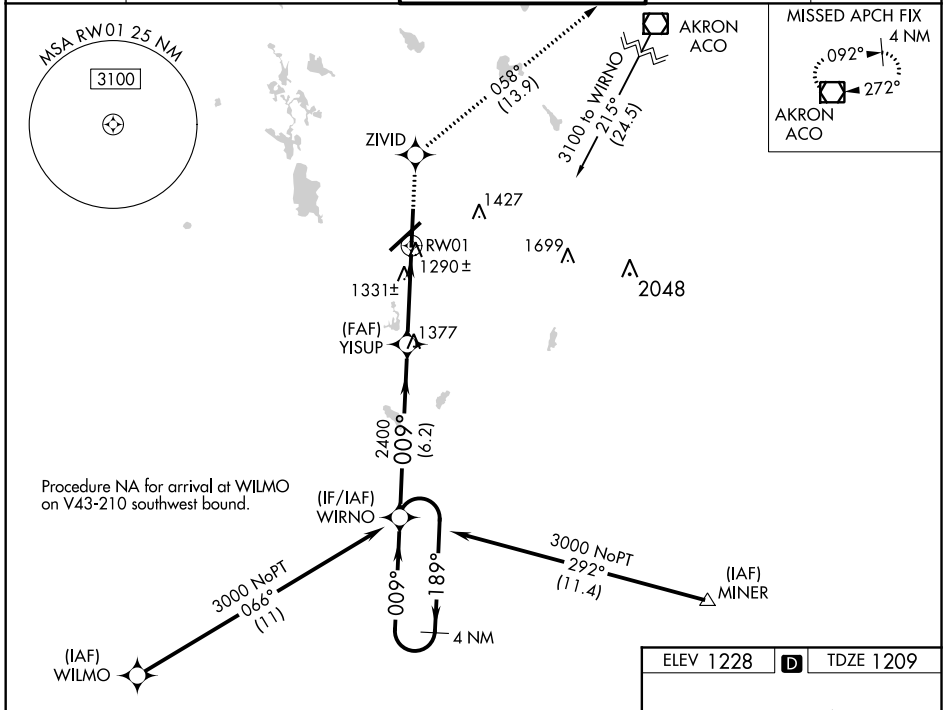
# RNAV (GPS) RWY 1

## AKRON-CANTON RGNL (CAK)

**▼** For uncompensated Baro-VNAV systems, LNAV/VNAV NA below -17°C (2°F) or above 45°C (113°F). DME/DME RNP-0.3 NA.  
 \*\* RVR 1800 authorized with use of FD or AP or HUD to DA.

**MALSRR** MISSED APPROACH: Climb to 3000 direct ZIVID and on track 058° to ACO VOR/DME and hold.

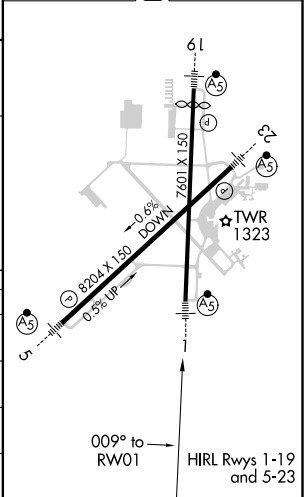
ATIS <b>121.05</b>	CLEVELAND APP CON * <b>125.5 269.25</b>	AKRON-CANTON TOWER <b>134.75 279.575</b>	GND CON <b>121.7 348.6</b>	CLNC DEL <b>132.05</b>
-----------------------	--	---	-------------------------------	---------------------------



Procedure NA for arrival at WILMO on V43-210 southwest bound.

ELEV 1228	<b>D</b>	TDZE 1209
-----------	----------	-----------

4 NM Holding Pattern	WIRNO				3000	ZIVID	tr 058°	ACO
	YISUP				2400			
	← 189°		→ 009°		009°	*LNAV only		
GP 3.00° TCH 53	6.2 NM		2.4 NM		1.1 NM		*1.1 NM to RW01	
CATEGORY	A	B	C	D				
LPV DA**	1409/24		200 (200-½)					
LNAV/VNAV DA	1542/40		333 (400-¾)					
LNAV MDA	1600/24		391 (400-½)		1600/50		391 (400-1)	
CIRCLING	1760-1	532 (600-1)	1760-1½ 532 (600-1½)		1780-2		552 (600-2)	



EC-2, 16 JUL 2020 to 13 AUG 2020

EC-2, 16 JUL 2020 to 13 AUG 2020