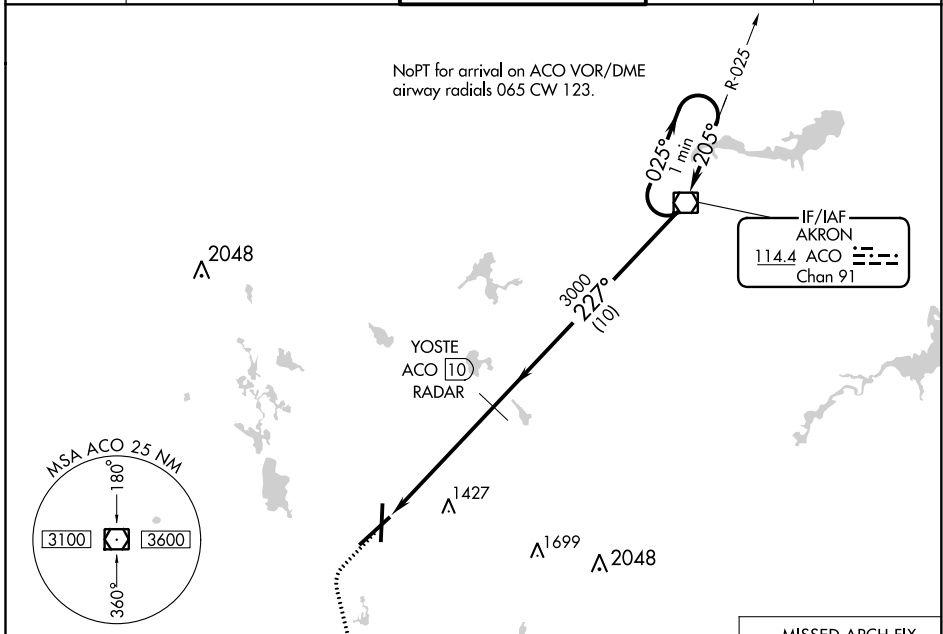


VOR/DME ACO <b>114.4</b> Chan <b>91</b>	APP CRS <b>227°</b>	Rwy Idg TDZE <b>1226</b> Apt Elev <b>1228</b>
---	------------------------	---

# VOR RWY 23

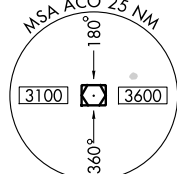
AKRON-CANTON RGNL(CAK)

DME or RADAR required.		MALSR 	MISSED APPROACH: Climb to 3000 then left turn direct BSV VOR/DME and hold.	
ATIS <b>121.05</b>	CLEVELAND APP CON * <b>125.5 269.25</b>	AKRON-CANTON TOWER <b>134.75 279.575</b>	GND CON <b>121.7 348.6</b>	CLNC DEL <b>132.05</b>

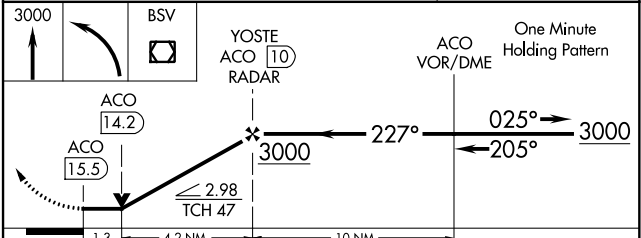
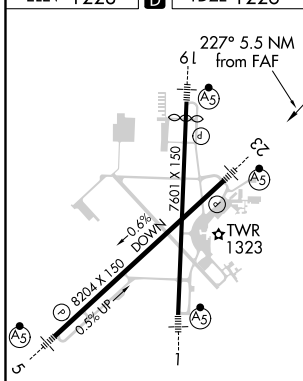


IF/IAF  
AKRON  
114.4 ACO  
Chan 91

MISSED APCH FIX  
BRIGGS  
112.4 BSV  
Chan 71



ELEV 1228 TDZE 1226



HIRL Rwy's 1-19 and 5-23

FAF to MAP 5.5 NM

Knots	60	90	120	150	180
Min:Sec	5:30	3:40	2:45	2:12	1:50

CATEGORY	A	B	C	D
S-23	1680/24	454 (500-½)	1680/40 454 (500-¾)	1680/50 454 (500-1)
CIRCLING	1760-1	532 (600-1)	1760-1½ 532 (600-1½)	1780-2 552 (600-2)

EC-2, 16 JUL 2020 to 13 AUG 2020

EC-2, 16 JUL 2020 to 13 AUG 2020