

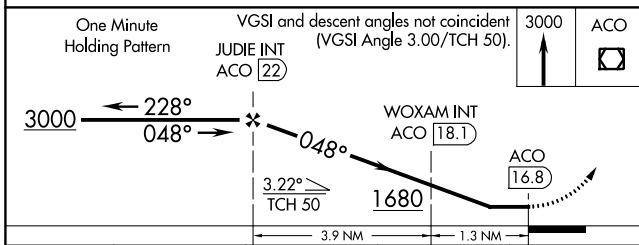
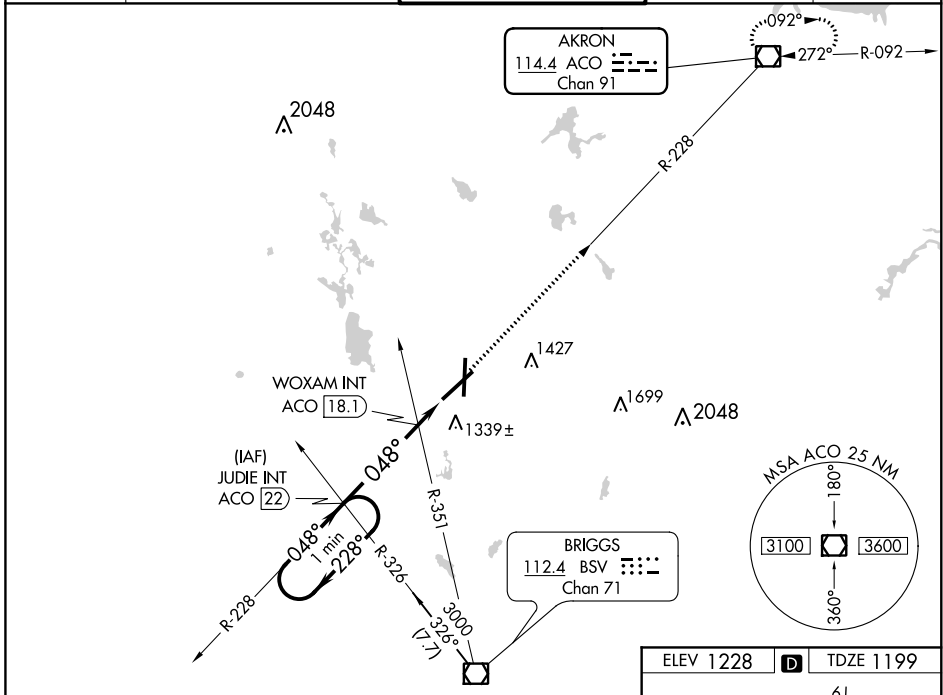
VOR/DME ACO <b>114.4</b> Chan <b>91</b>	APP CRS <b>048°</b>	Rwy Idg TDZE <b>1199</b> Apt Elev <b>1228</b>
---	------------------------	---

# VOR RWY 5

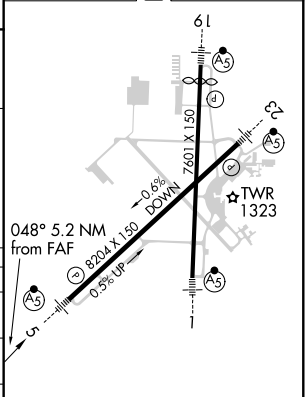
AKRON-CANTON RGNL (CAK)

<b>MALSRL</b> 	MISSED APPROACH: Climb to 3000 direct ACO VOR/DME and hold.
-------------------	--

ATIS <b>121.05</b>	CLEVELAND APP CON * <b>125.5 269.25</b>	AKRON-CANTON TOWER <b>134.75 279.575</b>	GND CON <b>121.7 348.6</b>	CLNC DEL <b>132.05</b>
-----------------------	--	---	-------------------------------	---------------------------



ELEV 1228	<b>D</b>	TDZE 1199
-----------	----------	-----------



CATEGORY	A	B	C	D
S-5	1680/24	481 (500-½)	1680/40 481 (500-¾)	1680/50 481 (500-1)
CIRCLING	1760-1	532 (600-1)	1760-1½ 532 (600-1½)	1780-2 552 (600-2)
WOXAM FIX MINIMUMS				
S-5	1600/24	401 (400-½)	1600/40 401 (400-¾)	1600/50 401 (400-1)
CIRCLING	1760-1	532 (600-1)	1760-1½ 532 (600-1½)	1780-2 552 (600-2)

HIRL Rwy 1-19 and 5-23					
FAF to MAP 5.2 NM					
Knots	60	90	120	150	180
Min:Sec	5:12	3:28	2:36	2:05	1:44