

WAAS CH 53429 W23A	APP CRS 229°	Rwy Idg TDZE Apt Elev	4386 2284 2284
--	------------------------	-----------------------------	---

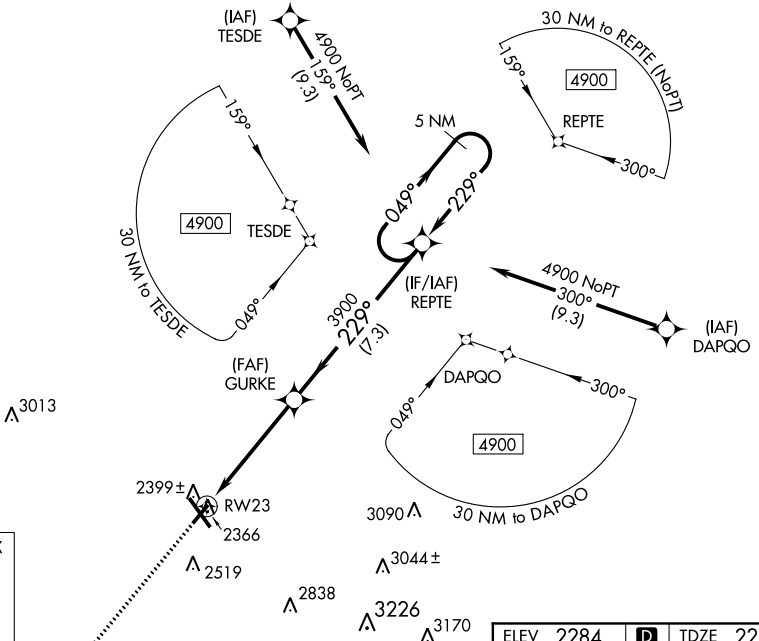
RNAV (GPS) RWY 23

JOHN MURTHA JOHNSTOWN-CAMBRIA COUNTY (JST)

T For uncompensated Baro-VNAV systems, LNAV/VNAV NA below -19°C (-2°F) or above 29°C (84°F). When local altimeter setting not received, procedure NA.
A DME/DME RNP-0.3 NA. Rwy 23 helicopter visibility reduction below ¾ SM NA.

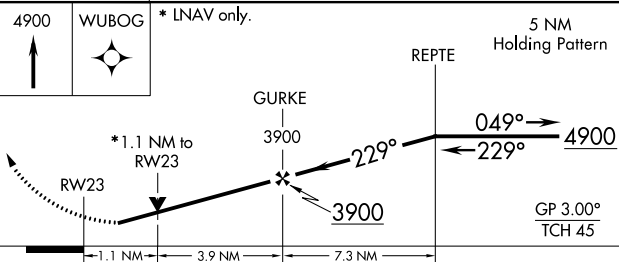
MISSED APPROACH: Climb to 4900 direct WUBOG and hold.

ATIS 118.325	JOHNSTOWN APP CON * 121.2 299.2	JOHNSTOWN TOWER * 125.75 (CTAF) 0	GND CON 121.6	CLNC DEL 126.85 235.775	UNICOM 122.95
------------------------	---	---	-------------------------	-----------------------------------	-------------------------

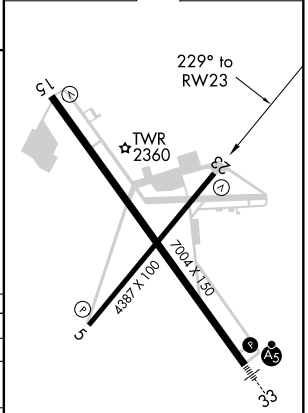


NE-4, 16 JUL 2020 to 13 AUG 2020

NE-4, 16 JUL 2020 to 13 AUG 2020



ELEV 2284	D	TDZE 2284
-----------	----------	-----------



CATEGORY	A	B	C	D
LPV DA		2534-¾	250 (300-¾)	
LNAV/VNAV DA		2584-1	300 (300-1)	
LNAV MDA		2660-1	376 (400-1)	
C CIRCLING	2700-1 416 (500-1)	2880-1 596 (600-1)	2880-1½ 596 (600-1½)	3000-2¼ 716 (800-2¼)

REIL Rws 5 and 23
 HIRL Rwy 15-33 **0**
 MIRL Rws 5-23

RNAV (GPS) RWY 23