

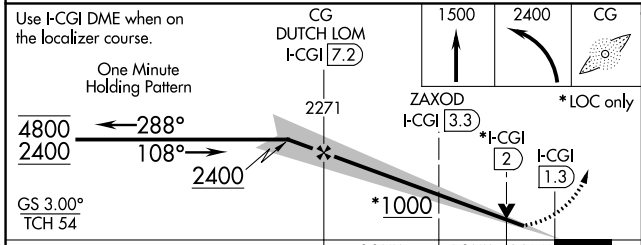
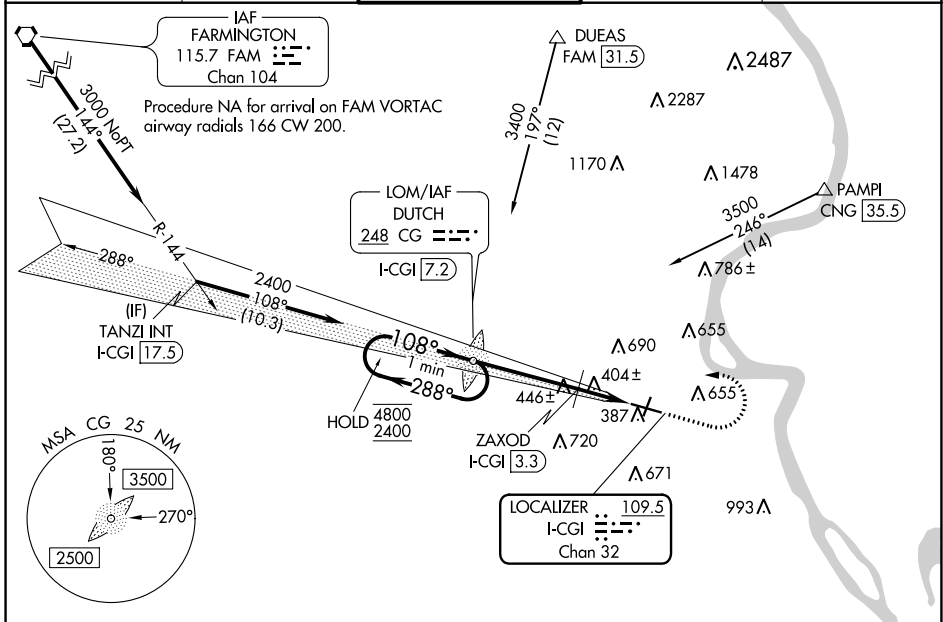
LOC/DME I-CGI <b>109.5</b> Chan <b>32</b>	APP CRS <b>108°</b>	Rwy Idg <b>6499</b> TDZE <b>337</b> Apt Elev <b>342</b>
---	------------------------	---

# ILS or LOC RWY 10

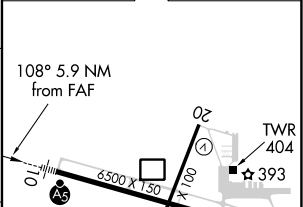
CAPE GIRARDEAU RGNL (CGI)

ADF required.	MALSR 	MISSED APPROACH: Climb to 1500 then climbing left turn to 2400 direct DUTCH LOM/I-CGI 7.2 DME and hold.
For inop ALS, increase S-LOC 10 Cat C/D visibility to 1 1/2 SM.		

ASOS <b>120.55</b>	MEMPHIS CENTER <b>133.65 292.15</b>	CAPE GIRARDEAU TOWER * <b>125.525 (CTAF)</b>	GND CON <b>121.6</b>	UNICOM <b>122.95</b>
-----------------------	--	---	-------------------------	-------------------------



ELEV 342	TDZE 337
----------	----------



CATEGORY	A	B	C	D
S-ILS 10		537-1/2	200 (200-1/2)	
S-LOC 10	1000-1/2	663 (700-1/2)	1000-1 1/2	663 (700-1 1/2)
CIRCLING	1000-1	658 (700-1)	1000-1 7/8 658 (700-1 7/8)	1080-2 1/4 738 (800-2 1/4)
ZAXOD FIX MINIMUMS				
S-LOC 10		660-1/2	323 (400-1/2)	
CIRCLING	860-1 518 (600-1)	960-1 618 (700-1)	1000-1 3/4 658 (700-1 3/4)	1080-2 1/4 738 (800-2 1/4)

MIRL Rwy 2-20	
HIRL Rwy 10-28	
FAF to MAP 5.9 NM	
Knots	60 90 120 150 180
Min:Sec	5:54 3:56 2:57 2:22 1:58

NC-3, 16 JUL 2020 to 13 AUG 2020

NC-3, 16 JUL 2020 to 13 AUG 2020