

WAAS CH 61399 W10A	APP CRS 108°	Rwy Idg 6499 TDZE 337 Apt Elev 342
--	------------------------	---

RNAV (GPS) RWY 10

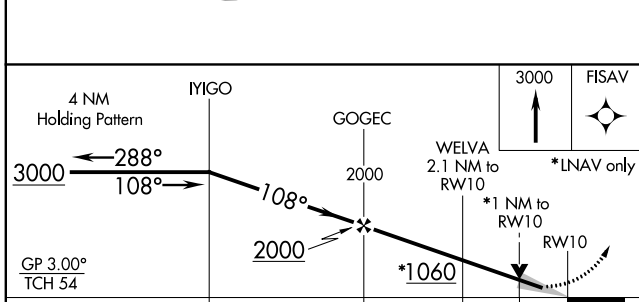
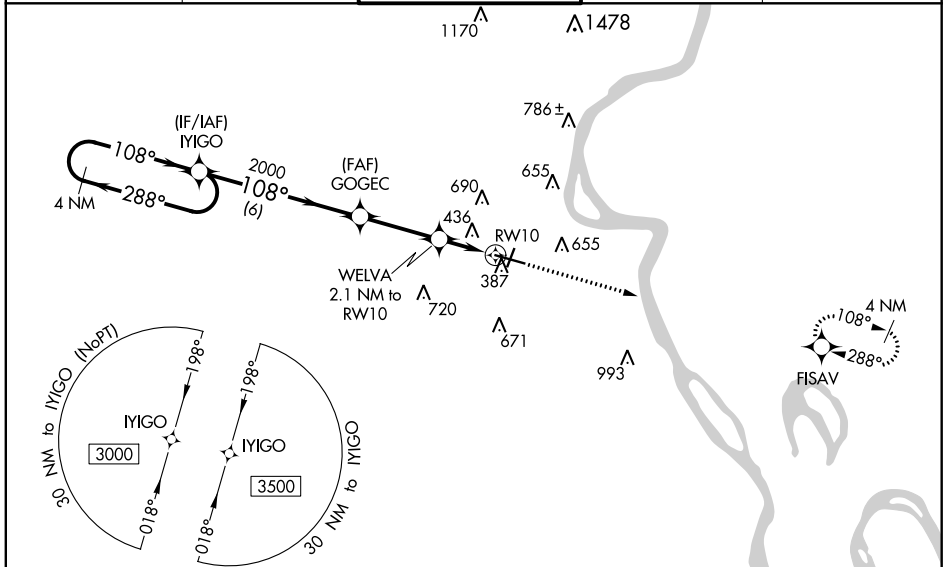
CAPE GIRARDEAU RGNL (CGI)

⚠ For uncompensated Baro-VNAV systems, LNAV/VNAV NA below -17°C (2°F) or above 54°C (130°F). DME/DME RNP-0.3 NA. When local altimeter setting not received, use Cairo Rgnl altimeter setting and increase all DA 48 feet and all MDA 60 feet; increase LNAV Cat C/D visibilities 1/8 mile and Circling Cat C/D visibility 1/4 mile. Baro-VNAV and VDP NA when using Cairo Rgnl altimeter setting. For inop MALS/R, increase LNAV/VNAV visibility all Cats to 7/8 and LNAV Cats C/D visibility to 1 mile. For inop MALS/R when using Cairo Rgnl altimeter setting, increase LNAV Cats C/D visibility to 1 1/8 mile.

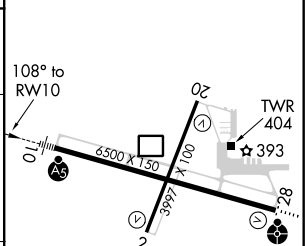


MISSED APPROACH:
Climb to 3000 direct FISAV and hold.

ASOS 120.55	MEMPHIS CENTER 133.65 292.15	CAPE GIRARDEAU TOWER ★ 125.525 (CTAF) 0	GND CON 121.6	UNICOM 122.95
-----------------------	--	---	-------------------------	-------------------------



ELEV 342	D TDZE 337
-----------------	--------------------------



CATEGORY	A	B	C	D
LPV DA		537-1/2	200 (200-1/2)	
LNAV/VNAV DA		603-1/2	266 (300-1/2)	
LNAV MDA	700-1/2	363 (400-1/2)	700-5/8	363 (400-5/8)
C CIRCLING	860-1 518 (600-1)	960-1 618 (700-1)	1000-1 3/4 658 (700-1 3/4)	1080-2 1/4 738 (800-2 1/4)

MIRL Rwy 2-20 **0**
HIRL Rwy 10-28 **0**

NC-3, 16 JUL 2020 to 13 AUG 2020

NC-3, 16 JUL 2020 to 13 AUG 2020