

|  |                        |   |
|--|------------------------|---|
| WAAS<br>CH <b>90199</b><br><b>W28A</b> | APP CRS<br><b>288°</b> | Rwy Idg <b>6499</b><br>TDZE <b>341</b><br>Apt Elev <b>342</b> |
|--|------------------------|---|

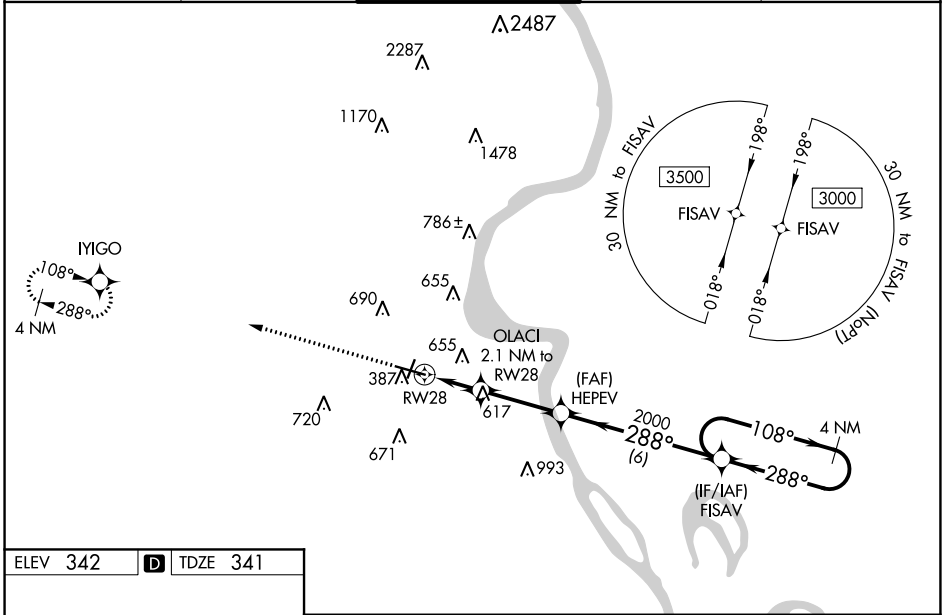
# RNAV (GPS) RWY 28

CAPE GIRARDEAU RGNL (CGI)

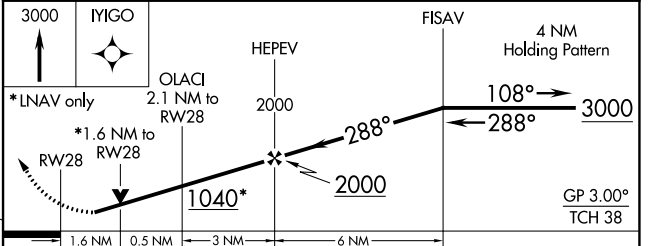
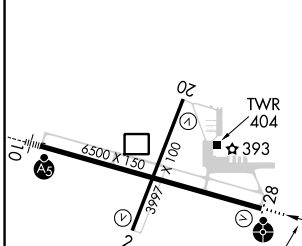
**⚠** DME/DME RNP-0.3 NA. When local altimeter setting not received, use Cairo Rgnl altimeter setting and increase all DA 48 feet and all MDA 60 feet; increase LPV all Cats, LNAV/VNAV all Cats, and Circling Cat C/D visibility ¼ mile and LNAV Cat C/D visibility ½ mile. VDP NA when using Cairo Rgnl altimeter setting. Helicopter visibility reduction below ¾ SM NA. For inop ODALS, increase LPV all Cats, LNAV/VNAV all Cats and LNAV Cat C/D visibilities ½ mile. When using Cairo Rgnl altimeter setting, for inop ODALS, increase LPV all Cats, LNAV/VNAV all Cats and LNAV Cat C/D visibilities ½ mile. Baro-VNAV NA.

ODALS MISSED APPROACH: Climb to 3000 direct IYIGO and hold.

|                       |  |   |                         |                         |
|-----------------------|--|---|-------------------------|-------------------------|
| ASOS<br><b>120.55</b> | MEMPHIS CENTER<br><b>133.65 292.15</b> | CAPE GIRARDEAU TOWER *<br><b>125.525</b> (CTAF) | GND CON<br><b>121.6</b> | UNICOM<br><b>122.95</b> |
|-----------------------|--|---|-------------------------|-------------------------|



|                 |          |                 |
|-----------------|----------|-----------------|
| ELEV <b>342</b> | <b>D</b> | TDZE <b>341</b> |
|-----------------|----------|-----------------|



|                   | A                    | B                    | C                       | D                       |
|-------------------|----------------------|----------------------|-------------------------|-------------------------|
| LPV DA            | 723-1½               |                      | 382 (400-1½)            |                         |
| LNAV/VNAV DA      | 821-1½               |                      | 480 (500-1½)            |                         |
| LNAV MDA          | 880-¾                | 539 (600-¾)          | 880-1¾                  | 539 (600-1¾)            |
| <b>C</b> CIRCLING | 880-1<br>538 (600-1) | 960-1<br>618 (700-1) | 1000-1¾<br>658 (700-1¾) | 1080-2¼<br>738 (800-2¼) |

MIRL Rwy 2-20   
HIRL Rwy 10-28

NC-3, 16 JUL 2020 to 13 AUG 2020

NC-3, 16 JUL 2020 to 13 AUG 2020