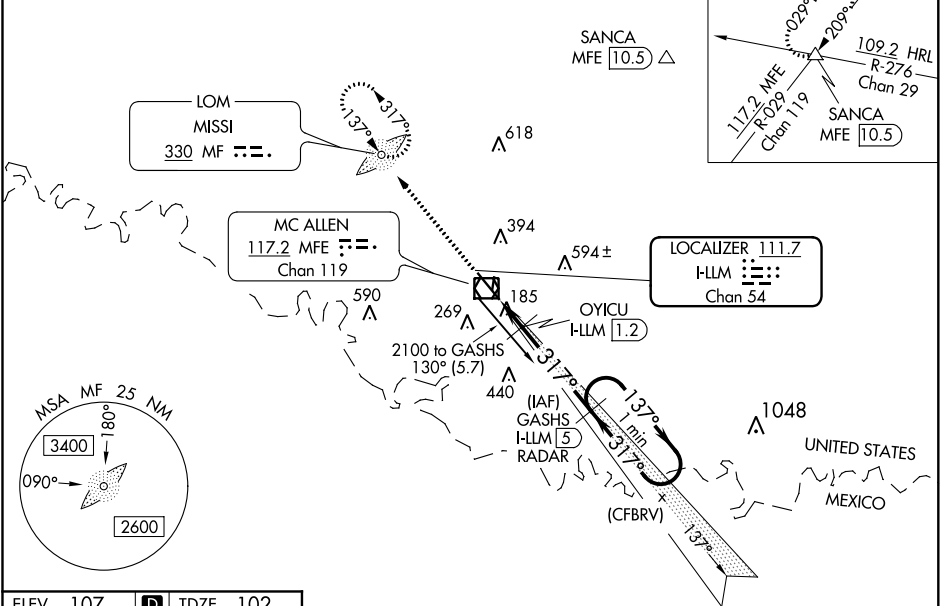


LOC/DME I-LLM <b>111.7</b> Chan <b>54</b>	APP CRS <b>317°</b>	Rwy Idg <b>7120</b> TDZE <b>102</b> Apt Elev <b>107</b>
---	------------------------	---

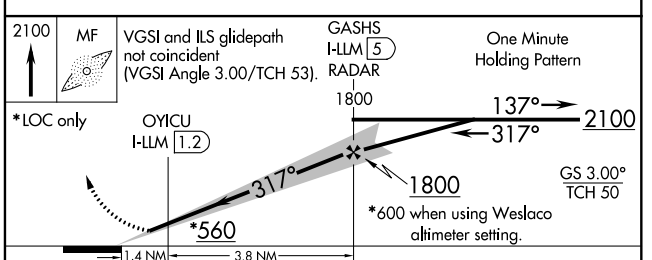
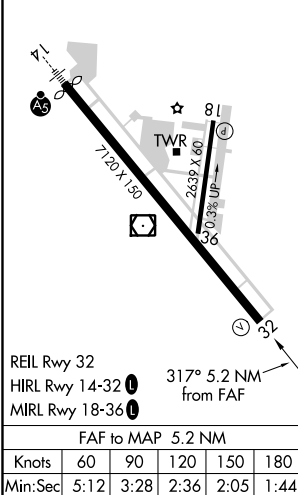
**ILS or LOC RWY 32**  
MC ALLEN MILLER INTL (MF'E)

<p><b>⚠</b> Circling NA northeast of Rwy 14-32. ADF and DME or Radar required. When local altimeter setting not received, use Weslaco altimeter setting: increase all DA 39 feet and MDA 40 feet.</p>		<p>MISSED APPROACH: Climb to 2100 direct MF LOM and hold</p>		
<p>ATIS <b>128.5</b></p>	<p>VALLEY APP CON <b>121.0 377.2</b></p>	<p>MC ALLEN TOWER ★ <b>118.5 (CTAF) 0 256.9</b></p>	<p>GND CON <b>121.8</b></p>	<p>UNICOM <b>122.95</b></p>

**DME or RADAR REQUIRED**



ELEV 107	<b>D</b>	TDZE 102
----------	----------	----------



CATEGORY	A	B	C	D
S-ILS 32	302- <sup>3</sup> / <sub>4</sub>		200 (200- <sup>3</sup> / <sub>4</sub> )	
S-LOC 32	560-1	458 (500-1)	560- <sup>1</sup> / <sub>8</sub>	458 (500- <sup>1</sup> / <sub>8</sub> )
<b>C</b> CIRCLING	580-1	473 (500-1)	580- <sup>1</sup> / <sub>2</sub> 473 (500- <sup>1</sup> / <sub>2</sub> )	800- <sup>2</sup> / <sub>4</sub> 693 (700- <sup>2</sup> / <sub>4</sub> )
OYICU FIX MINIMUMS				
S-LOC 32	440-1		338 (400-1)	
<b>C</b> CIRCLING	580-1	473 (500-1)	580- <sup>1</sup> / <sub>2</sub> 473 (500- <sup>1</sup> / <sub>2</sub> )	800- <sup>2</sup> / <sub>4</sub> 693 (700- <sup>2</sup> / <sub>4</sub> )

SC-3, 16 JUL 2020 to 13 AUG 2020

SC-3, 16 JUL 2020 to 13 AUG 2020