

LOC I-ESF 111.5 Chan 52	APP CRS 270°	Rwy Idg TDZE Apt Elev	5999 92 112
---	------------------------	-----------------------------	--

ILS or LOC/DME RWY 27

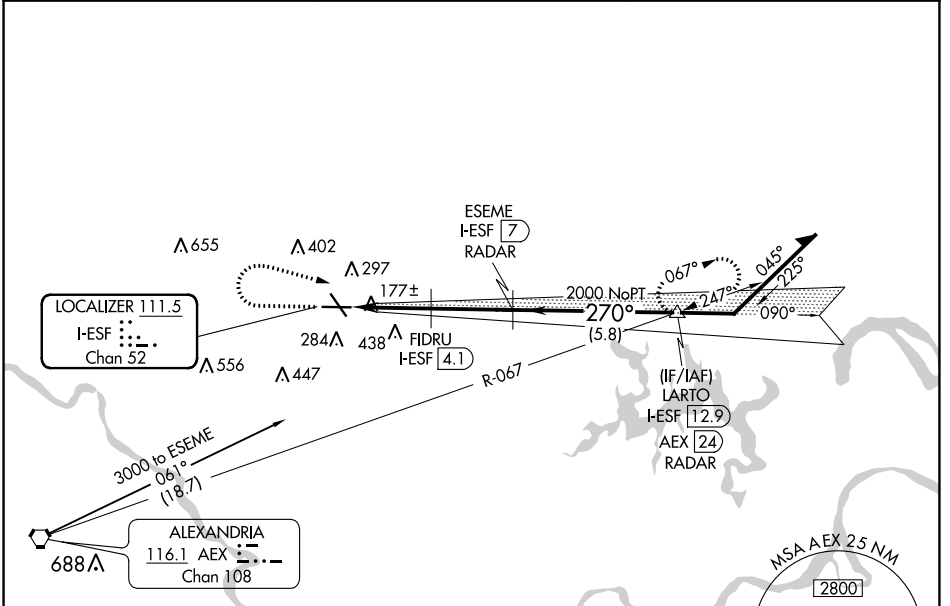
ESLER RGNL (E/SF)

When VGSi inop, Circling Rwy 14-32 NA at night. DME or Radar required. VDP NA with Alexandria Intl altimeter setting. When local altimeter setting not received, use Alexandria Intl altimeter setting and increase all DA 35 feet and all MDA 40 feet. For inoperative MALSR, increase S-LOC 27 Cat C/D visibility to 1½ mile.

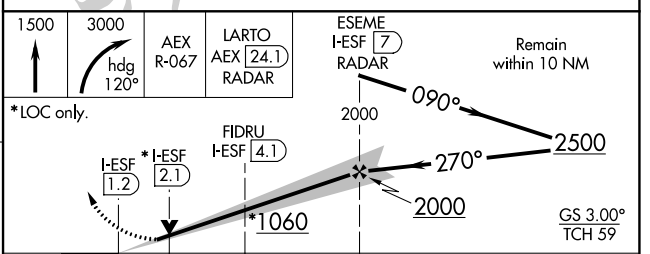
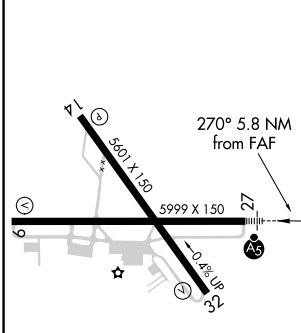
MALSRL
AS

MISSED APPROACH: Climb to 1500 then climbing right turn to 3000 on heading 120° and on AEX VORTAC R-067 to LARTO/AEX 24.1 DME/RADAR and hold.

ESF ASOS 119.425	POLK APP CON 125.4 254.8	UNICOM 122.8 (CTAF) 1
----------------------------	------------------------------------	--



ELEV 112	D	TDZE 92
----------	----------	---------



CATEGORY	A	B	C	D
S-ILS 27	292-½ 200 (200-½)			
S-LOC 27	440-½ 348 (400-½)	440-⅝ 348 (400-⅝)		
CIRCLING	600-1 488 (500-1)	600-1½ 488 (500-1½)	740-2 628 (700-2)	

REIL Rws 9, 14 and 32 **1**
MIRL Rwy 14-32 **1**
HIRL Rwy 9-27 **1**

SC-4, 16 JUL 2020 to 13 AUG 2020

SC-4, 16 JUL 2020 to 13 AUG 2020