

WAAS CH <b>65629</b> <b>W15A</b>	APP CRS <b>152°</b>	Rwy Idg <b>6500</b> TDZE <b>12</b> Apt Elev <b>15</b>
--	------------------------	---

# RNAV (GPS) RWY 15

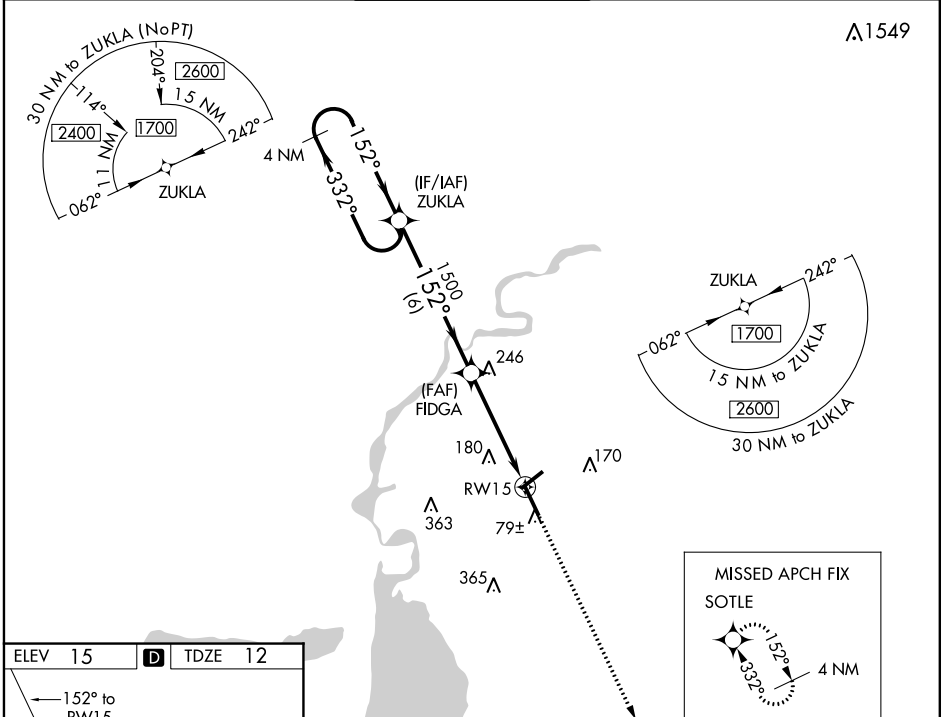
LAKE CHARLES RGNL (LCH)

**ASR** When VGSI inop, Circling Rwy 5 NA at night. For uncompensated Baro-VNAV systems, LNAV/VNAV below -3°C (27°F) or above 43°C (109°F). DME/DME RNP-0.3 NA. For inop MALSR, increase LNAV-VNAV all Cats visibility to ¾ and LNAV Cats C and D to 1½ mile. \*\*RVR 1800 authorized with use of FD or AP or HUD to DA.

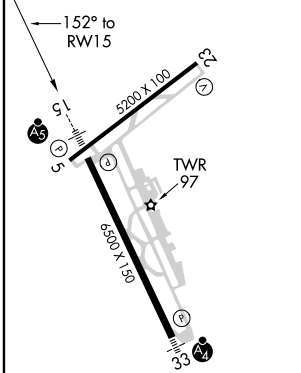


**MISSED APPROACH:**  
Climb to 1900 direct SOTLE and hold.

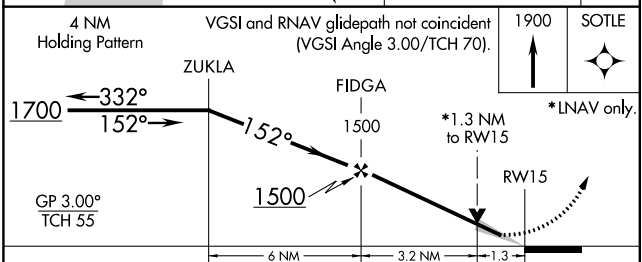
ATIS <b>118.75</b>	LAKE CHARLES APP CON * <b>119.35 353.75</b>	LAKE CHARLES TOWER * <b>120.7</b> (CTAF) <b>257.8</b>	GND CON <b>121.8</b>	CLNC DEL <b>126.25</b>	UNICOM <b>122.95</b>
-----------------------	--	--	-------------------------	---------------------------	-------------------------



ELEV 15	<b>D</b>	TDZE 12
---------	----------	---------



REIL Rws 5 and 23  
MIRL Rwy 5-23 **1**  
HIRL Rwy 15-33 **1**



CATEGORY	A	B	C	D
LPV DA		212/24	200 (200-½)	
LNAV/VNAV DA		301/24	289 (300-½)	
LNAV MDA	500/24	488 (500-½)	500/50	488 (500-1)
CIRCLING	500-1	485 (500-1)	500-1½ 485 (500-1½)	580-2 565 (600-2)

SC-4, 16 JUL 2020 to 13 AUG 2020

SC-4, 16 JUL 2020 to 13 AUG 2020