

LAKE CHARLES, LOUISIANA

AL-5083 (FAA)

19227

WAAS CH 61041 W23A	APP CRS 229°	Rwy Idg TDZE Apt Elev	5200 15 15
--	------------------------	-----------------------------	---------------------------------------

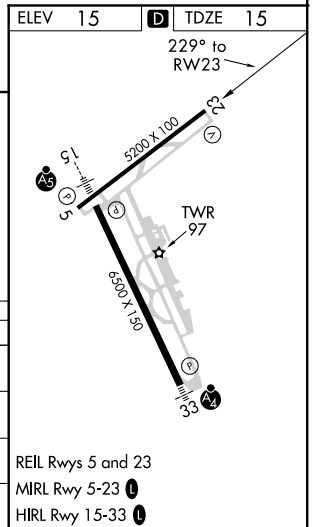
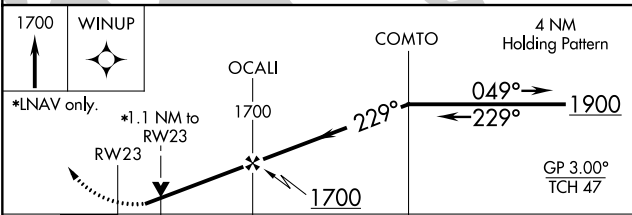
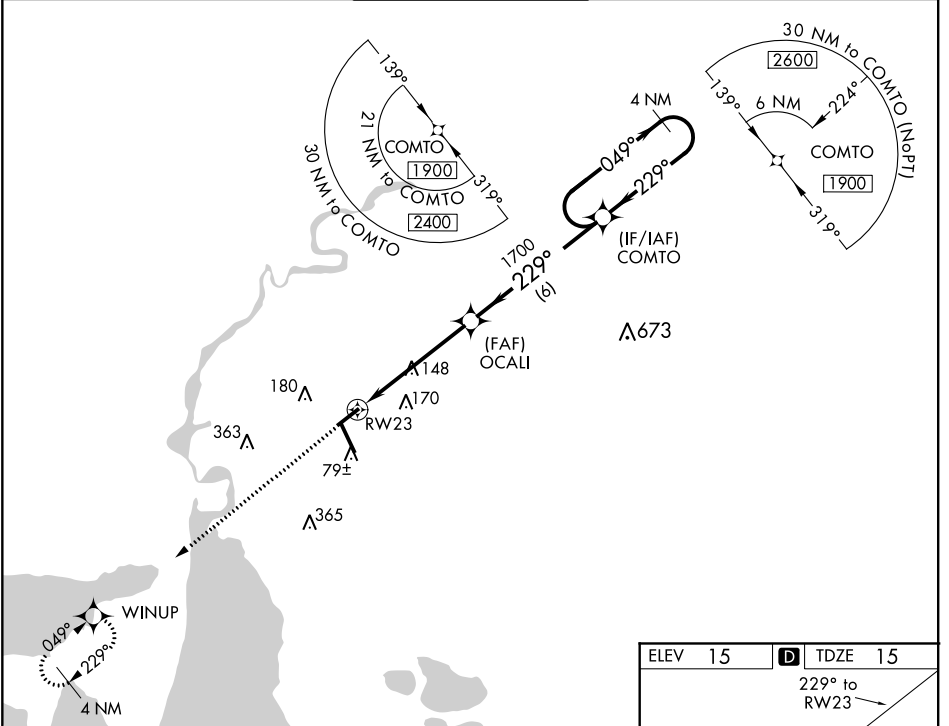
RNAV (GPS) RWY 23

LAKE CHARLES RGNL (LCH)

ASR For uncompensated Baro-VNAV systems, LNAV/VNAV NA below -2°C (29°F) or above 54°C (130°F). Rwy 23 helicopter visibility reduction below ¾ SM NA. DME/DME RNP-0.3 NA.

MISSED APPROACH: Climb to 1700 direct WINUP and hold.

ATIS 118.75	LAKE CHARLES APP CON * 119.35 353.75	LAKE CHARLES TOWER * 120.7 (CTAF) 257.8	GND CON 121.8	CLNC DEL 126.25	UNICOM 122.95
-----------------------	--	---	-------------------------	---------------------------	-------------------------



CATEGORY	A	B	C	D
LPV DA		265-¾	250 (300-¾)	
LNAV/VNAV DA		301-⅞	286 (300-⅞)	
LNAV MDA	400-1	385 (400-1)	400-1½	385 (400-1½)
CIRCLING	440-1 425 (500-1)	480-1 465 (500-1)	580-1½ 565 (600-1½)	680-2 665 (700-2)

REIL Rwy 5 and 23
MIRL Rwy 5-23
HIRL Rwy 15-33

LAKE CHARLES, LOUISIANA
Amdt 1 07DEC17

30°08'N-93°13'W

LAKE CHARLES RGNL (LCH) RNAV (GPS) RWY 23

SC-4, 16 JUL 2020 to 13 AUG 2020

SC-4, 16 JUL 2020 to 13 AUG 2020