

WAAS CH 56215 W33A	APP CRS 332°	Rwy Idg TDZE Apt Elev	6500 11 15
--	------------------------	-----------------------------	---------------------------------------

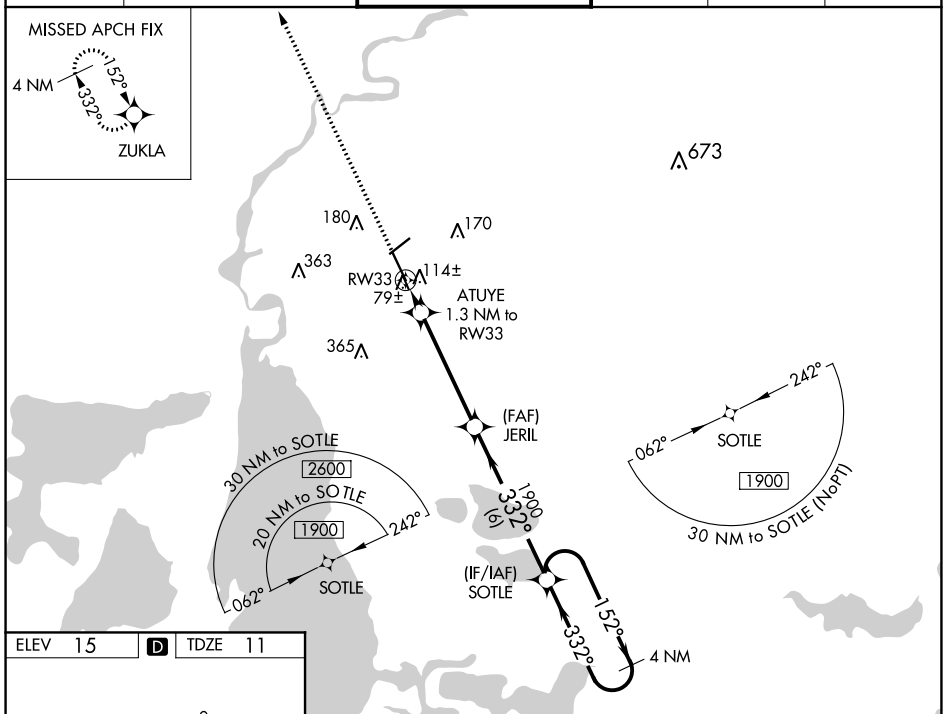
RNAV (GPS) RWY 33

LAKE CHARLES RGNL (LCH)

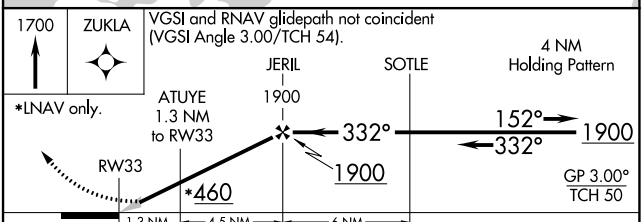
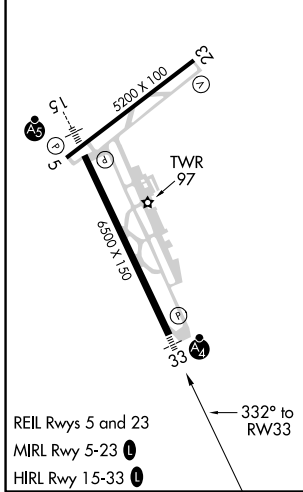
ASR When VGSI inop, Circling Rwy 5 NA at night. For uncompensated Baro-VNAV systems, LNAV/VNAV NA below -3°C (27°F) or above 43°C (109°F). DME/DME RNP-0.3 NA. For inop MALSF, increase LNAV/VNAV all Cats visibility to ¾ and LNAV all Cats visibility to 1 mile.

MALSF **MISSED APPROACH:** Climb to 1700 direct ZUKLA and hold.

ATIS 118.75	LAKE CHARLES APP CON* 119.35 353.75	LAKE CHARLES TOWER* 120.7 (CTAF) 257.8	GND CON 121.8	CLNC DEL 126.25	UNICOM 122.95
-----------------------	---	--	-------------------------	---------------------------	-------------------------



ELEV 15	D	TDZE 11
---------	----------	---------



CATEGORY	A	B	C	D
LPV DA		211-¾	200 (200-¾)	
LNAV/VNAV DA		296-¾	285 (300-¾)	
LNAV MDA		380-¾	369 (400-¾)	
CIRCLING	440-1 425 (500-1)	480-1 465 (500-1)	480-1½ 465 (500-1½)	580-2 565 (600-2)

SC-4, 16 JUL 2020 to 13 AUG 2020

SC-4, 16 JUL 2020 to 13 AUG 2020