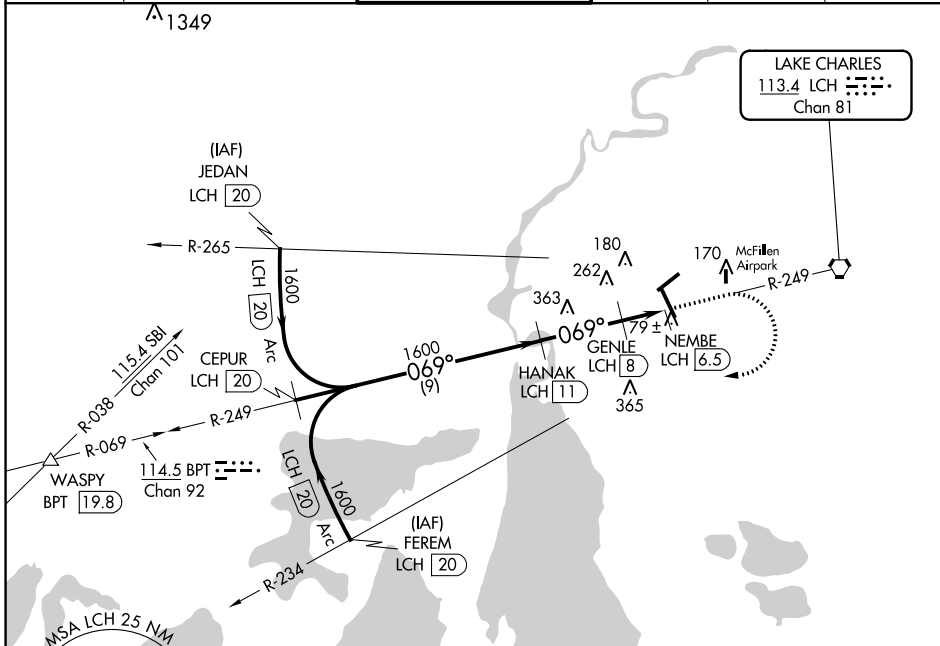


VORTAC LCH 113.4 Chan 81	APP CRS 069°	Rwy Idg TDZE Apt Elev	N/A N/A 15
---------------------------------------	------------------------	-----------------------------	---------------------------------------

VOR/DME-B
LAKE CHARLES RGNL (LCH)

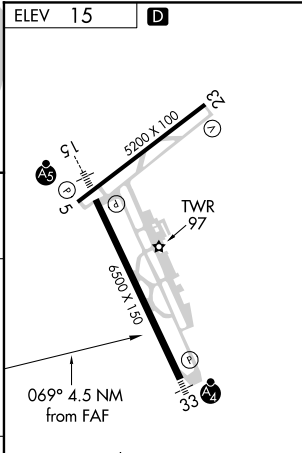
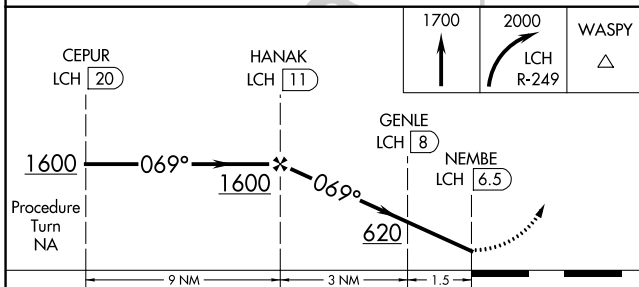
NA ASR	MISSED APPROACH: Climb to 1700, then climbing right turn to 2000 via LCH R-249 to WASPY INT.				
-----------	--	--	--	--	--

ATIS 118.75	LAKE CHARLES APP CON* 119.35 353.75	LAKE CHARLES TOWER* 120.7 (CTAF) 257.8	GND CON 121.8	CLNC DEL 126.25	UNICOM 122.95
-----------------------	---	---	-------------------------	---------------------------	-------------------------



SC-4, 16 JUL 2020 to 13 AUG 2020

SC-4, 16 JUL 2020 to 13 AUG 2020



CATEGORY	A	B	C	D
CIRCLING	500-1	485 (500-1)	500-1½ 485 (500-1½)	580-2 565 (600-2)

REIL Rwys 5 and 23
MRL Rwy 5-23
HIRL Rwy 15-33