

LOC/DME I-ESC <b>109.3</b> Chan 30	APP CRS <b>094°</b>	Rwy ldg TDZE Apt Elev	<b>6498</b> <b>609</b> <b>609</b>
------------------------------------------	------------------------	-----------------------------	-----------------------------------------

# ILS or LOC RWY 9

DELTA COUNTY (ESC)

**ADF or DME required.** Night landing: Rwy 19 NA. When local altimeter setting not received, use Marquette altimeter setting and increase all DA 178 feet and all MDA 180 feet, increase S-ILS 9 all Cats visibility 1/8 mile, S-LOC 9 Cats C/D visibility 1/2 mile, Circling Cats C visibility 1/2 mile and Circling Cat D visibility 1/4 mile. For inoperative MALSRL when using Marquette altimeter setting, increase S-ILS 9 all Cats visibility to 1 mile, and S-LOC 9 Cats C/D visibility to 2 miles.

MALSRL

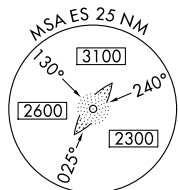


**MISSED APPROACH:** Climb to 2100 then climbing right turn to 2500 direct ESC VOR/DME and hold.

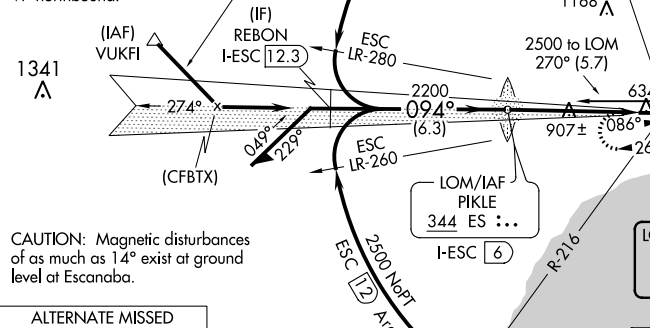
AWOS-3PT  
**121.425**

MINNEAPOLIS CENTER  
**127.65**

UNICOM  
**122.8 (CTAF)**



Procedure NA for arrivals at VUKFI on V7 northbound.



## ADF or DME REQUIRED

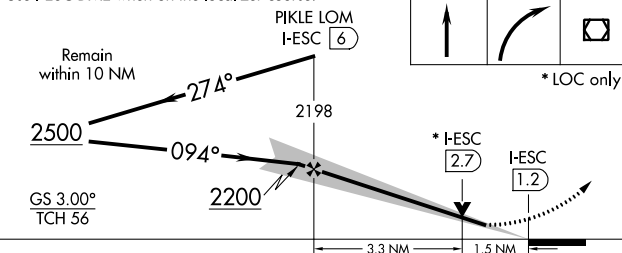
ESCANABA  
**110.8 ESC** : : : :  
Chan 45

LOCALIZER **109.3**  
I-ESC : : : :  
Chan 30

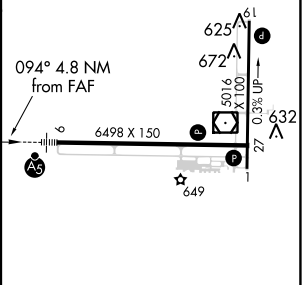
CAUTION: Magnetic disturbances of as much as 14° exist at ground level at Escanaba.



Use I-ESC DME when on the localizer.



ELEV 609 **D** TDZE 609



CATEGORY	A	B	C	D
S-ILS 9		809-1/2	200 (200-1/2)	
S-LOC 9	1160-1/2	551 (600-1/2)	1160-1 1/8	551 (600-1 1/8)
CIRCLING	1160-1	551 (600-1)	1280-2 671 (700-2)	1480-2 3/4 871 (900-2 3/4)

HIRL Rwy 9-27	
MIRL Rwy 1-19	
REIL Rws 1 and 27	
FAF to MAP 4.8 NM	
Knots	60 90 120 150 180
Min:Sec	4:48 3:12 2:24 1:55 1:36

EC-1, 16 JUL 2020 to 13 AUG 2020

EC-1, 16 JUL 2020 to 13 AUG 2020