

LOC/DME I-ESC 109.3 Chan 30	APP CRS 274°	Rwy Idg TDZE Apt Elev	6498 596 609
--	------------------------	-----------------------------	---

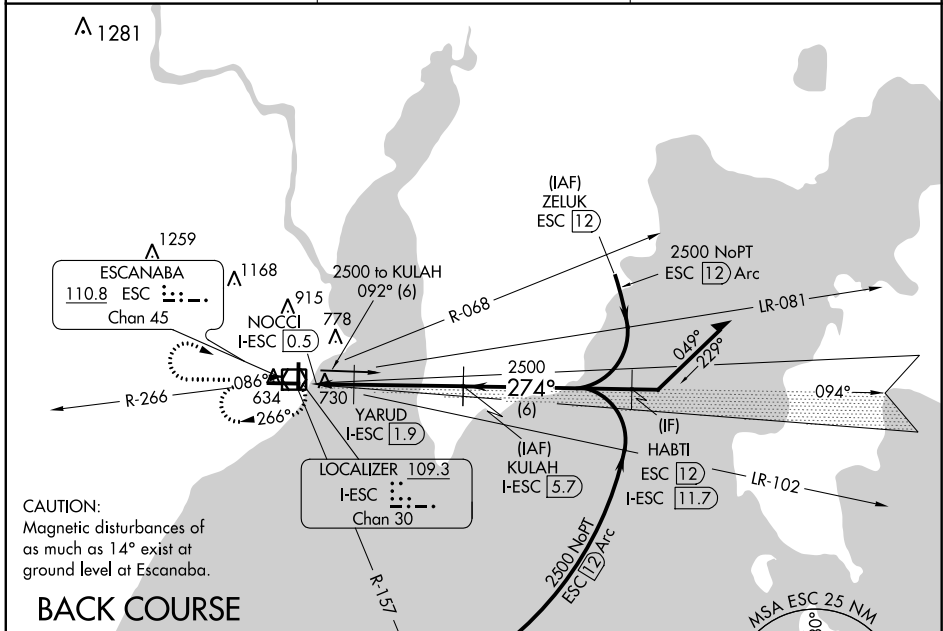
LOC/DME BC RWY 27

DELTA COUNTY (ESC)

⚠ Rwy 27 Straight-In and Circling and Circling to Rwy 19 NA at night. Helicopter visibility reduction below 1 SM NA. When local altimeter setting not received, use Marquette altimeter setting and increase all MDA 180 feet and S-27 Cat C and D visibility $\frac{3}{8}$ mile and Circling Cat C visibility $\frac{1}{2}$ mile and Cat D visibility $\frac{1}{4}$ mile.

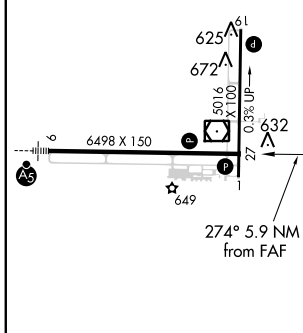
⚠ MISSED APPROACH: Climb to 2500 then right turn direct ESC VOR/DME and hold.

AWOS-3PT 121.425	MINNEAPOLIS CENTER 127.65	UNICOM 122.8 (CTAF) 0
----------------------------	-------------------------------------	---------------------------------



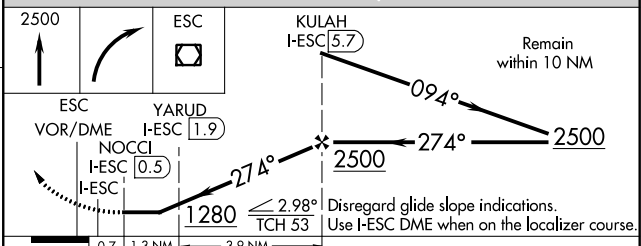
BACK COURSE

ELEV 609	D	TDZE 596
----------	----------	----------



HIRL Rwy 9-27 **0**
MIRL Rwy 1-19 **0**
REIL Rws 1 and 27 **0**

DME REQUIRED



CATEGORY	A	B	C	D
S-27	1040-1	444 (500-1)	1040-1 $\frac{3}{8}$	444 (500-1 $\frac{3}{8}$)
C CIRCLING	1060-1 451 (500-1)	1080-1 471 (500-1)	1280-2 671 (700-2)	1480-2 $\frac{3}{4}$ 871 (900-2 $\frac{3}{4}$)

EC-1, 16 JUL 2020 to 13 AUG 2020

EC-1, 16 JUL 2020 to 13 AUG 2020