

# RNAV (GPS) RWY 9

DELTA COUNTY (ESC)

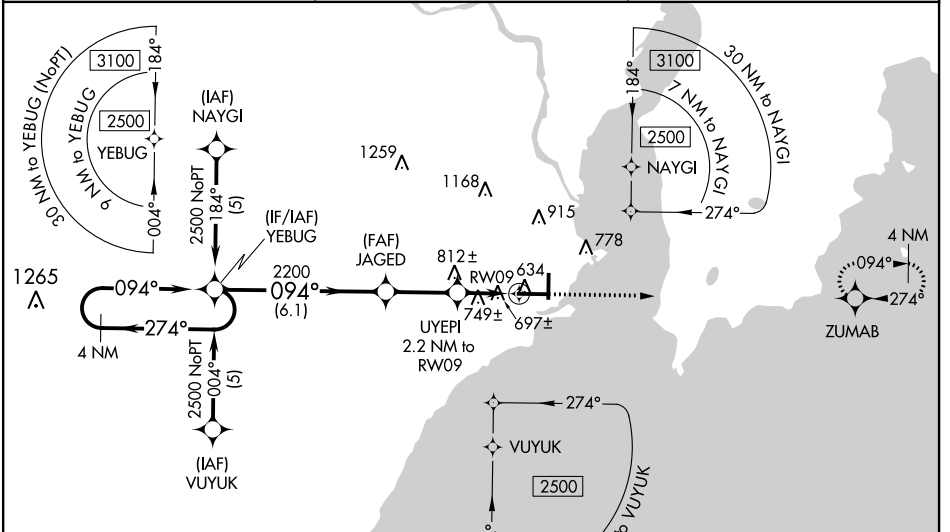
WAAS CH <b>70511</b> <b>W09A</b>	APP CRS <b>094°</b>	Rwy Idg TDZE Apt Elev	<b>6498</b> <b>609</b> <b>609</b>
--	------------------------	-----------------------------	---

**⚠** For uncompensated Baro-VNAV systems, LNAV/VNAV NA below -16°C (4°F) or above 54°C (130°F). DME/DME RNP-0.3 NA. When local altimeter setting not received, use Marquette altimeter setting and increase all DA 178 feet and all MDA 180 feet and increase LPV all Cats visibility 1/8 mile, LNAV/VNAV all Cats visibility 3/8 mile, LNAV Cat C and D visibility 5/8 mile, and Circling Cat C visibility 1/2 mile, Cat D visibility 1/4 mile. For inoperative MALS, increase LNAV/VNAV all Cats visibility to 1 mile. For inoperative MALS, when using Marquette altimeter setting, increase LPV all Cats visibility to 1 mile, LNAV Cat C and D visibility to 1 3/8 mile. VDP NA when using Marquette altimeter setting. Baro-VNAV NA when using Marquette altimeter setting. Circling to Rwy 19 NA at night.

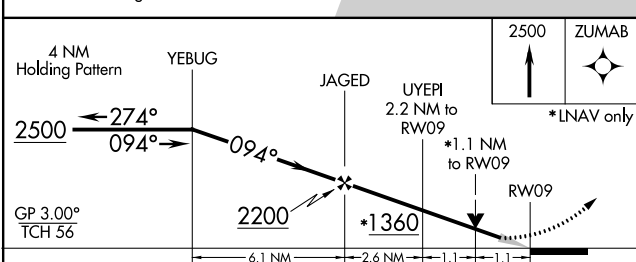
MALS  
AS

MISSED APPROACH:  
Climb to 2500 direct ZUMAB and hold.

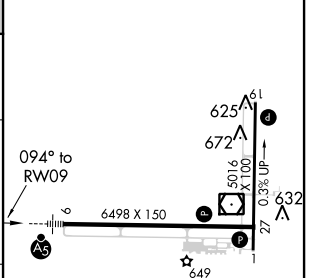
AWOS-3PT <b>121.425</b>	MINNEAPOLIS CENTER <b>127.65</b>	UNICOM <b>122.8 (CTAF)</b>
----------------------------	-------------------------------------	-------------------------------



CAUTION: Magnetic disturbances of as much as 14° exist at ground level at Escanaba.



ELEV 609	TDZE 609
----------	----------



CATEGORY	A	B	C	D
LPV DA		809-1/2	200 (200-1/2)	
LNAV/VNAV DA		967-5/8	358 (400-5/8)	
LNAV MDA	1000-1/2	391 (400-1/2)	1000-5/8	391 (400-5/8)
CIRCLING	1060-1 451 (500-1)	1080-1 471 (500-1)	1280-2 671 (700-2)	1480-2 3/4 871 (900-2 3/4)

HIRL Rwy 9-27  
MIRL Rwy 1-19  
REIL Rws 1 and 27

EC-1, 16 JUL 2020 to 13 AUG 2020

EC-1, 16 JUL 2020 to 13 AUG 2020