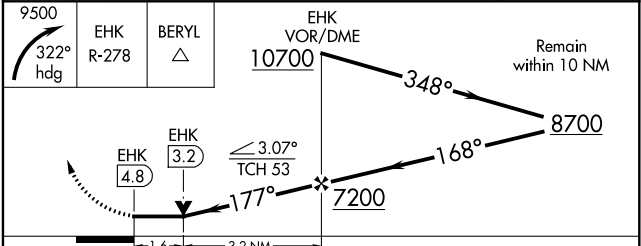
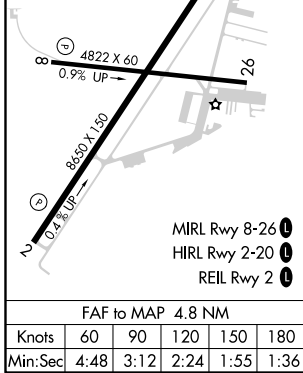
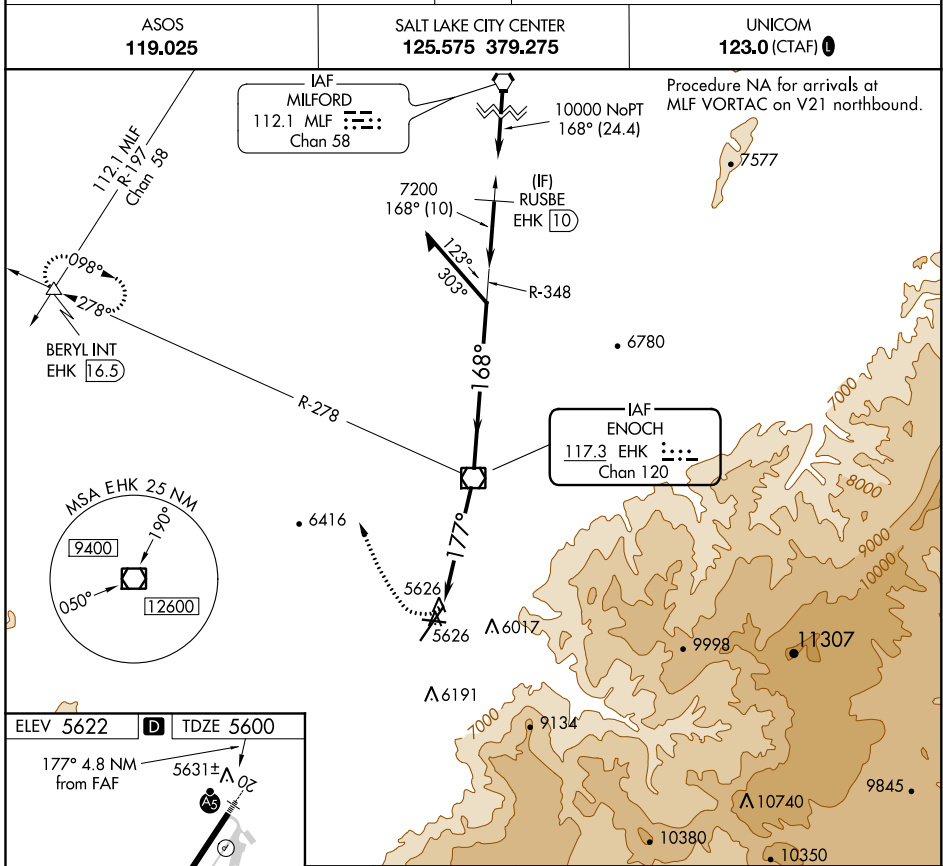


VOR/DME EHK 117.3 Chan 120	APP CRS 177°	Rwy Idg TDZE Apt Elev	8650 5600 5622
-----------------------------------------	------------------------	-----------------------------	-------------------------------------------

VOR RWY 20

CEDAR CITY RGNL(CDC)

<p>▼ Inoperative table does not apply. Circling NA southeast of Rwy 2-20.</p>	<p>MALSR</p>	<p>MISSED APPROACH: Climbing right turn to 9500 on heading 322° and EHK VOR/DME R-278 to BERYL INT/EHK 16.5 DME and hold.</p>



CATEGORY	A	B	C	D
S-20	6160-1 560 (600-1)		6160-1½ 560 (600-1½)	
☑ CIRCLING	6160-1 538 (600-1)		6160-1½ 538 (600-1½)	6180-2 558 (600-2)

SW-4, 16 JUL 2020 to 13 AUG 2020

SW-4, 16 JUL 2020 to 13 AUG 2020