

LOC/DME I-GFK <b>109.1</b> Chan <b>28</b>	APP CRS <b>174°</b>	Rwy Idg TDZE Apt Elev	<b>7351</b> <b>843</b> <b>845</b>
---	------------------------	-----------------------------	---

# LOC BC RWY 17R

GRAND FORKS INTL (GFK)

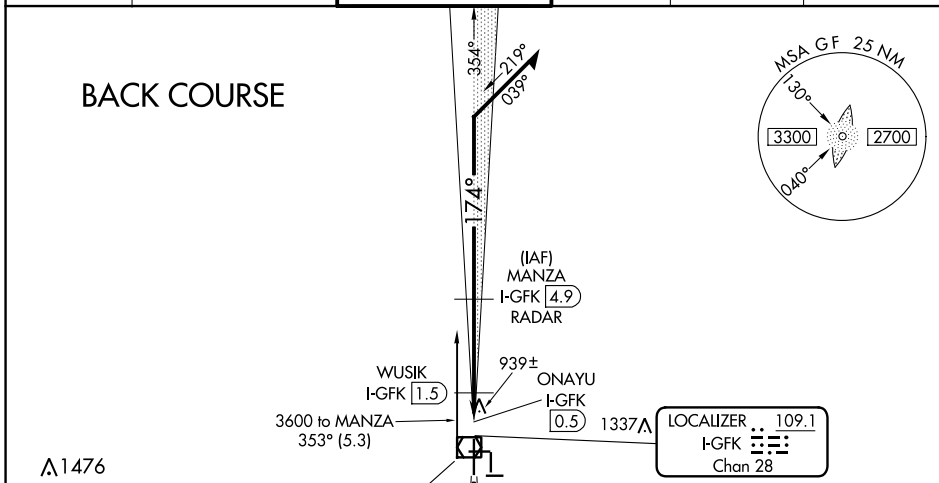
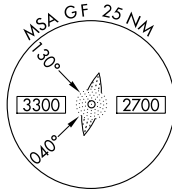
DME or ADF or RADAR required.

▼ When local altimeter setting not received, use Crookston altimeter setting and increase all MDA 80 feet; increase S-17R Cat C visibility  $\frac{1}{4}$  SM and Circling Cat C visibility  $\frac{1}{4}$  SM.  
▲ Increase WUSIK fix minimums S-17R Cat C visibility and Circling Cat C visibility  $\frac{1}{4}$  SM.

MISSED APPROACH: Climb to 2600 on I-GFK south course (174°) to HISER LOM/I-GFK 6.9 DME/RADAR and hold.

ATIS <b>119.4</b>	GRAND FORKS APP CON * <b>118.1 318.1</b>	GRAND FORKS TOWER * <b>118.4 (CTAF) 350.35</b>	GND CON <b>124.575</b>	CLNC DEL <b>135.725</b>	UNICOM <b>122.95</b>
----------------------	---	---	---------------------------	----------------------------	-------------------------

## BACK COURSE



▲ 1476

GRAND FORKS  
114.3 GFK  
Chan 90

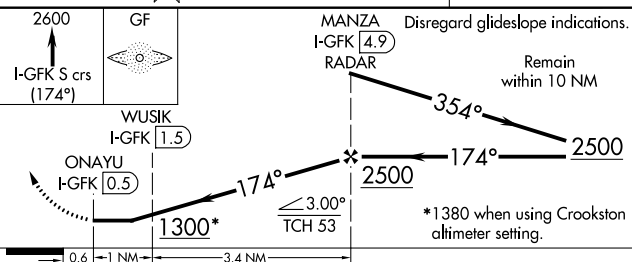
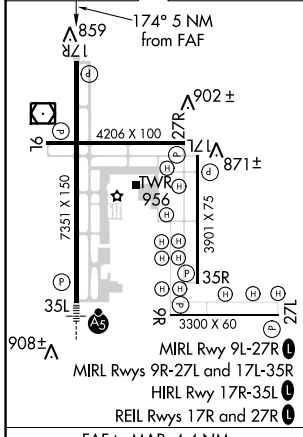
LOCALIZER  
I-GFK 109.1  
Chan 28

MISSED APCH FIX  
HISER  
I-GFK 6.9  
RADAR  
GF 345

Procedure NA for arrival on GFK  
VOR/DME airway radials 354 CW 038.

LOM  
HISER  
345 GF  
I-GFK 6.9/RADAR

ELEV <b>845</b>	TDZE <b>843</b>
-----------------	-----------------



CATEGORY	A	B	C	D
S-17R	1300-1	457 (500-1)	1300-1 $\frac{3}{8}$ 457 (500-1 $\frac{3}{8}$ )	1300-1 $\frac{1}{2}$ 457 (500-1 $\frac{1}{2}$ )
CIRCLING	1300-1	455 (500-1)	1400-1 $\frac{1}{2}$ 555 (600-1 $\frac{1}{2}$ )	1400-2 555 (600-2)
WUSIK FIX MINIMUMS				
S-17R	1200-1 357 (400-1)			1200-1 $\frac{1}{4}$ 357 (400-1 $\frac{1}{4}$ )
CIRCLING	1260-1 415 (500-1)	1300-1 455 (500-1)	1400-1 $\frac{1}{2}$ 555 (500-1 $\frac{1}{2}$ )	1400-2 555 (600-2)

NC-1, 16 JUL 2020 to 13 AUG 2020

NC-1, 16 JUL 2020 to 13 AUG 2020