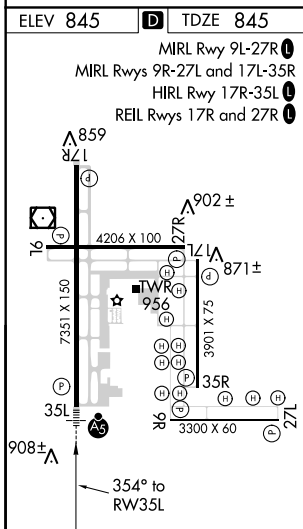
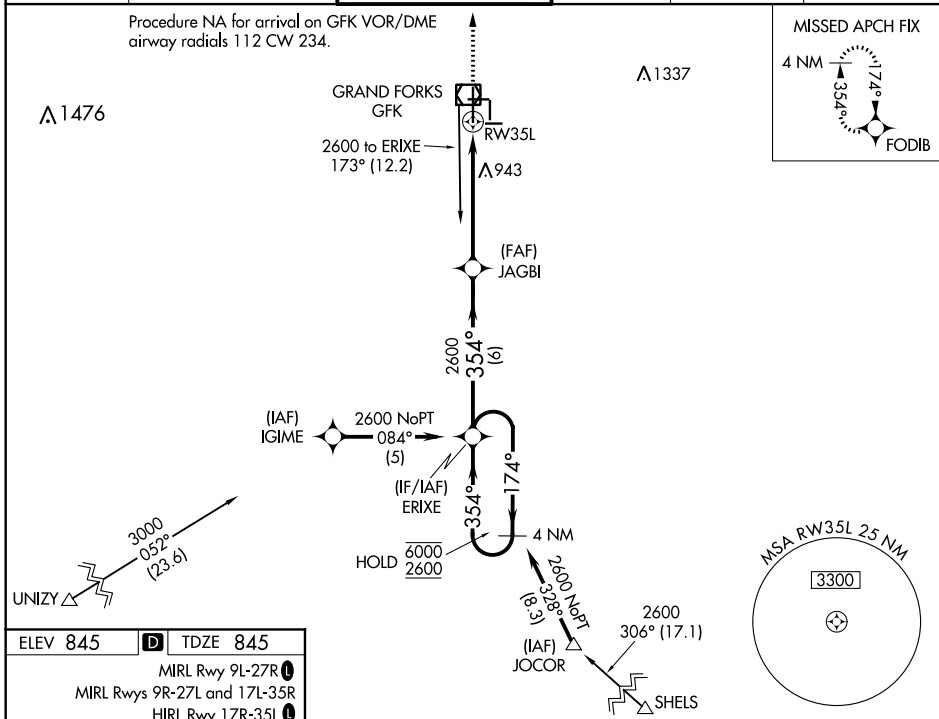


WAAS CH <b>70313</b> <b>W35A</b>	APP CRS <b>354°</b>	Rwy Idg TDZE Apt Elev	<b>7351</b> <b>845</b> <b>845</b>
--	------------------------	-----------------------------	---

# RNAV (GPS) RWY 35L

GRAND FORKS INTL (GFK)

RNP APCH. ▼ For uncompensated Baro-VNAV systems, LNAV/VNAV NA below -1.6°C or above 54°C. For Inop ALS, increase LNAV/VNAV Cat D visibility to RVR 5000 and LNAV Cat C/D visibility to RVR 5500.		MALSR 	MISSED APPROACH: Climb to 2600 direct FODIB and hold.		
ATIS <b>119.4</b>	GRAND FORKS APP CON ★ <b>118.1 318.1</b>	GRAND FORKS TOWER★ <b>118.4(CTAF) 350.35</b>	GND CON <b>124.575</b>	CLNC DEL <b>135.725</b>	UNICOM <b>122.95</b>



VGSI and RNAV glidepath not coincident (VGSI Angle 2.76/TCH 61).

4 NM Holding Pattern	ERIXE	JAGBI	2600	FODIB
6000 ← 174°	← 354° →	← 354° →	← 2600 →	
GP 3.00°				
TCH 55				
	6 NM	4.3 NM	1 NM	
CATEGORY	A	B	C	D
LPV DA	1095/24 250 (300-½)			
LNAV/VNAV DA	1174/26 329 (400-½)			1174/40 329 (400-¾)
LNAV MDA	1200/24	355 (400-½)	1200/30 355 (400-¾)	1200/50 355 (400-1)
CIRCLING	1280-1 435 (500-1)	1300-1 455 (500-1)	1400-1½ 555 (600-1½)	1400-2 555 (600-2)

NC-1, 16 JUL 2020 to 13 AUG 2020

NC-1, 16 JUL 2020 to 13 AUG 2020