

WAAS CH <b>58104</b> <b>W09A</b>	APP CRS <b>084°</b>	Rwy Idg TDZE Apt Elev	<b>4206</b> <b>843</b> <b>845</b>
--	------------------------	-----------------------------	---

# RNAV (GPS) RWY 9L

GRAND FORKS INTL (GFK)

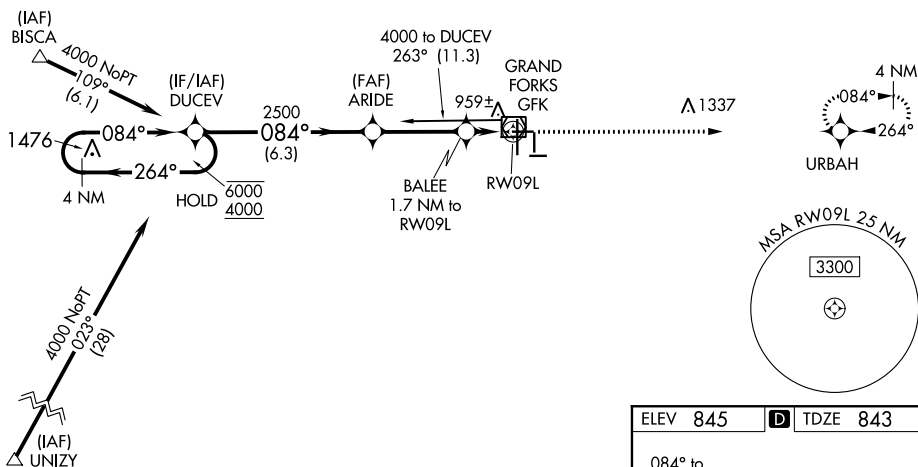
RNP APCH.

▼ Baro-VNAV and VDP NA when using Crookston altimeter setting.  
 ▲ For uncompensated Baro-VNAV systems, LNAV/VNAV NA below -16°C or above 54°C. When local altimeter setting not received, use Crookston altimeter setting and increase all DA 62 feet and all MDA 80 feet, increase LNAV Cat C visibility  $\frac{3}{8}$  SM, Cat D visibility  $\frac{1}{8}$  SM and Circling Cat C  $\frac{1}{4}$  SM.

MISSED APPROACH: Climb to 2800 direct URBAH and hold.

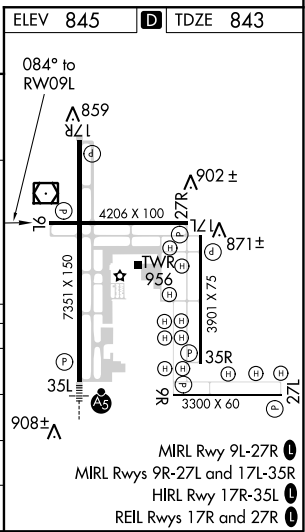
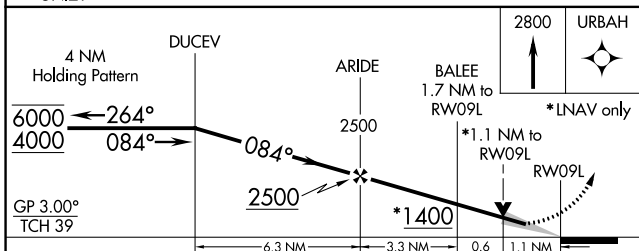
ATIS <b>119.4</b>	GRAND FORKS APP CON * <b>118.1 318.1</b>	GRAND FORKS TOWER * <b>118.4 (CTAF) 0 350.35</b>	GND CON <b>124.575</b>	CLNC DEL <b>135.725</b>	UNICOM <b>122.95</b>
----------------------	---	---	---------------------------	----------------------------	-------------------------

Procedure NA for arrivals at GFK VOR/DME on V55 northeast bound.



NC-1, 16 JUL 2020 to 13 AUG 2020

NC-1, 16 JUL 2020 to 13 AUG 2020



CATEGORY	A	B	C	D
LPV DA	1093-1 250 (300-1)			
LNAV/VNAV DA	1238-1½ 395 (400-1½)			
LNAV MDA	1220-1 377 (400-1)			1220-1¼ 377 (400-1¼)
CIRCLING	1260-1 415 (500-1)	1300-1 455 (500-1)	1400-1½ 555 (600-1½)	1400-2 555 (600-2)

MIRL Rwy 9L-27R  
 MIRL Rwys 9R-27L and 17L-35R  
 HIRL Rwy 17R-35L  
 REIL Rwys 17R and 27R