

LOC I-CKF <b>108.9</b>	APP CRS <b>104°</b>	Rwy Idg <b>5001</b> TDZE <b>308</b> Apt Elev <b>310</b>
---------------------------	------------------------	---

**LOC RWY 10**  
CRISP COUNTY-CORDELE (CKF)

**▽** Rwy 10 helicopter visibility reduction below 1 SM NA.  
**▲ NA** ADF required. Circling Rwy 28 NA at night. When local altimeter setting not received, use Albany altimeter setting and increase all MDA 100 feet and increase S-10 Cat C/D visibility 1/8 SM and Circling Cat C/D visibility 1/4 SM. Inop table does not apply to S-10. Inop table does not apply to S-10 Cat A/B when using Albany altimeter setting. For inop ALS, when using Albany altimeter setting increase S-10 Cat C/D visibility to 1 1/8 SM.

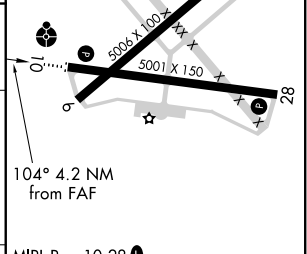
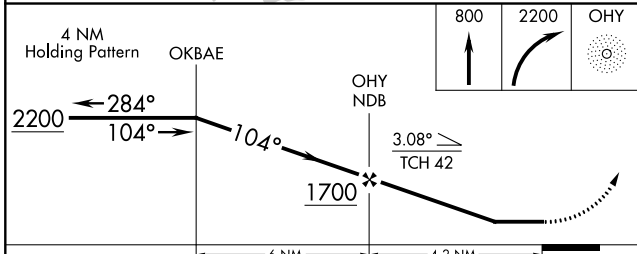
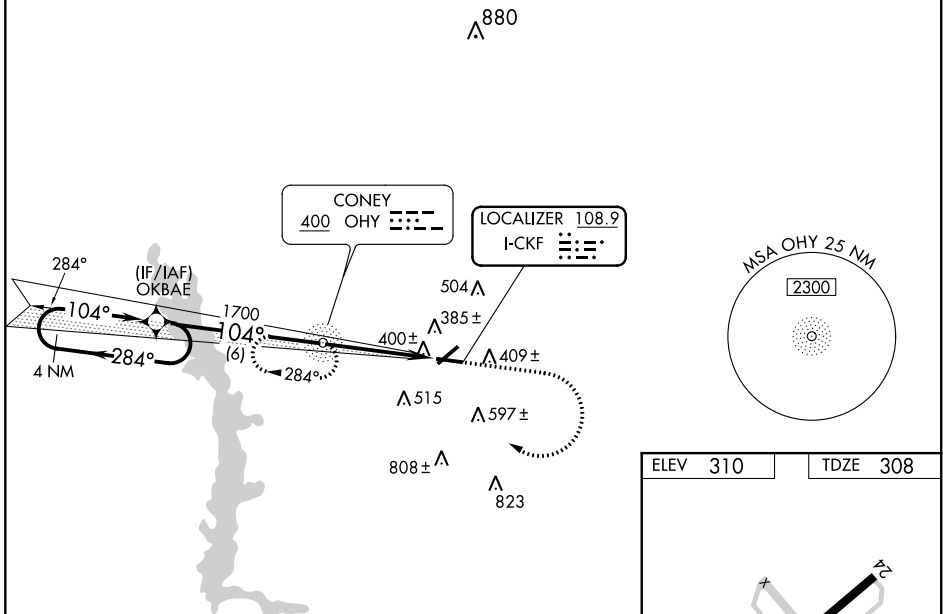
**ODALS**  
 **MISSED APPROACH:** Climb to 800 then climbing right turn to 2200 direct OHY NDB and hold, continue climb-in-hold to 2200.

AWOS-3PT  
**119.325**

JACKSONVILLE CENTER  
**125.75 226.8**

UNICOM  
**123.050 (CTAF)**

**RNAV 1-GPS or RADAR REQUIRED**



CATEGORY	A	B	C	D
S-10		660-1	352 (400-1)	
<b>C</b> CIRCLING	760-1 450 (500-1)	820-1 510 (600-1)	1080-2 1/4 770 (800-2 1/4)	1160-2 3/4 850 (900-2 3/4)

MRL Rwy 10-28	
REIL Rwys 10 and 28	
FAF to MAP 4.2 NM	
Knots	60 90 120 150 180
Min:Sec	4:12 2:48 2:06 1:41 1:24

SE-4, 16 JUL 2020 to 13 AUG 2020

SE-4, 16 JUL 2020 to 13 AUG 2020