

WAAS CH 57905 W10A	APP CRS 103°	Rwy Idg 5001 TDZE 308 Apt Elev 310
--	------------------------	---

RNAV (GPS) RWY 10

CRISP COUNTY-CORDELE (CKF)

▽ For uncompensated Baro-VNAV systems, LNAV/VNAV NA below -15°C (5°F) or above 54°C (130°F). Baro-VNAV and VDP NA when using Albany altimeter setting. Rwy 10 helicopter visibility reduction below 3/4 SM NA. DME/DME RNP-0.3 NA. Circling Rwy 28 NA at night. When local altimeter setting not received, use Albany altimeter setting: increase LPV DA to 708 feet and LNAV/VNAV DA to 822 feet and all MDA 100 feet; increase LPV all Cats visibility 1/2 SM; LNAV/VNAV all Cats visibility 1/2 SM, and increase LNAV Cat C/D and Circling Cat C/D visibility 1/4 SM. Inop table does not apply to LPV and LNAV all Cats. For inop ALS, increase LNAV/VNAV Cat A/B visibility to 1 1/2 SM. For inop ALS, when using Albany altimeter setting: increase LPV Cat A/B visibility to 1 1/2 SM; LNAV/VNAV Cat A/B visibility to 1 1/4 SM. Inop table does not apply to LNAV Cat A/B when using Albany altimeter setting.



MISSED APPROACH:
Climb to 2100 direct
HIDBI and hold.

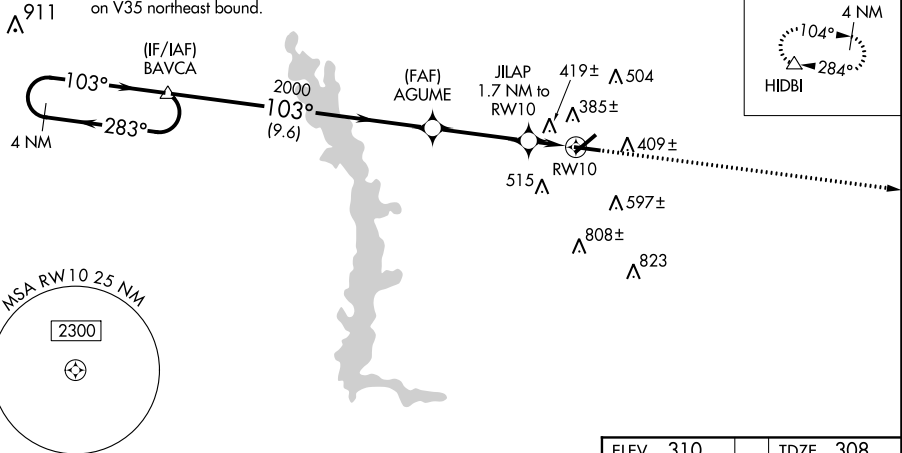
AWOS-3PT
119.325

JACKSONVILLE CENTER
125.75 226.8

UNICOM
123.050 (CTAF)

NoPT for arrival at BAVCA
on V35 northeast bound.

MISSED APCH FIX

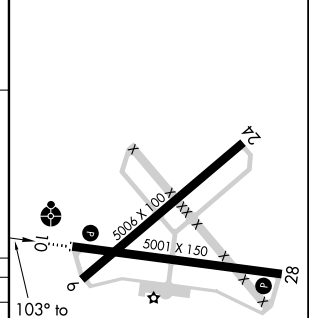
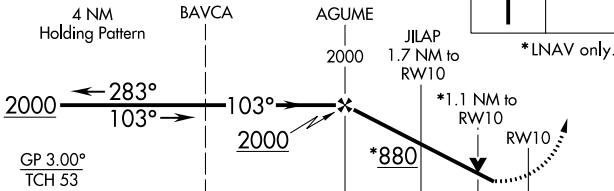
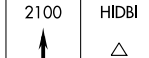


SE-4, 16 JUL 2020 to 13 AUG 2020

SE-4, 16 JUL 2020 to 13 AUG 2020

ELEV 310	TDZE 308
----------	----------

VGSI and RNAV glidepath not coincident
(VGSI Angle 3.00/TCH 42).



CATEGORY	A	B	C	D
LPV DA		612-1	304 (400-1)	
LNAV/ VNAV DA		726-1 1/4	418 (300-1 1/4)	
LNAV MDA		680-1	372 (400-1)	
C CIRCLING	760-1 450 (500-1)	820-1 510 (600-1)	1080-2 1/4 770 (800-2 1/4)	1160-2 3/4 850 (900-2 3/4)

MIRL Rwy 10-28
REIL Rwy 10 and 28