

WAAS CH 99305 W28A	APP CRS 284°	Rwy Idg 5001 TDZE 309 Apt Elev 310
--	------------------------	---

RNAV (GPS) RWY 28

CRISP COUNTY-CORDELE (CKF)

⚠ Baro-VNAV NA when using Albany altimeter setting. For uncompensated Baro-VNAV systems, LNAV/VNAV NA below -15°C (5° F) or above 54°C (130°F). Rwy 28 helicopter visibility reduction below 1 SM NA. DME/DME RNP-0.3 NA. Straight-in and Circling Rwy 28 NA at night. When local altimeter setting not received, use Albany altimeter setting: increase LPV DA to 765 feet; LNAV/VNAV DA to 865 feet and increase all MDA 100 feet, increase LPV and LNAV/VNAV all Cats visibility 3/8 SM; increase LNAV and Circling Cats C and D visibility 1/4 SM.

MISSED APPROACH:
Climb to 2000 direct BAVCA and hold.

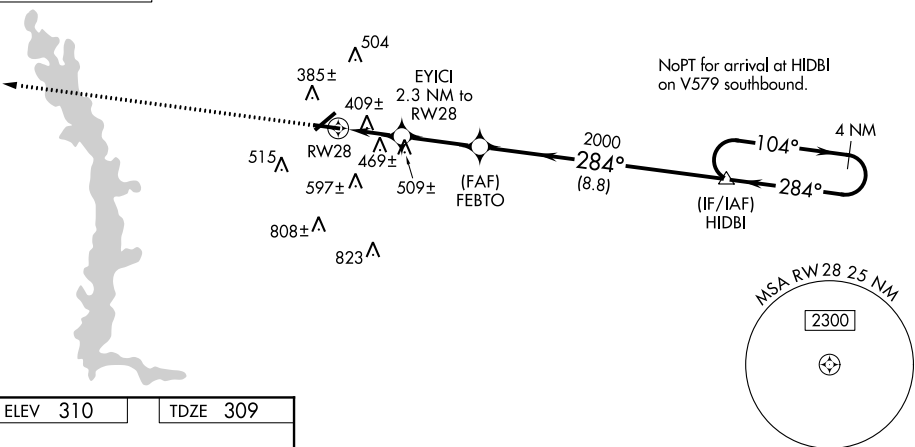
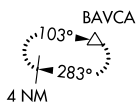
AWOS-3PT
119.325

JACKSONVILLE CENTER
125.75 226.8

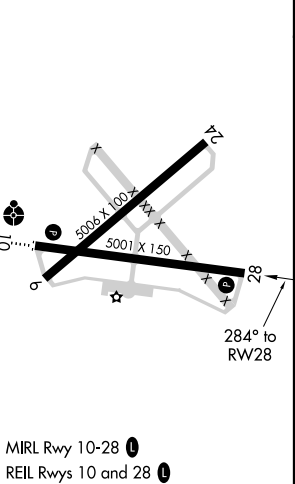
UNICOM
123.050 (CTAF) ①

△ 833±

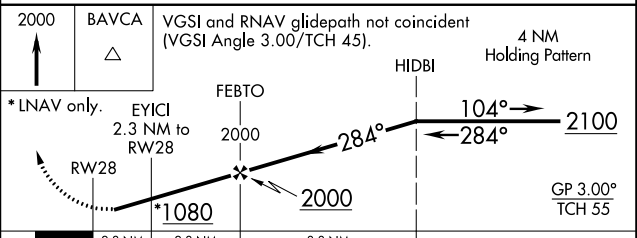
MISSED APCH FIX



ELEV 310	TDZE 309
----------	----------



MIRL Rwy 10-28 ①
REIL Rwys 10 and 28 ①



CATEGORY	A	B	C	D
LPV DA		669-1/8	360 (400-1/8)	
LNAV/VNAV DA		769-1/2	460 (500-1/2)	
LNAV MDA	720-1	411 (500-1)	720-1/8	411 (500-1/8)
C CIRCLING	760-1 450 (500-1)	820-1 510 (600-1)	1080-2/4 770 (800-2/4)	1160-2/4 850 (900-2/4)