

WAAS CH 40106 W06A	APP CRS 056°	Rwy Idg 5006 TDZE 310 Apt Elev 310
--	------------------------	---

RNAV (GPS) RWY 6

CRISP COUNTY-CORDELE (CKF)

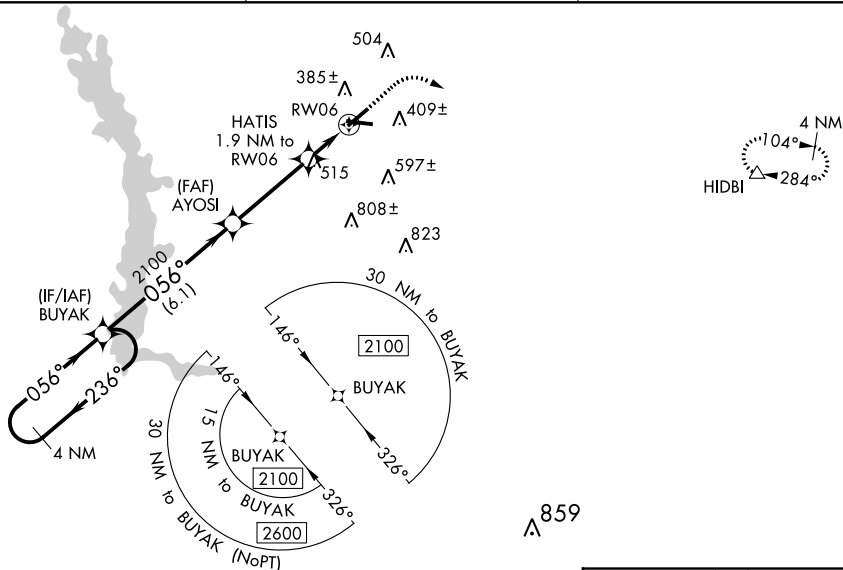
▼ For uncompensated Baro-VNAV systems, LNAV/VNAV NA below -15°C (5°F) or above 54°C (130°F). Baro-VNAV and VDP NA when using Albany altimeter setting.
▲ Rwy 6 helicopter visibility reduction below ¾ SM NA. DME/DME RNP-0.3 NA.
 Straight-in Rwy 6 NA at night, Circling Rwy 6, 24, 28 NA at night. When local altimeter setting not received, use Albany altimeter setting and increase all DA to 669 feet and all MDA 100 feet; increase LPV and LNAV/VNAV all Cats visibility ½ SM and LNAV and Circling Cat C/D visibility ¼ SM.

MISSED APPROACH:
 Climb to 800 then climbing right turn to 2100 direct HDBI and hold.

AWOS-3PT
119.325

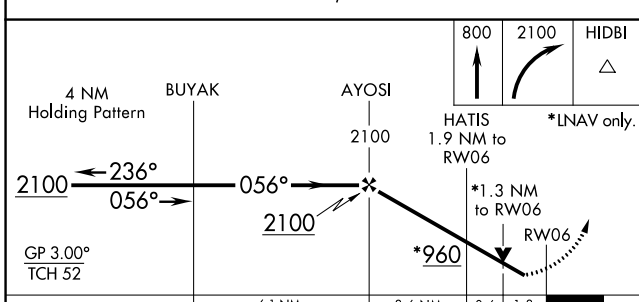
JACKSONVILLE CENTER
125.75 226.8

UNICOM
123.050 (CTAF) 0



SE-4, 16 JUL 2020 to 13 AUG 2020

SE-4, 16 JUL 2020 to 13 AUG 2020



ELEV 310	TDZE 310
----------	----------

CATEGORY	A	B	C	D
LPV DA	573-1		263 (300-1)	
LNAV/ VNAV DA	572-1		262 (300-1)	
LNAV MDA	780-1	470 (500-1)	780-1 3/8	470 (500-1 3/8)
C CIRCLING	780-1 470 (500-1)	820-1 510 (600-1)	1080-2 1/4 770 (800-2 1/4)	1160-2 3/4 850 (900-2 3/4)

