

RNAV (GPS) RWY 28

PRINCETON (39N)

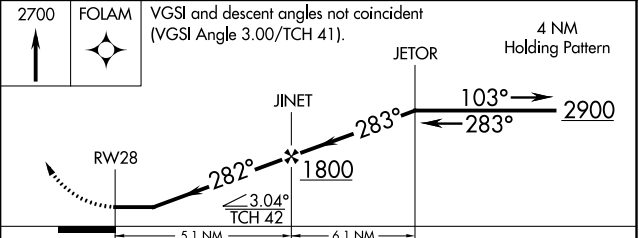
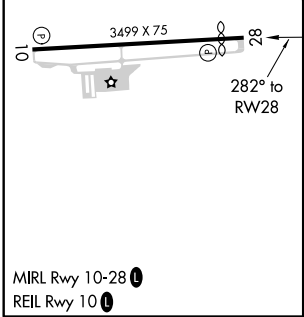
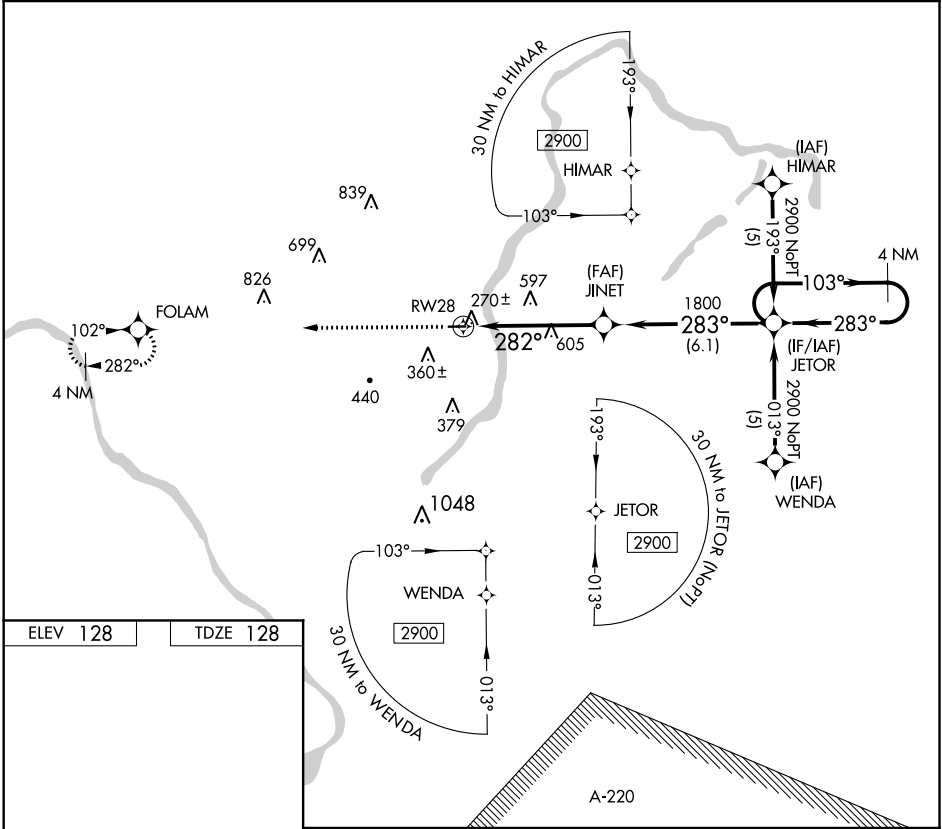
APP CRS 282°	Rwy Idg TDZE Apt Elev	3130 128 128
------------------------	-----------------------------	---

RNP APCH.

▼ Use Trenton Mercer altimeter setting, if not received use Somerset altimeter setting. Procedure NA at night. Rwy 28 helicopter visibility reduction below 1 SM NA.

▲NA MISSED APPROACH: Climb to 2700 direct FOLAM and hold.

TTN ASOS 126.775	NEW YORK APP CON 132.8 379.9	UNICOM 122.725 (CTAF)	123.05 0
----------------------------	--	---------------------------------	------------------------



CATEGORY	A	B	C	D
RNAV MDA	900-1	900-1¼	900-2¼	NA
RNAV MDA	772 (800-1)	772 (800-1¼)	772 (800-2¼)	

NE-2, 16 JUL 2020 to 13 AUG 2020

NE-2, 16 JUL 2020 to 13 AUG 2020