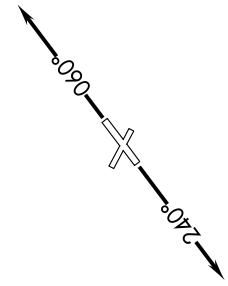
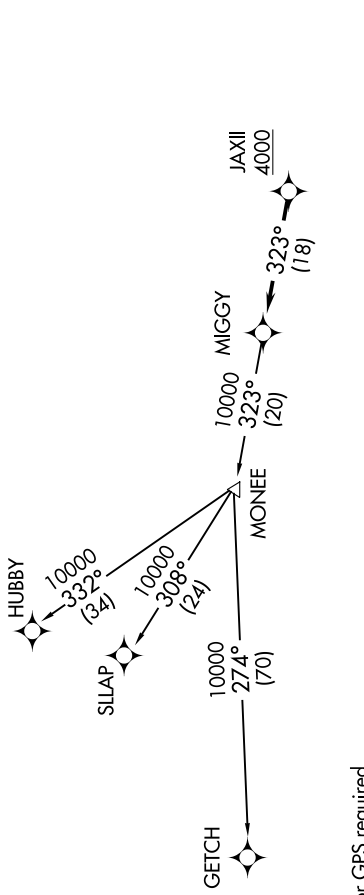
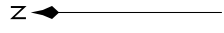


EC-1, 16 JUL 2020 to 13 AUG 2020

ATIS
 134.55
 CLNC DEL
 121.6
 GND CON
 121.6
 ANN ARBOR TOWER *
 120.3 (CTAF)
 DETROIT DEP CON
 118.95 284.0



TAKEOFF MINIMUMS:
 Rwys 6, 24: Standard.
 Rwys 12, 30: NA-Environmental.

NOTE: Chart not to scale.

**TOP ALTITUDE:
ASSIGNED BY ATC**

- NOTE: RNAV 1.
- NOTE: RADAR required.
- NOTE: DME/DME/IRU or GPS required.
- NOTE: Turbojet departures at/above 10000, maintain 280K until advised by ATC.
- NOTE: GETCH TRANSITION: For use by KMKE area arrivals only, or as assigned by ATC.

DEPARTURE ROUTE DESCRIPTION

TAKEOFF RUNWAY 6: Climb on heading 060° or as assigned for RADAR vectors to cross JAXII at or above 4000, thence...
TAKEOFF RUNWAY 24: Climb on heading 240° or as assigned for RADAR vectors to cross JAXII at or above 4000, thence...
 ...on track 323° to MIGGY, then on (transition). Maintain ATC assigned altitude, expect filed altitude 10 minutes after departure.

- GETCH TRANSITION (MIGGY2.GETCH):
- HUBBY TRANSITION (MIGGY2.HUBBY):
- SLLAP TRANSITION (MIGGY2.SLLAP):

EC-1, 16 JUL 2020 to 13 AUG 2020