

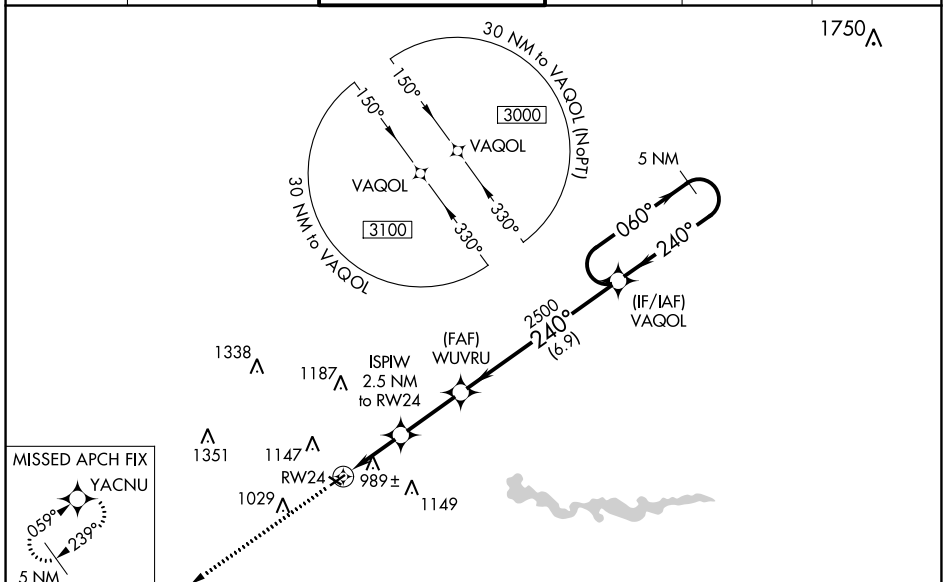
WAAS CH <b>61120</b> <b>W24A</b>	APP CRS <b>240°</b>	Rwy Idg TDZE Apf Elev	<b>3505</b> <b>831</b> <b>839</b>
--	------------------------	-----------------------------	---

# RNAV (GPS) RWY 24

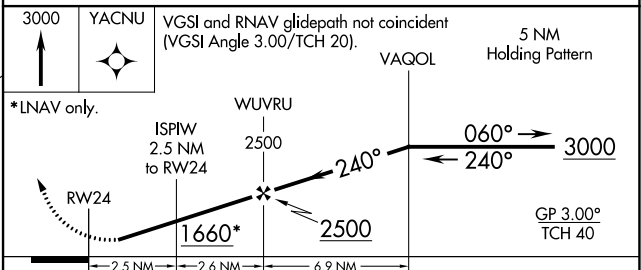
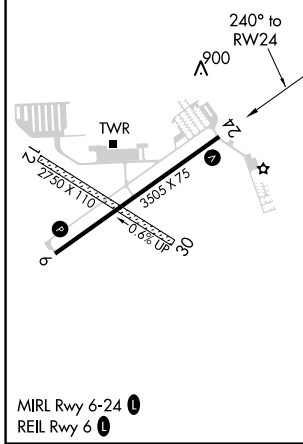
ANN ARBOR MUNI (A.R.B)

RNP APCH.	<p>▼ For uncompensated Baro-VNAV systems, LNAV/VNAV NA below -16°C or above 38°C. Baro-VNAV NA when using Willow Run altimeter setting. Rwy 24 helicopter visibility reduction below ¾ SM NA. When local altimeter setting not received, use Willow Run altimeter setting and increase all DA/MDA 40 feet.</p>	MISSED APPROACH: Climb to 3000 direct YACNU and hold.
-----------	--	---

ATIS <b>134.55</b>	DETROIT APP CON <b>118.95 284.0</b>	ANN ARBOR TOWER * <b>120.3 (CTAF)</b>	GND CON <b>121.6</b>	CLNC DEL <b>121.6</b>	UNICOM <b>123.0</b>
-----------------------	--	--	-------------------------	--------------------------	------------------------



ELEV 839	TDZE 831
----------	----------



CATEGORY	A	B	C	D
LPV DA	1081-1		250 (300-1)	
LNAV/VNAV DA	1155-1		324 (400-1)	
LNAV MDA	1300-1 469 (500-1)		1300-1¼ 469 (500-1¼)	

EC-1, 16 JUL 2020 to 13 AUG 2020

EC-1, 16 JUL 2020 to 13 AUG 2020