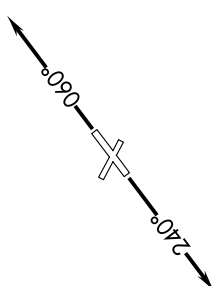
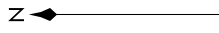


EC-1, 16 JUL 2020 to 13 AUG 2020

**TOP ALTITUDE:  
ASSIGNED BY ATC**

ATIS  
134.55  
CLNC DEL  
121.6  
GND CON  
121.6  
ANN ARBOR TOWER ★  
120.3 (CTAF)  
DETROIT DEP CON  
118.95 284.0



**TAKEOFF MINIMUMS:**  
Rwys 6, 24: Standard.  
Rwys 12, 30: NA-Environmental.

NOTE: Chart not to scale.

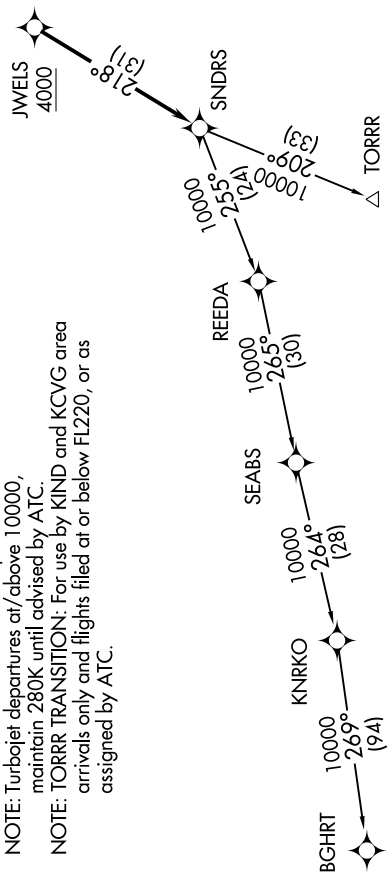
**DEPARTURE ROUTE DESCRIPTION**

**TAKEOFF RUNWAY 6:** Climb on heading 060° or as assigned for RADAR vectors to cross JWELS at or above 4000, thence....  
**TAKEOFF RUNWAY 24:** Climb on heading 240° or as assigned for RADAR vectors to cross JWELS at or above 4000, thence....

....on track 218° to SNDRS, then on (transition). Maintain ATC assigned altitude, expect filed altitude 10 minutes after departure.

BGHR TRANSITION (SNDRS2.BGHR):  
TORR TRANSITION (SNDRS2.TORR):

NOTE: RNAV 1.  
NOTE: RADAR required.  
NOTE: DME/DME/IRU or GPS required.  
NOTE: Turbojet departures at/above 10000, maintain 280K until advised by ATC.  
NOTE: TORR TRANSITION: For use by KIND and KCVG area arrivals only and flights filed at or below FL220, or as assigned by ATC.



EC-1, 16 JUL 2020 to 13 AUG 2020